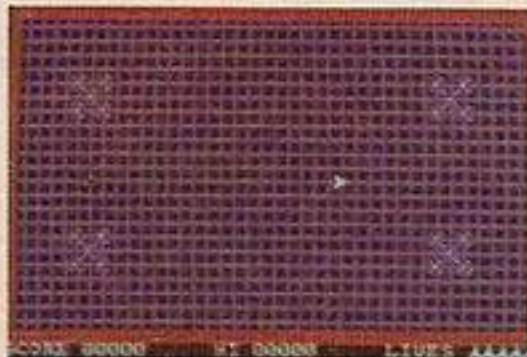


**S. Cartwright
with a fast-
moving arcade-type
game for the Amstrad**



End Zone is a machine code arcade-type game for Amstrad computers. At the start of each round your arrow head craft appears in the middle of the grid. Pressing one of the direction keys starts the craft moving in the chosen direction until you hit the perimeter of the grid, you change direction or get zapped!

Steer craft over spores.

Points are scored for steering your craft over the pattern of

UDG's. Oops! Sorry; dormant nasty space spores! While avoiding the deadly plasma bolts of the patrolling guardians. When all the spores are collected you will enter a new grid with a different pattern. There are 10 different grids to attempt. Playing keys are shown at the beginning of each game.

To enter the program type in the Basic loader. Then save it in case of mistakes. Run the program and if the Ready appears type New. Don't worry, the code is still in memory.

Enter as line 1:

1 MEMORY 34999:LOAD

"EZcode": CALL 35000

Then as a direct command:

SAVE "ENDZONE": SAVE

"EZCODE",B,35000,4875.

Program with auto run

This will save the program to auto run. To load the game type RUN "ENDZONE" or RUN"" (CTRL and small Enter keys).

If you cannot be bothered to type in the program I will supply the game on cassette for £2.00. Send to S. Cartwright, 21 Maelog Place, Gabalfa, Cardiff.

Listing 1.

```

1 REM ***** AMSTRAD END ZONE COPY
  RIGHT 1985 S.CARTWRIGHT ***** 2
10 MEMORY 34999:FOR N=35000 TO 39875:
  READ D$:POKE N,VA I ("&"+D$):NEXT N
20 REM TO SAVE THE PROGRAM ONCE THE
21 DATA HAS BEEN POKED TYPE NEW
22 THEN ENTER THEN TYPE:-
23 IMEMORY 34999:LOAD"EZCODE":
  CALL 35000
24 THEN ENTER THEN TYPE
25 SAVE"ENDZONE":SAVE "EZCODE",
  B,35000,4875
100 DATA 11,20,0,21,10,A4,CD,AB,BB
110 DATA 6,16,3E,A5,21,DB,88,C5,E5,F5
120 DATA CD,A8,BB,F1,3C,E1,11,8,0,19
130 DATA C1,10,F0,C3,8B,89,18,18,3C,3C
140 DATA 7E,7E,E7,C3,C3,E7,7E,7E,3C,3C
150 DATA 18,18,3,F,3E,FC,FC,3E,F,3
160 DATA C0,F0,7C,3F,3F,7C,F0,C0,C3,81
170 DATA 24,18,18,24,81,C3,0,0,0,18
180 DATA 18,0,0,0,18,24,42,42,24
190 DATA 18,0,3C,42,81,81,81,42,3C
200 DATA 3C,18,A5,C3,C3,A5,18,3C,FF,C3
210 DATA A5,99,99,A5,C3,FF,18,66,42,99
220 DATA 99,42,66,18,E3,A1,27,18,18,E4
230 DATA 85,C7,7E,BD,DF,FF,FF,DB,BD,7E
240 DATA 18,3C,66,C3,C3,66,3C,18,5A,99
250 DATA 24,C3,C3,24,99,5A,83,CE,58,64
260 DATA 26,1A,E3,C1,24,5A,81,42,42,81
270 DATA 5A,24,0,0,0,1,3,6,C
280 DATA C,6,3,1,0,0,0,0,30,60
290 DATA C0,80,0,0,0,0,0,0,0
300 DATA 80,C0,60,30,24,5A,89,46,62,91
310 DATA 5A,24,21,0,0,22,65,95,21,0
320 DATA 0,22,5D,95,3E,5,32,67,95,3E
330 DATA 1,32,96,95,3E,1,21,7A,94,CD
340 DATA BC,BC,3E,2,21,87,94,CD,BC,BC
350 DATA 3E,3,21,94,94,CD,BC,BC,3E,4
360 DATA 21,A1,94,CD,BC,BC,3E,3,21,A5
370 DATA 94,CD,BF,BC,CD,DF,89,CD,37,92
380 DATA CD,DF,89,3A,67,95,FE,0,28,B8
390 DATA CD,DF,89,C3,E,8A,3E,1,CD,E
400 DATA BC,3E,0,1,0,0,CD,32,BC,3E
410 DATA 1,6,6,E,6,CD,32,BC,3E,2
420 DATA 6,0,E,0,CD,32,BC,1,0,0
430 DATA CD,38,BC,3E,3,6,1A,E,1A,CD
440 DATA 32,BC,C9,3E,1,32,6F,95,32,77
450 DATA 95,32,4C,99,3E,12,32,6E,95,32
460 DATA 76,95,3E,5,32,71,95,32,79,95
470 DATA 3E,1,32,70,95,32,78,95,3E,28
480 DATA 32,73,95,32,78,95,3E,5,32,72
490 DATA 95,32,7A,95,3E,22,32,75,95,32
500 DATA 7D,95,3E,18,32,74,95,32,7C,95
510 DATA 3E,AA,32,7E,95,3E,AB,32,83,95
520 DATA AF,32,84,95,32,85,95,32,92,95
530 DATA 32,93,95,32,94,95,32,95,95,3E
540 DATA D,32,86,95,32,88,95,3E,15,32
550 DATA 87,95,32,89,95,3E,2,CD,90,BB
560 DATA 26,2,2E,2,E5,CD,75,BB,3E,9F
570 DATA CD,5D,BB,E1,24,3E,28,BC,20,F0
580 DATA 26,2,2C,3E,18,BD,20,E8,3E,1
590 DATA CD,90,BB,6,14,C5,2E,1,60,CD
600 DATA 75,BB,3E,8F,CD,5D,BB,C1,C5,2E
610 DATA 18,60,CD,75,BB,3E,8F,CD,5D,BB
620 DATA C1,C5,2E,18,3E,29,90,67,CD,75
630 DATA BB,3E,8F,CD,5D,BB,C1,C5,2E,1
640 DATA 3E,29,90,67,CD,75,BB,3E,8F,CD
650 DATA 5D,BB,C1,10,C4,6,C,C5,26,1
660 DATA 3E,D,90,6F,CD,75,BB,3E,8F,CD
670 DATA 5D,BB,C1,C5,26,28,3E,D,90,6F
680 DATA CD,75,BB,3E,8F,CD,5D,BB,C1,C5
690 DATA 26,1,3E,C,80,6F,CD,75,BB,3E
700 DATA 8F,CD,5D,BB,C1,C5,26,28,3E,C
710 DATA 80,6F,CD,75,BB,3E,8F,CD,5D,BB
720 DATA C1,10,BE,16,1A,D5,3E,2,42,4A
730 DATA CD,32,BC,6,A,CD,F,92,D1,15
740 DATA 3E,1,BA,20,EC,3E,3,CD,90,BB
750 DATA 26,1,2E,19,CD,75,BB,21,B2,94
760 DATA 6,6,CD,3C,9B,2A,5D,95,CD,59
770 DATA 9B,26,11,2E,19,CD,75,BB,21,B8

```

```

780 DATA 94,6,3,CD,3C,9B,2A,65,95,CD
790 DATA 59,9B,26,1E,2E,19,CD,75,BB,6
800 DATA 6,21,68,95,CD,3C,9B,3A,67,95
810 DATA 47,C5,3E,A5,CD,5D,BB,C1,10,F7
820 DATA 3E,1,CD,9F,BB,CD,F7,92,CD,6C
830 DATA 94,3E,1,CD,90,BB,2A,76,95,CD
840 DATA 75,BB,3E,8F,CD,5D,BB,3E,3,CD
850 DATA 90,BB,2A,6E,95,22,76,95,CD,75
860 DATA BB,3A,7E,95,CD,5D,BB,3E,1,CD
870 DATA 90,BB,2A,78,95,CD,75,BB,3E,8F
880 DATA CD,5D,BB,3E,3,CD,90,BB,2A,70
890 DATA 95,22,78,95,CD,75,BB,3A,7E,95
900 DATA CD,5D,BB,3E,1,CD,90,BB,2A,7A
910 DATA 95,CD,75,BB,3E,8F,CD,5D,BB,3E
920 DATA 3,CD,90,BB,2A,72,95,22,7A,95
930 DATA CD,75,BB,3A,7E,95,CD,5D,BB,3E
940 DATA 1,CD,90,BB,2A,7C,95,CD,75,BB
950 DATA 3E,8F,CD,5D,BB,3E,3,CD,90,BB
960 DATA 2A,74,95,22,7C,95,CD,75,BB,3A
970 DATA 7E,95,CD,5D,BB,3A,7E,95,3C,FE
980 DATA AD,20,2,3E,AA,32,7E,95,3E,2C
990 DATA CD,1E,BB,28,13,CD,B6,BC,2E,1
1000 DATA CD,40,9B,CD,1B,BB,38,FB,CD,18
1010 DATA BB,CD,B9,BC,CD,1F,9B,11,77,EC
1020 DATA A7,ED,52,38,7,3E,1,32,7F,95
1030 DATA 18,10,CD,1F,9B,11,88,13,A7,ED
1040 DATA 52,30,5,3E,FF,32,7F,95,3A,7F
1050 DATA 95,2A,6E,95,85,FE,1,28,7,FE
1060 DATA 18,28,3,32,6E,95,CD,1F,9B,11
1070 DATA 77,EC,A7,ED,52,38,7,3E,1,32
1080 DATA 80,95,18,10,CD,1F,9B,11,88,13
1090 DATA A7,ED,52,30,5,3E,FF,32,80,95
1100 DATA 3A,80,95,2A,70,95,84,FE,1,28
1110 DATA 7,FE,28,28,3,32,71,95,CD,1F
1120 DATA 9B,11,77,EC,A7,ED,52,38,7,3E
1130 DATA 1,32,81,95,18,10,CD,1F,9B,11
1140 DATA 88,13,A7,ED,52,30,5,3E,FF,32
1150 DATA 81,95,3A,81,95,2A,72,95,85,FE
1160 DATA 1,28,7,FE,18,28,3,32,72,95
1170 DATA CD,1F,9B,11,77,EC,A7,ED,52,38
1180 DATA 7,3E,1,32,82,95,18,10,CD,1F
1190 DATA 9B,11,88,13,A7,ED,52,30,5,3E
1200 DATA FF,32,82,95,3A,82,95,2A,74,95
1210 DATA 8A,FE,1,28,7,FE,28,28,3,32
1220 DATA 75,95,2A,88,95,CD,75,BB,3E,2
1230 DATA CD,90,BB,AF,CD,9F,BB,3E,9F,CD
1240 DATA 5D,BB,3E,1,CD,9F,BB,2A,86,95
1250 DATA 22,88,95,CD,75,BB,3E,3,CD,90
1260 DATA BB,3A,83,95,CD,5D,BB,3A,92,95
1270 DATA FE,1,20,3D,2A,8A,95,E5,11,CB
1280 DATA 94,ED,53,5B,95,CD,18,92,E1,44
1290 DATA 4D,CD,8A,90,3A,4C,99,FE,0,CA
1300 DATA D2,89,24,22,8A,95,3E,28,BC,28
1310 DATA 14,CD,18,92,ED,4B,8A,95,CD,8A
1320 DATA 90,3A,4C,99,FE,0,CA,D2,89,18
1330 DATA 4,AF,32,92,95,3A,93,95,FE,1
1340 DATA 20,3D,2A,8C,95,E5,11,BB,94,ED
1350 DATA 53,5B,95,CD,18,92,E1,44,4D,CD
1360 DATA 8A,90,3A,4C,99,FE,0,CA,D2,89
1370 DATA 2C,22,8C,95,3E,18,BD,28,14,CD
1380 DATA 18,92,ED,4B,8C,95,CD,8A,90,3A
1390 DATA 4C,99,FE,0,CA,D2,89,18,4,AF
1400 DATA 32,93,95,3A,94,95,FE,1,20,3D
1410 DATA 2A,8E,95,E5,11,CB,94,ED,53,5B
1420 DATA 95,CD,18,92,E1,44,4D,CD,8A,90
1430 DATA 3A,4C,99,FE,0,CA,D2,89,25,22
1440 DATA 8E,95,3E,1,BC,28,14,CD,18,92
1450 DATA ED,4B,8E,95,CD,8A,90,3A,4C,99
1460 DATA FE,0,CA,D2,89,18,4,AF,32,94
1470 DATA 95,3A,95,95,FE,1,20,3D,2A,90
1480 DATA 95,E5,11,BB,94,ED,53,5B,95,CD
1490 DATA 18,92,E1,44,4D,CD,8A,90,3A,4C
1500 DATA 99,FE,0,CA,D2,89,2D,22,90,95
1510 DATA 3E,1,BD,28,14,CD,18,92,ED,4B
1520 DATA 90,95,CD,8A,90,3A,4C,99,FE,0
1530 DATA CA,D2,89,18,4,AF,32,95,95,3A
1540 DATA 92,95,FE,1,28,3E,3A,6E,95,47
1550 DATA 3A,86,95,B0,20,34,3E,4,CD,AD
1560 DATA BC,E6,80,20,6,21,A9,94,CD,AA
1570 DATA BC,3E,1,32,92,95,2A,6E,95,24
1580 DATA 22,8A,95,11,CB,94,ED,53,5B,95
1590 DATA CD,18,92,ED,4B,8A,95,CD,8A,90
1600 DATA 3A,4C,99,FE,0,CA,D2,89,3A,93
1610 DATA 95,FE,1,28,3E,3A,71,95,47,3A

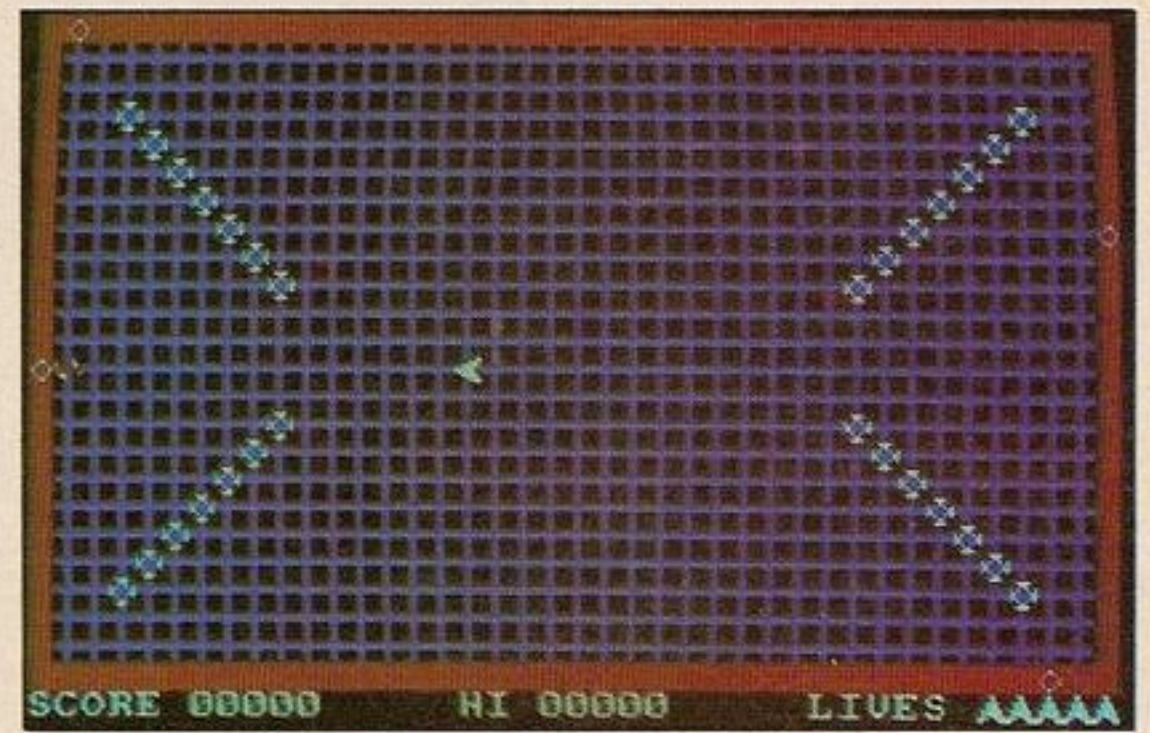
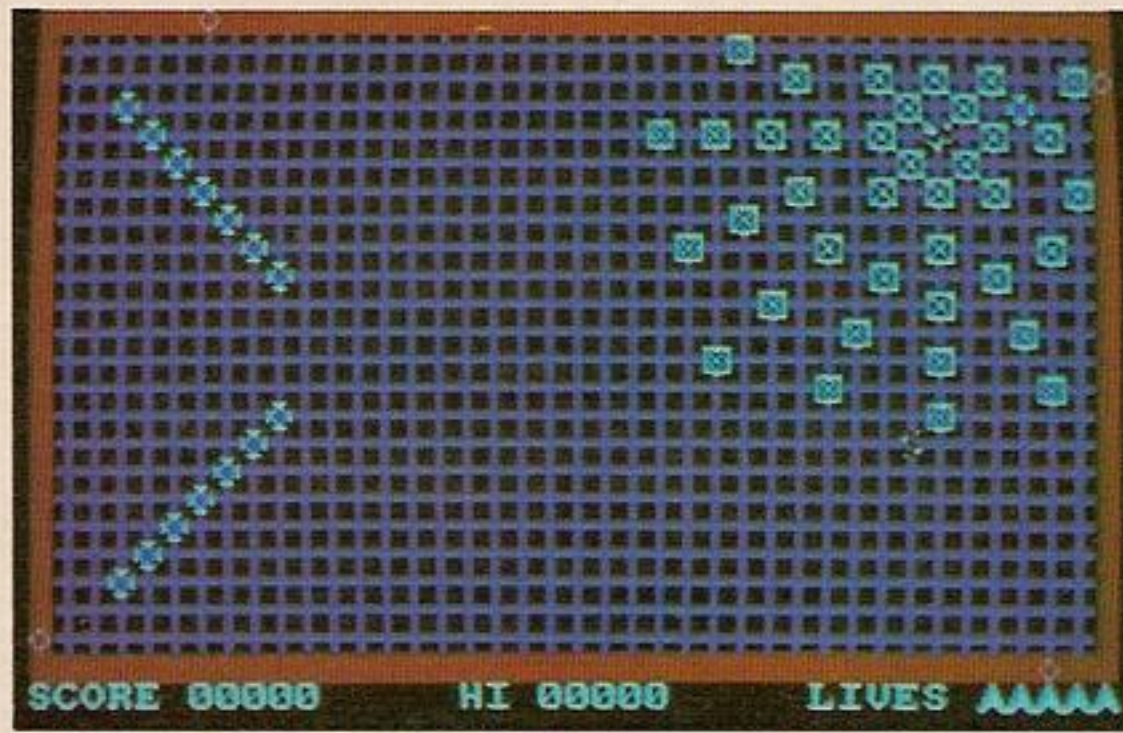
```

```

1620 DATA 87,95,BB,20,34,3E,4,CD,AD,BC
1630 DATA E6,80,20,6,21,A9,94,CD,AA,BC
1640 DATA 3E,1,32,93,95,2A,70,95,2C,22
1650 DATA 8C,95,11,BB,94,ED,53,5B,95,CD
1660 DATA 18,92,ED,4B,8C,95,CD,8A,90,3A
1670 DATA 4C,99,FE,0,CA,D2,89,3A,94,95
1680 DATA FE,1,28,3E,3A,72,95,47,3A,86
1690 DATA 95,B8,20,34,3E,4,CD,AD,BC,E6
1700 DATA 80,20,6,21,A9,94,CD,AA,BC,3E
1710 DATA 1,32,94,95,2A,72,95,25,22,8E
1720 DATA 95,11,CB,94,ED,53,5B,95,CD,18
1730 DATA 92,ED,4B,8E,95,CD,8A,90,3A,4C
1740 DATA 99,FE,0,CA,D2,89,3A,95,95,FE
1750 DATA 1,28,3E,3A,75,95,47,3A,87,95
1760 DATA B8,20,34,3E,4,CD,AD,BC,E6,80
1770 DATA 20,6,21,A9,94,CD,AA,BC,3E,1
1780 DATA 32,95,95,2A,74,95,2D,22,90,95
1790 DATA 11,BB,94,ED,53,5B,95,CD,18,92
1800 DATA ED,4B,90,95,CD,8A,90,3A,4C,99
1810 DATA FE,0,CA,D2,89,3E,43,CD,1E,BB
1820 DATA 20,7,CD,24,BB,E6,1,28,10,AF
1830 DATA 32,84,95,3E,1,32,85,95,3E,A5
1840 DATA 32,83,95,18,58,3E,45,CD,1E,BB
1850 DATA 20,7,CD,24,BB,E6,2,28,10,AF
1860 DATA 32,84,95,3E,FF,32,85,95,3E,A6
1870 DATA 32,83,95,18,3A,3E,27,CD,1E,BB
1880 DATA 20,7,CD,24,BB,E6,4,28,10,AF
1890 DATA 32,85,95,3E,FF,32,84,95,3E,A7
1900 DATA 32,83,95,18,1C,3E,1F,CD,1E,BB
1910 DATA 20,7,CD,24,BB,E6,8,28,1E,AF
1920 DATA 32,85,95,3E,1,32,84,95,3E,A8
1930 DATA 32,83,95,3A,84,95,FE,FF,20,D
1940 DATA 3A,87,95,3D,FE,1,28,3C,32,87
1950 DATA 95,18,37,FE,1,20,D,3A,87,95
1960 DATA 3C,FE,28,2B,32,87,95,18,26
1970 DATA 3A,85,95,FE,1,20,D,3A,86,95
1980 DATA 3D,FE,1,28,17,32,86,95,18,12
1990 DATA 3A,85,95,FE,FF,20,B,3A,86,95
2000 DATA 3C,FE,18,28,3,32,86,95,2A,86
2010 DATA 95,CD,75,BB,3A,4D,99,47,CD,60
2020 DATA BB,B8,20,4B,3E,2,CD,AD,BC,E6
2030 DATA 80,20,6,21,98,94,CD,AA,BC,26
2040 DATA 7,2E,19,CD,75,BB,AF,CD,9F,BB
2050 DATA 2A,5D,95,11,5,19,22,5D,95
2060 DATA CD,59,9B,3E,1,CD,9F,BB,3A,4B
2070 DATA 99,3D,32,4B,99,20,16,3A,96,95
2080 DATA 3C,32,96,95,FE,B,20,5,3E,1
2090 DATA 32,96,95,CD,CD,91,C3,D2,89,C3
2100 DATA 8F,8B,C9,3A,86,95,B9,C0,3A,87
2110 DATA 95,B8,C0,AF,CD,9F,BB,CD,A7,BC
2120 DATA 21,8B,94,CD,AA,BC,3E,A9,32,50
2130 DATA 99,6,7,C5,6,40,11,1B,94,C5
2140 DATA 1A,47,3A,86,95,80,6F,13,1A,47
2150 DATA 3A,87,95,80,67,D5,7D,D6,2,FE
2160 DATA 16,30,10,7C,D6,2,FE,26,30,9
2170 DATA CD,75,BB,3A,50,99,CD,5D,BB,D1
2180 DATA 13,C1,10,D3,3A,50,99,3C,32,50
2190 DATA 99,C1,10,C3,AF,32,4C,99,3A,67
2200 DATA 95,3D,32,67,95,3E,1,CD,9F,BB
2210 DATA 3A,67,95,FE,0,C2,CD,91,2A,65
2220 DATA 95,ED,5B,5D,95,A7,ED,52,30,5
2230 DATA 62,6B,22,65,95,3E,25,32,63,95
2240 DATA 3E,15,32,64,95,3E,2,32,62,95
2250 DATA 32,61,95,CD,A7,BC,AF,CD,9F,BB
2260 DATA 3E,1,CD,90,BB,6,B,C5,3A,63
2270 DATA 95,47,C5,CD,3,92,3A,62,95,3C
2280 DATA 32,62,95,C1,10,F2,3A,64,95,47
2290 DATA C5,CD,3,92,3A,61,95,3C,32,61
2300 DATA 95,C1,10,F2,3A,63,95,47,C5,CD
2310 DATA 3,92,3A,62,95,3D,32,62,95,C1
2320 DATA 10,F2,3A,64,95,47,C5,CD,3,92
2330 DATA 3A,61,95,3D,32,61,95,C1,10,F2
2340 DATA 3A,64,95,D6,2,32,64,95,3A,63
2350 DATA 95,D6,2,32,63,95,3A,61,95,3C
2360 DATA 32,61,95,3A,62,95,3C,32,62,95
2370 DATA C1,10,96,3E,2,CD,90,BB,3E,A8
2380 DATA 32,4D,99,6,C,C5,78,C6,1,47
2390 DATA 4F,3E,2,CD,32,BC,3E,55,32,4B
2400 DATA 99,21,51,99,22,4E,99,CD,FE,93
2410 DATA 3A,4D,99,3C,32,4D,99,C1,10,DD
2420 DATA 2E,5,CD,48,9B,C9,CD,A7,BC,21
2430 DATA 0,C0,36,F0,11,1,C0,6,8,C5
2440 DATA 1,FF,7,CD,19,BD,ED,B0,6,3C
2450 DATA CD,F,92,C1,10,EF,1B,1B,36,0

```


End Zone



2460 DATA 6,8,C5,1,FF,7,CD,19,BD,ED
 2470 DATA B8,6,3C,CD,F,92,C1,10,EF,C9
 2480 DATA 2A,61,95,CD,75,BB,3E,E9,CD,5D
 2490 DATA BB,C9,C5,6,FF,10,FE,C1,10,F8
 2500 DATA C9,25,2D,CD,1A,BC,E5,ED,5B,5B
 2510 DATA 95,E,8,6,2,1A,AE,77,13,23
 2520 DATA 10,F9,E1,CD,26,BC,E5,D,20,EF
 2530 DATA E1,C9,3E,1,6,2,E,7,CD,32
 2540 DATA BC,26,1,2E,1,CD,3E,BC,3E,1
 2550 DATA CD,90,BB,3E,1,CD,E,BC,26,D
 2560 DATA 2E,6,CD,75,BB,21,1A,9A,6,F
 2570 DATA CD,EB,92,26,D,2E,7,CD,75,BB
 2580 DATA 21,A,9A,6,10,CD,EB,92,26,D
 2590 DATA 2E,8,CD,75,BB,21,1A,9A,6,10
 2600 DATA CD,EB,92,26,D,2E,9,CD,75,BB
 2610 DATA 21,2A,9A,6,10,CD,EB,92,26,D
 2620 DATA 2E,A,CD,75,BB,21,1A,9A,6,F
 2630 DATA CD,EB,92,26,B,2E,C,CD,75,BB
 2640 DATA 21,49,9A,6,14,CD,EB,92,26,D
 2650 DATA 2E,D,CD,75,BB,21,5D,9A,6,E
 2660 DATA CD,EB,92,26,C,2E,E,CD,75,BB
 2670 DATA 21,6B,9A,6,11,CD,EB,92,26,B
 2680 DATA 2E,F,CD,75,BB,21,7C,9A,6,10
 2690 DATA CD,EB,92,26,B,2E,10,CD,75,BB
 2700 DATA 21,8C,9A,6,14,CD,EB,92,CD,1C
 2710 DATA 94,C9,C5,7E,E5,CD,5D,BB,E1,23
 2720 DATA C1,10,F5,C9,3A,96,95,FE,1,20
 2730 DATA 14,3E,14,32,4B,99,3E,A9,32,4D
 2740 DATA 99,21,97,95,22,4E,99,CD,FE,93
 2750 DATA C9,3A,96,95,FE,2,20,14,3E,1C
 2760 DATA 32,4B,99,3E,AD,32,4D,99,21,7F
 2770 DATA 95,22,4E,99,CD,FE,93,C9,3A,96
 2780 DATA 95,FE,3,20,14,3E,40,32,4B,99
 2790 DATA 3E,AE,32,4D,99,21,7F,95,22,4E
 2800 DATA 99,CD,FE,93,C9,3A,96,95,FE,4
 2810 DATA 20,14,3E,24,32,4B,99,3E,AF,32
 2820 DATA 4D,99,21,77,96,22,4E,99,CD,FE
 2830 DATA 93,C9,3A,96,95,FE,5,20,14,3E
 2840 DATA 2A,32,4B,99,3E,B0,32,4D,99,21
 2850 DATA BF,96,22,4E,99,CD,FE,93,C9,3A
 2860 DATA 96,95,FE,6,20,14,3E,3C,32,4B
 2870 DATA 99,3E,B1,32,4D,99,21,13,97,22
 2880 DATA 4E,99,CD,FE,93,C9,3A,96,95,FE
 2890 DATA 7,20,14,3E,24,32,4B,99,3E,B2
 2900 DATA 32,4D,99,21,8B,97,22,4E,99,CD
 2910 DATA FE,93,C9,3A,96,95,FE,8,20,14
 2920 DATA 3E,70,32,4B,99,3E,B3,32,4D,99
 2930 DATA 21,D3,97,22,4E,99,CD,FE,93,C9
 2940 DATA 3A,96,95,FE,9,20,14,3E,28,32
 2950 DATA 4B,99,3E,B4,32,4D,99,21,B3,98
 2960 DATA 22,4E,99,CD,FE,93,C9,3E,24,32
 2970 DATA 4B,99,3E,B5,32,4D,99,21,3,99
 2980 DATA 22,4E,99,CD,FE,93,C9,3A,4B,99
 2990 DATA 47,ED,5B,4E,99,C5,1A,6F,13,1A
 3000 DATA 67,D5,CD,75,BB,3A,4D,99,CD,5D
 3010 DATA BB,D1,13,C1,10,EB,C9,CD,1B,BB
 3020 DATA 3B,FB,3E,3,CD,90,BB,11,A0,9A
 3030 DATA 6,7F,C5,D5,26,28,2E,19,CD,75
 3040 DATA BB,1A,CD,5D,BB,6,2,C5,11,80
 3050 DATA C7,6,8,CD,19,BD,CD,19,BD,C5
 3060 DATA D5,62,6B,23,1,4F,0,ED,B0,D1
 3070 DATA EB,CD,26,BC,EB,C1,10,ED,C1,10
 3080 DATA DE,A7,CD,1B,BB,38,7,D1,13,C1
 3090 DATA 10,C4,18,BD,D1,C1,C9,AF,CD,AD
 3100 DATA BC,E6,80,C0,21,7E,94,CD,AA,BC
 3110 DATA C9,3,64,A,14,1,1,0,0,2
 3120 DATA 0,2,80,0,3,64,3,1,1,2
 3130 DATA 0,C8,0,5,1,0,64,3,F,1
 3140 DATA 1,2,3,0,0,0,A,F,32,0
 3150 DATA 3,3C,FF,A,3,1E,FF,A,4,4
 3160 DATA 3,50,0,F,1,50,0,53,43,4F
 3170 DATA 52,45,20,48,49,20,11,CC,33,88
 3180 DATA 77,0,33,88,11,CC,0,EE,11,CC
 3190 DATA 33,88,0,0,0,44,88,EE,DD,FF
 3200 DATA FF,BB,77,11,22,0,0,0,FF,FF
 3210 DATA 1,1,1,FF,FF,1,FE,0,2,FE
 3220 DATA 0,2,FE,FE,FE,2,2,2,0,FE
 3230 DATA 2,0,FC,0,0,FC,0,4,4,0
 3240 DATA 4,FC,FC,4,FC,FC,4,4,6,0
 3250 DATA 0,FA,0,6,FA,0,FE,FB,2,5
 3260 DATA 2,FB,5,2,FB,FE,5,FE,FE,5
 3270 DATA FB,2,3,FB,0,8,FB,FD,7,3
 3280 DATA FA,6,0,FB,8,0,FA,FA,FB,3
 3290 DATA 6,FA,3,7,FB,0,7,FD,FD,FB

3300 DATA 6,6,FD,7,9,FC,F8,8,F8,F8
 3310 DATA 8,8,4,F7,0,A,F6,0,9,4
 3320 DATA FC,F7,FC,9,8,F8,F7,FC,A,0
 3330 DATA 0,F6,F7,4,4,9,0,0,0,0
 3340 DATA 39,30,0,0,0,0,0,0,5,4C
 3350 DATA 49,56,45,53,20,0,1,1,0,0
 3360 DATA 28,19,0,0,1,1,0,0,28,19
 3370 DATA 0,A9,0,0,0,0,A5,0,0,0
 3380 DATA 0,0,0,0,0,0,0,0,0
 3390 DATA 0,0,0,0,0,1,6,6,8,21
 3400 DATA 12,7,11,23,8,8,13,6,13,21
 3410 DATA 6,23,6,21,7,7,13,23,8,6
 3420 DATA 13,8,11,6,8,23,12,22,6,8
 3430 DATA 11,8,7,22,11,21,7,7,10,20
 3440 DATA 5,24,15,4,4,4,8,21,13,23
 3450 DATA F,A,9,9,A,1F,15,25,13,6
 3460 DATA 5,5,4,25,11,8,12,22,14,5
 3470 DATA 6,6,6,23,14,24,A,A,12,7
 3480 DATA F,1F,7,22,10,9,9,20,8,8
 3490 DATA 11,21,2,2,14,5,4,25,13,27
 3500 DATA 2,6,16,2,12,2,17,23,2,22
 3510 DATA 7,27,17,26,7,2,4,2,17,7
 3520 DATA 14,24,5,27,5,5,17,4,15,27
 3530 DATA 2,25,14,2,2,4,17,21,2,27
 3540 DATA 17,24,4,4,6,2,17,5,15,25
 3550 DATA 2,8,8,2,15,4,2,23,11,27
 3560 DATA 17,8,17,2,3,27,3,3,11,2
 3570 DATA 16,27,17,22,5,24,2,7,8,27
 3580 DATA 2,21,17,27,3,2,13,2,17,6
 3590 DATA 16,26,2,24,3,26,2,5,16,3
 3600 DATA 12,27,6,27,5,2,15,2,14,27
 3610 DATA 17,25,2,3,17,3,2,26,4,27
 3620 DATA C,6,F,25,11,4,B,22,8,4
 3630 DATA E,22,C,4,A,25,9,5,F,4
 3640 DATA C,23,E,7,B,5,D,25,C,21
 3650 DATA A,4,F,23,8,25,D,21,A,23
 3660 DATA B,7,E,24,B,24,D,4,D,6
 3670 DATA 11,25,C,8,C,25,F,6,9,24
 3680 DATA E,5,A,6,10,24,D,8,D,23
 3690 DATA 10,5,5,B,12,12,9,19,5,1A
 3700 DATA 10,15,9,10,A,1B,5,E,6,10
 3710 DATA 14,15,7,19,8,C,10,13,6,1E
 3720 DATA 5,1C,7,8,12,17,13,13,A,E
 3730 DATA 5,1B,9,1C,7,10,13,16,5,D
 3740 DATA 9,D,8,1D,11,12,5,F,8,19
 3750 DATA A,F,11,17,A,1A,6,B,5,1D
 3760 DATA 10,16,5,C,6,19,14,14,5,1E
 3770 DATA 8,10,7,1E,10,14,4,15,15,16
 3780 DATA 5,14,14,17,6,13,13,18,7,12
 3790 DATA 12,19,8,11,11,1A,9,10,10,1B
 3800 DATA A,F,F,1C,B,E,E,1D,C,D
 3810 DATA D,1E,D,D,C,1E,E,E,B,1D
 3820 DATA F,F,A,1C,10,10,9,1B,11,11
 3830 DATA 8,1A,12,12,7,19,13,13,6,18
 3840 DATA 14,14,5,17,15,15,4,16,14,16
 3850 DATA 5,15,13,17,6,14,12,18,7,13
 3860 DATA 12,17,7,14,12,16,7,15,12,15
 3870 DATA 7,16,12,14,7,17,12,13,7,18
 3880 DATA 13,14,6,17,14,15,5,16,13,16
 3890 DATA 6,15,13,15,6,16,3,4,3,3
 3900 DATA 4,3,15,3,16,3,16,4,16,25
 3910 DATA 16,26,15,26,4,26,3,26,3,25
 3920 DATA 7,8,7,7,8,7,11,7,12,7
 3930 DATA 12,8,12,21,12,22,11,22,8,22
 3940 DATA 7,22,7,21,B,C,B,B,C,B
 3950 DATA D,B,E,B,E,C,E,1D,E,1E
 3960 DATA D,1E,C,1E,B,1E,B,1D,8,E
 3970 DATA 11,E,11,1B,8,1B,4,E,15,E
 3980 DATA 15,1B,4,1B,8,4,11,4,11,21
 3990 DATA 4,21,6,6,13,6,13,23,6,23
 4000 DATA 6,C,13,C,4,1F,11,1E,11,A
 4010 DATA 8,7,8,21,15,A,4,A,15,25
 4020 DATA 8,A,11,7,6,1D,8,25,11,25
 4030 DATA 13,1D,15,8,4,8,8,1F,15,1F
 4040 DATA 4,4,4,25,15,21,15,4,12,1B
 4050 DATA 4,C,5,1B,8,1D,11,C,11,1C
 4060 DATA 8,23,11,23,8,C,15,C,15,1D
 4070 DATA 13,1B,4,6,15,6,13,4,6,4
 4080 DATA 4,23,6,1B,11,5,8,5,4,1D
 4090 DATA 15,23,14,B,8,8,7,B,7,22
 4100 DATA 14,22,11,D,11,8,8,6,11,1F
 4110 DATA 4,1E,8,22,11,22,11,B,7,4
 4120 DATA 4,5,11,24,14,1B,8,1C,8,B
 4130 DATA 15,5,4,24,4,1C,12,D,11,1D

4140 DATA 15,22,11,6,13,5,15,1C,12,24
 4150 DATA 8,24,6,1C,4,D,15,B,13,1C
 4160 DATA 15,1E,15,24,15,7,5,D,5,4
 4170 DATA 7,1B,15,D,14,4,6,5,8,1E
 4180 DATA 12,4,5,24,8,D,4,7,4,B
 4190 DATA 4,22,2,12,D,A,B,20,15,14
 4200 DATA 5,16,B,E,D,1C,17,19,2,19
 4210 DATA B,B,17,12,F,1F,E,E,4,14
 4220 DATA B,1D,15,17,E,B,D,21,14,15
 4230 DATA C,F,4,17,E,1D,F,D,A,C
 4240 DATA A,1F,5,15,F,1E,F,C,14,16
 4250 DATA 3,18,D,F,C,1C,A,1E,16,13
 4260 DATA C,21,A,D,3,13,16,18,E,20
 4270 DATA C,A,4,E,16,1B,2,1C,16,D
 4280 DATA 2,F,3,1A,17,F,17,19,2,C
 4290 DATA 17,C,17,1C,2,19,17,1A,3,D
 4300 DATA 16,F,3,1C,2,D,15,1B,3,F
 4310 DATA 17,D,4,1B,3,E,16,1C,2,10
 4320 DATA 15,E,17,1B,2,E,16,E,17,1D
 4330 DATA 17,10,2,1A,3,1B,16,1A,2,1D
 4340 DATA 17,E,2,1B,0,1,0,0,0,0
 4350 DATA 11,11,9,1D,A,A,10,1D,8,13
 4360 DATA B,16,10,A,E,17,12,18,8,19
 4370 DATA 7,B,12,C,7,1E,B,10,F,14
 4380 DATA B,C,12,1F,8,10,F,D,E,1E
 4390 DATA B,1A,F,10,10,18,B,1E,A,13
 4400 DATA 12,1C,9,16,E,B,E,19,F,1C
 4410 DATA 11,D,7,D,11,17,9,1A,9,11
 4420 DATA 10,13,7,1F,7,16,12,12,8,A
 4430 DATA B,1D,7,11,11,A,8,1D,A,10
 4440 DATA E,10,11,1C,10,D,7,1A,7,1D
 4450 DATA B,B,F,17,F,1E,9,12,E,1C
 4460 DATA 12,B,7,C,12,19,7,12,F,A
 4470 DATA A,D,B,1F,8,17,B,13,11,13
 4480 DATA 9,A,E,14,10,1C,9,13,E,C
 4490 DATA 9,1E,8,1A,12,17,8,16,9,10
 4500 DATA 10,11,11,1E,9,18,10,17,A,16
 4510 DATA E,1D,A,1A,B,D,A,1D,E,18
 4520 DATA 96,9A,9A,9A,9C,96,C3,20,20,20
 4530 DATA 9E,96,9A,9A,C3,95,20,20,20
 4540 DATA 95,B7,C3,20,20,95,95,20,20,B7
 4550 DATA C3,97,9A,9D,20,20,95,20,B7,C3
 4560 DATA 20,95,95,20,20,20,95,95,20,20
 4570 DATA 20,20,95,20,20,B7,C3,95,95,20
 4580 DATA 20,B6,C0,93,9A,9A,99,9B,20
 4590 DATA 20,20,B7,99,93,9A,9A,C0,96,9A
 4600 DATA 9A,9C,20,C2,9A,C3,20,96,C3,20
 4610 DATA 20,20,9E,96,9A,9A,9C,B6,C0
 4620 DATA C2,B8,20,B7,C3,95,B7,C3,20,20
 4630 DATA 95,95,B6,C0,20,95,20,20,95
 4640 DATA 95,20,B7,C3,20,95,97,9A,9D,B6
 4650 DATA C0,20,20,C1,B9,20,B6,C0,95,20
 4660 DATA 20,B7,C3,95,95,93,9A,9A,99,20
 4670 DATA C1,9A,C0,20,9B,20,20,20,B7,99
 4680 DATA 93,9A,9A,9A,99,A4,20,31,39,38
 4690 DATA 35,20,57,49,4E,4B,59,57,41,4E
 4700 DATA 4B,59,20,53,4F,46,54,57,41,52
 4710 DATA 45,20,4C,74,64,2E,20,20,4B,45
 4720 DATA 59,53,3A,2D,20,51,2D,55,50,20
 4730 DATA 41,2D,44,4F,57,4E,20,3C,2D,4C
 4740 DATA 45,46,54,20,3E,2D,52,49,47,48
 4750 DATA 54,20,4F,52,20,4A,4F,59,53,54
 4760 DATA 49,43,4B,20,20,20,20,48,20
 4770 DATA 74,6F,20,48,4F,4C,44,20,20,20
 4780 DATA 20,20,70,72,65,73,73,20,61,6E
 4790 DATA 79,20,6B,65,79,20,74,6F,20,73
 4800 DATA 74,61,72,74,20,20,20,20,20,20
 4810 DATA 20,20,2A,5F,95,E5,29,29,29,29
 4820 DATA 29,29,29,29,D1,19,11,29,0,19
 4830 DATA 22,5F,95,C9,7D,C6,30,CD,5A,BB
 4840 DATA C9,7E,E5,C5,CD,5D,BB,C1,E1,23
 4850 DATA 10,F5,C9,6,0,C5,6,0,10,FE
 4860 DATA C1,10,F8,2D,AF,BD,C2,48,9B,C9
 4870 DATA 11,10,27,CD,8B,9B,CD,35,9B,EB
 4880 DATA 11,EB,3,CD,8B,9B,CD,35,9B,EB
 4890 DATA 11,64,0,CD,8B,9B,CD,35,9B,EB
 4900 DATA 11,A,0,CD,8B,9B,CD,35,9B,EB
 4910 DATA 11,1,0,CD,8B,9B,CD,35,9B,C9
 4920 DATA 7A,2F,57,7B,2F,5F,13,E5,AF,67
 4930 DATA 6F,E3,7A,B3,20,2,E1,C9,6,11
 4940 DATA CB,15,CB,14,38,11,10,F8,18,15
 4950 DATA E3,E5,19,D2,B0,9B,E3,E1,E3,CB
 4960 DATA 15,CB,14,E3,CB,15,CB,14,E3,10
 4970 DATA EB,D1,CB,2A,CB,1B,0,9999