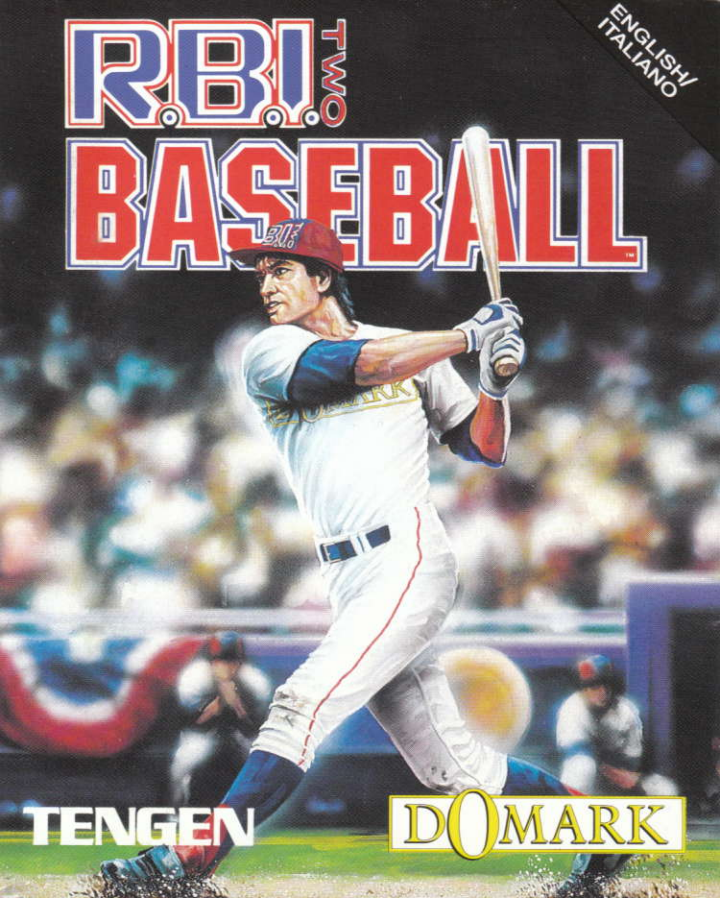


ENGLISH/  
ITALIANO

RBI TWO

BASEBALL



TENGEN

DOMARK

## ★ **BASEBALL FACTS:**

Baseball takes place on a field consisting of two parts - the **Infield** (the **Diamond**) and the **Outfield**. It may look like rounders, but it sure as hell ain't! Pitchers can throw balls at speeds of up to 100mph!, although with over 162 games per season they need constant resting and rotation as starters.

Most of the action takes place in the infield diamond. The bases which are located on the points of the aforementioned diamond are 90 feet apart and are known as **Home, First, Second** and **Third Base**. When batting, your objective is to move along each of the bases until you get home - Ok maybe it is a bit like rounders! If you have time you can complete the circuit in one, scoring one run, although usually you advance one or two bases at a time. The best hit is one that sends the ball straight over the wall and into the crowd - a **Home Run**, whereby every base that is loaded (has a runner on it) automatically gets home, so if first and third are loaded and the batter hits a home run, they all walk around to **Home** scoring 3 runs! (ie first, third and of course the batter).

A ball is called a **Foul** when it is hit behind the foul lines which run from home through third to the perimeter and from home through first to the perimeter.

All this presumes that you manage to hit a ball, which of course is tricky - at least at first. So what happens then? Well if you miss it and the ball has travelled over the plate, then it's called a **Strike!** Confused? - you will be.

## ★ **BASEBALL SCENARIOS:**


Lets take a short walk through a series of pitches to see if we can clear things up :

1. The **Pitcher** (the guy who throws the ball) steps up to the **Mound** (the lump of earth in the centre of the diamond), he winds up, spins and the ball comes flying out at about 90mph straight at the **Batter** just 20 yards away aiming for the **Strike Zone** (imagine a box beginning at the batter's knees and ending at the top of his chest, located over the plate), the batter swings and misses - its a **strike!**

2. The pitcher gets ready again, he pitches, but now he's a bit over-confident after getting a strike, so the ball misses the strike zone, and the batter doesn't swing (if he did swing but didn't connect with the ball, it would be a strike anyway) the umpire waves his hands - its a **Ball!**

3. The pitcher is really annoyed now, and lets fly a fastball, straight and true at the plate, the batter swings, connects and the ball flies across the ground, past the short stop coming to rest beyond the **Left Field** fielder at the perimeter. The batter drops the bat and runs like hell for first base. He makes it in on a slide just before the **First Baseman** catches the ball - **Safe!**

4. The pitcher gets a signal from his **Catcher** and throws a neat **Curveball**. The batter swings and connects, but it's up in the air - a **Fly Ball**. The ball is caught at centre field - the batter is out, but the runner at first has already started running for second base. Now he has to **Tag Base** (run back to the base he came from), before he can run on. He turns, runs back and makes it!



5. The third batter steps up, the pitcher gets ready, winds up, but the runner on second has already edged off his base and starts running. The ball goes wide, the batter lets it go and before the catcher can get to it, the runner makes third base - its a **Steal!**

So there are three ways in which the fielding side can put out a batter or a runner :

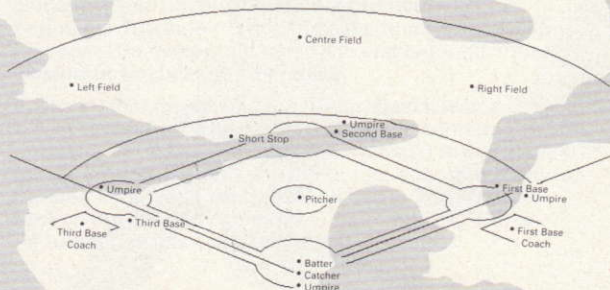
- (i) By causing the batter to fail to hit the ball with three strikes (the catcher must catch these balls).
- (ii) By catching the ball hit by the batter before it bounces.
- (iii) By a fielder touching a runner with the ball before he gets to a base.

Any three of these put out the batting side.

## ★ SOME OUTSTANDING FACTS:

- The fastest pitch ever thrown was by Nolan Ryan - 108 mph! in 1974.
- Over 100,000 balls are used by both major leagues during a season at a cost of \$3 each.
- Britain won the world amateur championships in 1938!
- The first professional baseball team was Cincinnati Red Stockings in 1869 .
- Ronald Reagan was a baseball announcer in Chicago before the Second World War!
- The record number of home runs in a season is held by Babe Ruth, who scored 60 in 1927.
- Baseball is *probably* based on rounders!

## ★ THE BASEBALL FIELD



## ★ INTRODUCTION

**RBI Baseball** simulates real baseball. Most of the rules and strategies of the real game apply - You must pitch, bat, run and substitute players well to achieve success.

Each player in the game has his own strengths and weaknesses based on real life statistics. For batters, the stats include his position, hitting ability, power, running speed and stamina. All players in **RBI** were developed from 1989 statistics of the actual pros - A player who stole a lot of bases and achieved a high batting average in real life will have a high speed in the game. Similarly a player with numerous home runs in real life will have a good power rating in the game. You will learn through experience how best to manage your favourite teams and players.

Note: Due to the execution speed of the 8 bit computers a simplified simulation of the players' actual stats is used.

# ★ HOW TO START PLAY

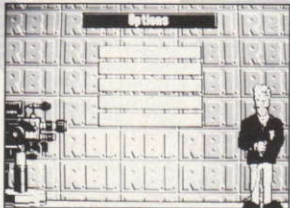
Press **BUTTON #1**:

1P: Play against the computer.

2P: Competitive play.

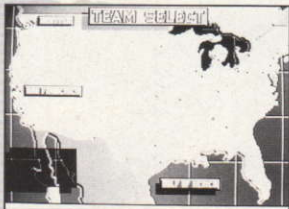
Watch: Computer vs. Computer (Demo Mode).

Options: To select options.



## Team Selection:

Move the cursor to select the team from the conference of your choice. When playing the computer, it will select its team automatically.



## Starting Pitcher Selection:

You may use up to 5 pitchers per game - 1 starter and 4 relievers or 2 starters: Move the cursor to the player that you wish to remove from the line up. His name appears at the top of the screen, below the word 'Replace'. Now move the cursor to the player you wish to insert from the bench. His name appears to the right of the person he is replacing. Press **BUTTON #1** to substitute, and **BUTTON #2** not to substitute.

## Starting Line-Up Selection:

Move the cursor with the Joystick/Keyboard.

Press **BUTTON #1** to change players.

Press **BUTTON #2** to accept current lineup.

## TIME OUT OPTIONS

Move cursor using Joystick/Keyboard.



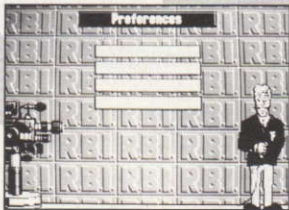


**Instant Replay:** See instant replay of the last play. Some plays cannot be viewed by instant replay.

**Play Ball:** Press BUTTON #1 to return to play.

**Substitutions:** Change Batter/Base Runner or Pitcher.

**Scoreboard:** Press BUTTON #1 to see the scoreboard.



## OFFENSE CONTROLS

### At Bat:

Move the batter's position in the batter's box using the Joystick/Keyboard.



**Button #1:** Batter swings bat. Press and hold for a complete swing. To bunt, press and release quickly.

## **Base Running:**

Use Joystick/Keyboard:

Up: Runner advances from / returns to second base.

Down: Runner advances to home plate.

Left: Runner advances from / returns to third base.

Right: Runner returns to first base.

**Button #1:** Using Joystick/Keyboard select base runner, and press Button #1 to make base runner advance to the next base. Once the base runner is between bases you can make him return by selecting the base he came from with the Joystick/Keyboard and pressing Button #1.

**Note:** Base runners run as soon as the ball is hit. When a fly ball is hit, it is up to the player to make all of the base runners go back to avoid a double or triple play (that is when two or three players on the batting side are put out in the same play.) After tagging up, you may advance to the next base.

## **DEFENSE CONTROLS**

### **Pitching:**

Use Joystick/Keyboard:

Up: Slowball.

Down: Fastball.

Left: Curveball Left.

Right: Curveball Right.

No Direction: Normal speed pitch.

**Note :** The pitcher can move from side to side on the mound before the pitch is thrown.

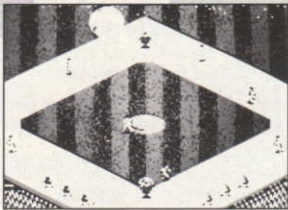
Button #1: Pitches the ball.

Press and hold Button #1, then using the Joystick/Keyboard, press Up, Down, Left or Right to select pitch type. Release Button #1 to throw the pitch.

Button #2 : Pick off base runner.

Use this to catch a runner attempting to edge off the base. You can choose which base the pitcher throws to by using the Joystick/Keyboard and pressing Button #2.

## Fielding:



Use the Joystick/Keyboard

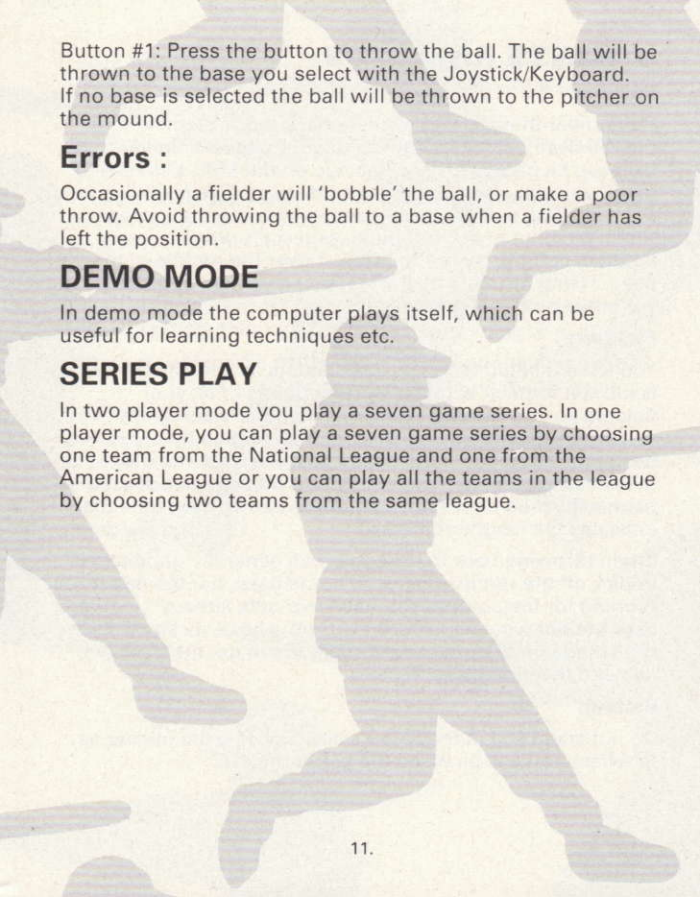
Up: Move fielder up / Select second base.

Down: Move fielder down / Select home plate.

Left: Move fielder left / Select third base.

Right: Move fielder right / Select first base.

After the ball is hit, you may run, dive and jump for the ball. Press Button #1 when the ball is near to you and you will jump or dive depending on whether the ball is in the air or on the ground. Press left or right to control the direction of the dive.



Button #1: Press the button to throw the ball. The ball will be thrown to the base you select with the Joystick/Keyboard. If no base is selected the ball will be thrown to the pitcher on the mound.

## **Errors :**

Occasionally a fielder will 'bobble' the ball, or make a poor throw. Avoid throwing the ball to a base when a fielder has left the position.

## **DEMO MODE**

In demo mode the computer plays itself, which can be useful for learning techniques etc.

## **SERIES PLAY**

In two player mode you play a seven game series. In one player mode, you can play a seven game series by choosing one team from the National League and one from the American League or you can play all the teams in the league by choosing two teams from the same league.

## ★ HINTS AND TIPS

### **Pitching:**

Remember that starting pitchers have more stamina than the relievers. Always be aware of your pitcher's ability because he gets tired. Keep an eye on the MPH and how much you can move the pitcher sideways. The fastball and the sinkerball will use more stamina than normal pitches. When pitching to the computer, especially when a power batter is batting, try not to throw it over the middle of the plate. Using the sinkerball when you have two strikes on the hitter is often a good tactic.

### **Fielding:**

You should begin to move your fielders as soon as the ball is hit. Get familiar with the starting points of all your fielders so you can react quickly instead of waiting until you see the fielders. When a ball is hit high (a 'pop fly'), you need to predict where the ball is going to land and move the closest player to that destination. Adjustments should be made based on the shadow of the ball and the tone that indicates the height of the ball.

When throwing back to the bases, it's generally good to try to pick off the runner closest to home base, not the batter running for first, unless you have two outs already - in that case get out whoever is furthest from a base, as any home runs made on that play won't score if you get the third out and end the innings.

### **Batting:**

Do not stand still in the batter's box. Deceive the pitcher as to where you will be when the ball is thrown.

Learn to 'steal' bases - get your runners going once the ball has been pitched. Be careful not to get picked off though by running too early.

Remember a caught ball means every runner has to tag base before running on.

A tactic often used is the "bunt". When the batter just lets the ball hit his bat without trying to wack it as far as possible, then this is a "bunt".

**General:**

If you replace a fielder with a player that is not from the same position, there will be more chance of errors.

In two player mode, never talk to your opponent about the last pitch. If he knows what you think about it, that may help him on the next pitch.

When you throw the ball, choose the desired direction with the Joystick/Keyboard, then press BUTTON #1. Don't select a direction, let go and then press BUTTON #1. You must hold the Joystick/Keyboard in that direction until after the button is pressed.

# ★ CONTROLS

## IBM Default Controls:

Player #1

F1 = Time Out

F3 = Go to Options

Left = Left Arrow

Right = Right Arrow

Up = Up Arrow

Down = Down Arrow

Button #1 = Enter

Button #2 = Backspace

Player #2

F2 = Time Out

F4 = Goto Options

Left = A

Right = D

Up = W

Down = X

Button #1 = S

Button #2 = Space Bar

## C64:

Player #1

Run/Stop Key = Time Out

C= Key = Bunt

Joystick Port #2

Button #1 = Fire Button

Button #2 = Left Shift

Player #2

Run/Stop Key = Time Out

C= Key = Bunt

Joystick Port #1

Button #1 = Fire Button

Button #2 = Right Shift

## ST/Amiga

Player #1

F1 = Time Out

F3 = Go to Options

Joystick Port #2

Button #1 = Fire Button

Button #2 = Left Shift

Player #2

F2 = Time Out

F4 = Go to Options

Joystick Port #1

Button #1 = Fire Button

Button #2 = Right Shift

# ★ **RBI SPECTRUM/ AMSTRAD VERSION**

## **LOADING:**

### **Spectrum**

- Disk : Insert disk, press ENTER on boot menu.  
Cassette : Type LOAD "" and press ENTER.

### **Amstrad**

- Disk : Insert disk, type RUN "DISC" and press ENTER.  
Cassette : Hold down CONTROL key and press ENTER.  
(If you have a disk drive attached type ITAPE first).

## **CONTROLS:**

Follow on screen instructions for keyboard or use Joystick.

## **TEAM SELECTION:**

Select ONE or TWO player version, then select teams from American or National League. Players must then pick the starter for pitching and the batting order.



# BATTERS SCREEN:

## Pitching

Press FIRE to pitch, LEFT & RIGHT move the pitcher left and right.

After you have pressed FIRE, the pitcher takes a few moments to "wind-up" before he throws. During the wind-up, move the Joystick/Keyboard to select the type of throw you want.

Curve left slow

Curve left normal

Curve left fast

Slow ball

Normal ball

Fast ball

Curve right slow

Curve right normal

Curve right fast

If you want to substitute a pitcher press "CAPS SHIFT C" and follow prompts (F0 on the Amstrad).

If you want to pause the game press "CAPS SHIFT P", any other key unpauses (F1 on the Amstrad).

If you want to quit the game press "CAPS SHIFT Q" (F2 on the Amstrad).

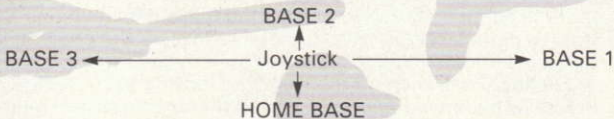
## Batting

LEFT, RIGHT UP & DOWN move the batter. The lower you stand when you hit the ball the greater your swing, but also the chance of missing is higher.

## PITCH SCREEN:

If you are fielding, watch the fielder scanner (bottom left of screen) to see your closest fielder to the ball. LEFT, RIGHT, UP & DOWN move all your fielders until you catch or pick up the ball.

Press FIRE to throw it, quickly followed by a Joystick/Keyboard direction to indicate the base you wish to throw it to.



### Runners

If you have just batted, then any runners you have will run automatically onto the next base. However, they will stop if the ball is too close for them to run safely.

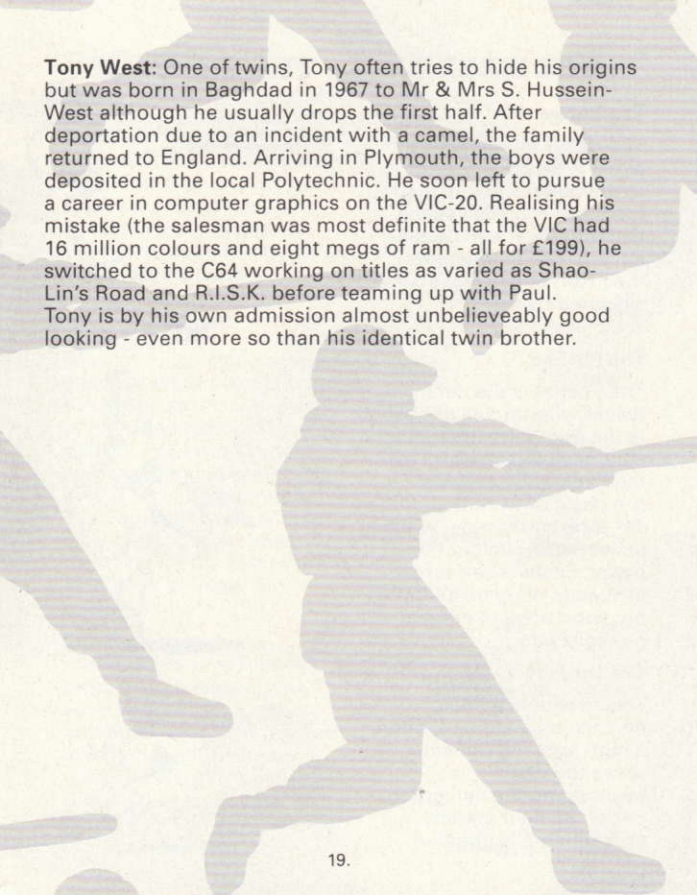
If you want them to run on anyway, press FIRE and then LEFT, RIGHT or UP for any base you wish a runner to carry on running from.

## ★ THE TEAM :

RBI was originally written by Tengen on the PC and C64 and converted to the Spectrum, Amstrad, ST and Amiga by the Kremlin.

**Andy Taylor:** Born on the 23rd of February 1968 to astonished parents in Preston, Lancs. His parents moved to Evesham where Andy caught up with them and stayed there to complete his A levels. During these difficult times (for his parents) Andy wrote several games on the ZX81 (as punishment) and suprised everyone by getting them published. From then on there was no looking back (neck brace) as he moved to programming the Spectrum and later the Amstrad CPC. Andy's hits include his brother, Judge Dredd, Technocano and St Dragon. He's now working hard on Super Space Invaders for the Sega Master System, which he's finding rather difficult as the Sega hasn't got a keyboard!

**Paul Margrave:** Was born in Nottingham in 1965 but not in a coalmine a fact which he now truly regrets. Originally he intended to study advanced flat cap folding, but was persuaded to study something with a longer name - an HND in Electrical and Electronic Engineering at Trent Poly was just the thing. After graduation Paul realised the earning potential of computer games when C&VG published a listing of his for the Atari and paid a whole £10. He jumped on his custom turbo charged C5 and motored down the M1 to London to work on titles such as Bobsleigh (C64), F16 Combat Pilot (ST, PC), Licence to Kill, Cyberball and The Spy Who Loved Me. Paul's hobbies include Guinness and women in leather underwear.

The background of the page features several large, light-colored silhouettes of people in various dynamic poses, suggesting movement or dance. One prominent silhouette in the lower half shows a person in a wide, lunging stance, possibly a dancer or a person in motion. Other smaller silhouettes are scattered throughout the page, creating a sense of a busy, active environment.

**Tony West:** One of twins, Tony often tries to hide his origins but was born in Baghdad in 1967 to Mr & Mrs S. Hussein-West although he usually drops the first half. After deportation due to an incident with a camel, the family returned to England. Arriving in Plymouth, the boys were deposited in the local Polytechnic. He soon left to pursue a career in computer graphics on the VIC-20. Realising his mistake (the salesman was most definite that the VIC had 16 million colours and eight megs of ram - all for £199), he switched to the C64 working on titles as varied as Shao-Lin's Road and R.I.S.K. before teaming up with Paul. Tony is by his own admission almost unbelievably good looking - even more so than his identical twin brother.

# ★ RBI BASEBALL: The Players

## The Batter

The batter takes his turn at bat when he steps up to the batter's box behind the plate. He receives the ball thrown at him by the Pitcher. The batters take their turn to bat in the order assigned by the Team Manager.



## The Pitcher

The Pitcher is the defensive player who throws the ball at the Batter. He must at all times keep one foot on the Pitchers Plate which is a piece of whitened rubber 24" long by 6" wide, when delivering a pitch to the batter. Pitchers can throw at speeds of up to 100mph! but soon tire and have to be replaced.



## The Outfielder

This is your last line of defense on a long hit, often a high jumping outfielder saves the day by stopping the ball going out of the field thereby preventing a Home Run.



## The Catcher

This guy does more than just catch balls which pass the batter, he leads the fielding team and advises the pitcher which pitch to throw from his position behind the plate. Catchers are relied on for their encyclopedic knowledge of the opposition's previous form.



## The Baseman

Most of the exciting action in baseball takes place around the bases as the baseman attempts to catch the ball, usually just as the runner comes sliding, jumping or diving in. In addition the baseman has to be an excellent tactician often throwing on the ball to the next base a runner is making for.



## The Umpire

There are usually four umpires in baseball, one for each base. Sometimes an additional two are provided to watch the foul lines. Umpires will allow some dissent, but the fastest way to an early shower is to over argue a close play.



# ★ OFFICIAL PLAYER ROSTERS

## (BA) BALTIMORE

| BATTERS      |      | HR  | SPD | POS | FULL NAME   |
|--------------|------|-----|-----|-----|-------------|
| PLAYER ABBR. | HAND | AVG |     |     |             |
| Bradley      | R    | 277 | 13  | 0   | Bradley     |
| Moreland     | R    | 278 | 6   | 1   | Moreland    |
| C. Ripken    | R    | 257 | 21  | 5   | C. Ripken   |
| Teffilton    | S    | 258 | 26  | 6   | Teffilton   |
| Orsulak      | L    | 285 | 7   | 7   | Orsulak     |
| Milligan     | R    | 268 | 12  | 8   | Milligan    |
| Dvereaux     | R    | 266 | 8   | 12  | Dvereaux    |
| Worthing     | R    | 247 | 15  | 5   | Worthington |
| Sheets       | L    | 243 | 7   | 5   | Sheets      |
| Finley       | R    | 249 | 2   | 13  | Finley      |
| Melvin       | R    | 241 | 1   | 6   | Melvin      |
| B. Ripken    | R    | 239 | 2   | 5   | B. Ripken   |
| Traber       | L    | 209 | 4   | 6   | Traber      |
| Anderson     | L    | 207 | 4   | 11  | Anderson    |

### PITCHERS

| PLAYER ABBR. | HAND | ERA  | FULL NAME  |
|--------------|------|------|------------|
| Ballard      | L    | 3.43 | Ballard    |
| Mlaczki      | R    | 3.74 | Mlaczki    |
| Schmidt      | R    | 5.69 | Schmidt    |
| Harnisch     | R    | 4.62 | Harnisch   |
| Olson        | R    | 1.69 | Olson      |
| Williamson   | R    | 2.93 | Williamson |
| Holton       | R    | 4.02 | Holton     |
| Bautista     | R    | 5.31 | Bautista   |
| Hickey       | R    | 2.92 | Hickey     |
| Thurmond     | L    | 3.90 | Thurmond   |

## (CA) CALIFORNIA

| BATTERS      |      | HR  | SPD | POS | FULL NAME  |
|--------------|------|-----|-----|-----|------------|
| PLAYER ABBR. | HAND | AVG |     |     |            |
| Washirin     | L    | 273 | 13  | 9   | Washington |
| White        | S    | 245 | 12  | 17  | White      |
| Joyner       | S    | 282 | 16  | 6   | Joyner     |
| Davis        | S    | 271 | 22  | 6   | Davis      |
| Ray          | S    | 289 | 5   | 7   | Ray        |
| Parrish      | R    | 238 | 17  | 5   | Parrish    |
| Schold       | R    | 228 | 4   | 8   | Schofield  |
| Howell       | L    | 228 | 20  | 6   | Howell     |
| Downing      | R    | 283 | 14  | 5   | Downing    |
| Armas        | R    | 257 | 11  | 5   | Armas      |
| Anderson     | R    | 229 | 0   | 6   | Anderson   |
| Holtman      | R    | 212 | 1   | 6   | Holtman    |
| Bichette     | R    | 210 | 3   | 6   | Bichette   |
| Schroeder    | R    | 203 | 6   | 5   | Schroeder  |

### PITCHERS

| PLAYER ABBR. | HAND | ERA  | FULL NAME |
|--------------|------|------|-----------|
| Byleven      | R    | 2.73 | Byleven   |
| Finley       | L    | 2.57 | Finley    |
| McCaskill    | R    | 2.93 | McCaskill |
| Witt         | R    | 4.54 | Witt      |
| Abbott       | R    | 3.92 | Abbott    |
| McClure      | L    | 1.55 | McClure   |
| Minton       | RS   | 2.20 | Minton    |
| Fraser       | R    | 3.24 | Fraser    |
| Harvey       | R    | 3.44 | Harvey    |
| Petry        | R    | 5.47 | Petry     |

# ★ OFFICIAL PLAYER ROSTERS

## (CH) CHICAGO (NATIONAL)

| BATTERS   |   | AVG | HR | SPD | POS | FULL NAME |
|-----------|---|-----|----|-----|-----|-----------|
| Walton    | R | 293 | 5  | 12  | O   | Walton    |
| Grace     | L | 314 | 13 | 9   | I   | Grace     |
| Dawson    | R | 252 | 21 | 7   | O   | Dawson    |
| Sundberg  | R | 290 | 30 | 10  | I   | Sandberg  |
| D. Smith  | L | 324 | 9  | 8   | O   | D. Smith  |
| Dunston   | R | 278 | 9  | 11  | I   | Dunston   |
| Salazar   | R | 282 | 9  | 5   | I   | Salazar   |
| Berryhill | S | 257 | 5  | 4   | C   | Berryhill |
| Ramos     | R | 263 | 1  | 6   | O   | Ramos     |
| McClendon | R | 296 | 12 | 8   | C   | McClendon |
| Webster   | S | 257 | 3  | 10  | I   | Webster   |
| Wilkersn  | S | 244 | 1  | 7   | I   | Wilkersn  |
| Wynne     | L | 243 | 7  | 7   | O   | Wynne     |
| Law       | R | 235 | 7  | 6   | I   | Law       |

| PITCHERS   |   | ERA  | FULL NAME  |
|------------|---|------|------------|
| Maddux     | R | 2.56 | Maddux     |
| Bielecki   | R | 3.14 | Bielecki   |
| Sutcliffe  | R | 3.66 | Sutcliffe  |
| Sanderson  | R | 3.94 | Sanderson  |
| Wilson     | L | 4.20 | Wilson     |
| Kligus     | L | 4.39 | Kligus     |
| Lancaster  | R | 1.36 | Lancaster  |
| Williams   | L | 2.76 | Williams   |
| Pico       | R | 3.77 | Pico       |
| Asenmacher | R | 3.99 | Asenmacher |

## (AT) ATLANTA

| BATTERS  |   | AVG | HR | SPD | POS | FULL NAME |
|----------|---|-----|----|-----|-----|-----------|
| McDowell | L | 304 | 7  | 10  | O   | McDowell  |
| Treadway | R | 277 | 8  | 6   | I   | Treadway  |
| Murphy   | R | 228 | 20 | 6   | O   | Murphy    |
| L. Smith | R | 315 | 21 | 12  | O   | L. Smith  |
| Thomas   | R | 213 | 13 | 6   | I   | Thomas    |
| Blauser  | R | 270 | 12 | 6   | I   | Blauser   |
| Perry    | L | 252 | 4  | 9   | I   | Perry     |
| Davis    | R | 169 | 4  | 4   | C   | Davis     |
| Berroa * | R | 265 | 2  | 6   | O   | Berroa    |
| James    | L | 259 | 1  | 5   | O   | James     |
| Gregg    | L | 243 | 6  | 6   | O   | Gregg     |
| Evans    | R | 207 | 11 | 5   | I   | Evans     |
| Russell  | R | 182 | 2  | 5   | C   | Russell   |
| Gant     | R | 177 | 9  | 8   | I   | Gant      |

| PITCHERS  |   | ERA  | FULL NAME |
|-----------|---|------|-----------|
| Giavine   | L | 3.68 | Giavine   |
| Smoltz    | R | 2.94 | Smoltz    |
| Liliquist | R | 3.97 | Liliquist |
| P. Smith  | R | 4.75 | P. Smith  |
| Echhorn   | R | 4.35 | Echhorn   |
| Clary     | R | 3.15 | Clary     |
| Boever    | R | 3.94 | Boever    |
| Alvarez   | R | 2.86 | Alvarez   |
| Stanton   | R | 1.50 | Stanton   |
| Acker     | R | 2.67 | Acker     |



# ★ OFFICIAL PLAYER ROSTERS

## (BO) BOSTON

| BATTERS      |      | HR  | SPD | POS | FULL NAME |
|--------------|------|-----|-----|-----|-----------|
| PLAYER ABBR. | HAND | AVG |     |     |           |
| Burks        | R    | 303 | 12  | O   | Burks     |
| Boggs        | L    | 330 | 3   | I   | Boggs     |
| Evans        | R    | 285 | 20  | O   | Evans     |
| Esasky       | R    | 277 | 30  | I   | Esasky    |
| Greenwell    | L    | 308 | 14  | O   | Greenwell |
| Reed         | R    | 288 | 3   | I   | Reed      |
| Heep         | R    | 300 | 5   | I   | Heep      |
| Cerone       | R    | 243 | 4   | C   | Cerone    |
| Romine       | R    | 274 | 1   | O   | Romine    |
| Rivera       | R    | 257 | 5   | I   | Rivera    |
| Barrett      | R    | 256 | 1   | I   | Barrett   |
| Rice         | R    | 234 | 3   | O   | Rice      |
| Kutcher      | R    | 225 | 2   | O   | Kutcher   |
| Gedman       | L    | 212 | 4   | C   | Gedman    |

| PITCHERS     |      | HR  | SPD | POS | FULL NAME |
|--------------|------|-----|-----|-----|-----------|
| PLAYER ABBR. | HAND | AVG |     |     |           |
| Clemens      | R    | 313 |     |     | Clemens   |
| Boddicker    | R    | 400 |     |     | Boddicker |
| Dopson       | R    | 399 |     |     | Dopson    |
| Smithson     | R    | 495 |     |     | Smithson  |
| Smith        | R    | 357 |     |     | Smith     |
| Stanley      | R    | 488 |     |     | Stanley   |
| Lamp         | R    | 232 |     |     | Lamp      |
| Murphy       | L    | 274 |     |     | Murphy    |
| Harris       | R    | 257 |     |     | Harris    |
| Price        | R    | 435 |     |     | Price     |

## (CH) CHICAGO (AMERICAN)

| BATTERS      |      | HR  | SPD | POS | FULL NAME |
|--------------|------|-----|-----|-----|-----------|
| PLAYER ABBR. | HAND | AVG |     |     |           |
| Guillen      | L    | 253 | 1   | I   | Guillen   |
| Martinez     | R    | 300 | 5   | I   | Martinez  |
| Fisk         | R    | 293 | 13  | C   | Fisk      |
| Calderon     | R    | 286 | 14  | O   | Calderon  |
| Johnson      | L    | 300 | 0   | O   | Johnson   |
| Gallagher    | R    | 286 | 1   | O   | Gallagher |
| Lyons        | L    | 264 | 2   | I   | Lyons     |
| Fletcher     | R    | 253 | 1   | I   | Fletcher  |
| Williams     | R    | 274 | 3   | I   | Williams  |
| Krkowicz     | R    | 264 | 3   | C   | Krkowicz  |
| Sosa         | R    | 257 | 4   | O   | Sosa      |
| Boston       | L    | 252 | 5   | O   | Boston    |
| Pasqua       | L    | 248 | 11  | O   | Pasqua    |
| Walker       | L    | 210 | 5   | I   | Walker    |

| PITCHERS     |      | HR  | SPD | POS | FULL NAME |
|--------------|------|-----|-----|-----|-----------|
| PLAYER ABBR. | HAND | AVG |     |     |           |
| Perez        | R    | 501 |     |     | Perez     |
| King         | R    | 339 |     |     | King      |
| Hibbard      | L    | 321 |     |     | Hibbard   |
| Dotson       | R    | 446 |     |     | Dotson    |
| Patterson    | R    | 452 |     |     | Patterson |
| Hillegas     | R    | 474 |     |     | Hillegas  |
| Long         | R    | 392 |     |     | Long      |
| Pall         | R    | 331 |     |     | Pall      |
| Thigpen      | R    | 376 |     |     | Thigpen   |
| Rosenberg    | R    | 494 |     |     | Rosenberg |

# ★ OFFICIAL PLAYER ROSTERS

## (MT) MONTREAL

## (CI) CINCINNATI

| BATTERS      |      |      |    |     |     |             | BATTERS      |      |      |    |     |     |            |
|--------------|------|------|----|-----|-----|-------------|--------------|------|------|----|-----|-----|------------|
| PLAYER ABBR. | HAND | AVG  | HR | SPD | POS | FULL NAME   | PLAYER ABBR. | HAND | AVG  | HR | SPD | POS | FULL NAME  |
| Raines       | R    | .286 | 9  | 16  | O   | Raines      | Larkin       | R    | .342 | 4  | 9   | I   | Larkin     |
| Wallach      | R    | .277 | 13 | 6   | I   | Wallach     | O'Neill      | L    | .276 | 15 | 12  | O   | O'Neill    |
| Brooks       | R    | .268 | 14 | 7   | O   | Brooks      | Benzinger    | S    | .245 | 17 | 6   | I   | Benzinger  |
| Galaraga     | R    | .257 | 23 | 9   | I   | Balarraga   | Davis        | R    | .281 | 34 | 12  | O   | Davis      |
| D Martnz     | L    | .274 | 3  | 12  | O   | Da Martinez | Roomes       | R    | .263 | 7  | 9   | O   | Roomes     |
| Srtlovena    | R    | .250 | 5  | 5   | C   | Sartlovena  | Griffey      | R    | .263 | 8  | 6   | C   | Griffey    |
| Owen         | S    | .233 | 6  | 6   | I   | Owen        | Sabo         | R    | .260 | 6  | 9   | I   | Sabo       |
| Foley        | L    | .229 | 7  | 5   | I   | Foley       | Oester       | S    | .246 | 1  | 4   | I   | Oester     |
| W Johnson    | S    | .272 | 2  | 6   | I   | W Johnson   | Winningham   | L    | .251 | 3  | 9   | O   | Winningham |
| Garcia       | R    | .271 | 3  | 6   | I   | Garcia      | Duncan       | S    | .248 | 3  | 8   | I   | Duncan     |
| Hudler       | R    | .245 | 6  | 12  | I   | Hudler      | Quinones     | S    | .244 | 12 | 5   | I   | Quinones   |
| Fitzgird     | R    | .238 | 7  | 6   | C   | Fitzgerald  | Collins      | S    | .286 | 0  | 7   | O   | Collins    |
| Aldrete      | L    | .221 | 1  | 5   | O   | Aldrete     | Reed         | L    | .223 | 3  | 5   | C   | Reed       |
| Nixon        | S    | .217 | 0  | 16  | O   | Nixon       | Youngblood   | R    | .212 | 3  | 6   | O   | Youngblood |

| PITCHERS     |      |      |             |              |      |      | PITCHERS     |      |      |           |              |      |      |           |
|--------------|------|------|-------------|--------------|------|------|--------------|------|------|-----------|--------------|------|------|-----------|
| PLAYER ABBR. | HAND | ERA  | FULL NAME   | PLAYER ABBR. | HAND | ERA  | PLAYER ABBR. | HAND | ERA  | FULL NAME | PLAYER ABBR. | HAND | ERA  | FULL NAME |
| DeMartnz     | R    | 3.18 | De Martinez | Browning     | L    | 3.39 | Browning     | R    | 3.63 | Mahler    | Mahler       | R    | 3.52 | Leary     |
| B Smith      | R    | 2.84 | B. Smith    | Mahler       | R    | 3.52 | Leary        | R    | 2.84 | Rijo      | Rijo         | R    | 2.09 | Dibble    |
| Gross        | R    | 4.38 | Gross       | Leary        | R    | 2.84 | Rijo         | R    | 2.93 | Charlton  | Charlton     | L    | 5.60 | Jackson   |
| Perez        | R    | 3.31 | Perez       | Dibble       | R    | 2.09 | Dibble       | R    | 3.12 | Franco    | Franco       | L    | 4.49 | Scudder   |
| Langston     | R    | 2.18 | Langston    | Charlton     | L    | 5.60 | Jackson      | L    | 3.75 | Brints    | Brints       | R    |      |           |
| Burke        | R    | 2.55 | Burke       | Jackson      | L    | 3.12 | Franco       | R    |      |           |              |      |      |           |
| Burke        | R    | 5.77 | Heseth      | Frey         | R    | 4.68 | McGaffigan   | R    |      |           |              |      |      |           |
| Heskeith     | L    | 5.48 | Frey        | McGaffigan   | R    | 3.49 | Z. Smith     | R    |      |           |              |      |      |           |
| Frey         | R    | 4.68 | McGaffigan  | Z. Smith     | R    |      |              |      |      |           |              |      |      |           |
| McGaffigan   | R    | 3.49 | Z. Smith    |              |      |      |              |      |      |           |              |      |      |           |

# ★ OFFICIAL PLAYER ROSTERS

## (CL) CLEVELAND

### BATTERS

| PLAYER ABBR. | HAND | AVG  | HR | SPD | POS | FULL NAME |
|--------------|------|------|----|-----|-----|-----------|
| Browne       | S    | .299 | 5  | 9   | I   | Browne    |
| Jacoby       | R    | .272 | 13 | 6   | I   | Jacoby    |
| Snyder       | R    | .215 | 18 | 7   | O   | Snyder    |
| Carter       | R    | .243 | 35 | 9   | O   | Carter    |
| O'Brien      | L    | .259 | 12 | 6   | I   | O'Brien   |
| Fermin       | R    | .238 | 0  | 6   | I   | Fermin    |
| Clark        | L    | .237 | 8  | 5   | O   | Clark     |
| Allanson     | R    | .232 | 3  | 6   | C   | Allanson  |
| James        | R    | .306 | 4  | 6   | O   | James     |
| Kommink      | R    | .237 | 8  | 10  | O   | Kommink   |
| Skinner      | R    | .230 | 1  | 5   | C   | Skinner   |
| Belle        | R    | .225 | 7  | 6   | I   | Belle     |
| McDowell     | L    | .222 | 3  | 11  | O   | McDowell  |
| Aguayo       | R    | .175 | 1  | 5   | I   | Aguayo    |

### PITCHERS

| PLAYER ABBR. | HAND | ERA  | FULL NAME |
|--------------|------|------|-----------|
| Swindell     | L    | 3.37 | Swindell  |
| Candiotti    | R    | 3.10 | Candiotti |
| Black        | L    | 3.36 | Black     |
| Farrall      | R    | 3.63 | Farrall   |
| D.Jones      | R    | 2.34 | D. Jones  |
| Yet          | R    | 5.00 | Yet       |
| Bailes       | L    | 4.28 | Bailes    |
| Orosco       | LS   | 2.08 | Orosco    |
| Olin         | R    | 3.75 | Olin      |
| Atherton     | R    | 4.15 | Atherton  |

## (KC) KANSAS CITY

### BATTERS

| PLAYER ABBR. | HAND | AVG  | HR | SPD | POS | FULL NAME  |
|--------------|------|------|----|-----|-----|------------|
| Eisenreich   | L    | .293 | 9  | 13  | O   | Eisenreich |
| Brett        | L    | .262 | 12 | 9   | I   | Brett      |
| Tantabull    | R    | .268 | 18 | 6   | O   | Tantabull  |
| Jackson      | R    | .256 | 32 | 13  | O   | Jackson    |
| Stilwell     | S    | .261 | 7  | 8   | I   | Stilwell   |
| Seitzer      | R    | .281 | 4  | 10  | I   | Seitzer    |
| Boone        | R    | .274 | 1  | 6   | C   | Boone      |
| White        | R    | .256 | 2  | 6   | I   | White      |
| Tabler       | R    | .259 | 2  | 6   | O   | Tabler     |
| Wilson       | S    | .253 | 3  | 12  | O   | Wilson     |
| Wellman      | R    | .230 | 2  | 6   | I   | Wellman    |
| MacLain      | R    | .223 | 2  | 5   | C   | MacLain    |
| Buckner      | L    | .216 | 1  | 6   | I   | Buckner    |
| Thurman      | R    | .195 | 0  | 14  | O   | Thurman    |

### PITCHERS

| PLAYER ABBR. | HAND | ERA  | FULL NAME   |
|--------------|------|------|-------------|
| Sabershagen  | R    | 2.16 | Sabershagen |
| Gubicza      | R    | 3.04 | Gubicza     |
| Aguino       | R    | 3.50 | Aguino      |
| Lebrandt     | L    | 5.14 | Lebrandt    |
| Gordon       | R    | 3.64 | Gordon      |
| Montgomery   | R    | 1.37 | Montgomery  |
| Leach        | R    | 4.15 | Leach       |
| Crawford     | R    | 2.83 | Crawford    |
| Luecken      | R    | 3.42 | Luecken     |
| Farr         | R    | 4.12 | Farr        |

# ★ OFFICIAL PLAYER ROSTERS

## (NY) NEW YORK (NATIONAL)

| BATTERS      |      | BATTERS |    |     |     |              |              |      |     |    |     |     |           |
|--------------|------|---------|----|-----|-----|--------------|--------------|------|-----|----|-----|-----|-----------|
| PLAYER ABBR. | HAND | AVG     | HR | SPD | POS | FULL NAME    | PLAYER ABBR. | HAND | AVG | HR | SPD | POS | FULL NAME |
| McRynolds    | R    | 272     | 22 | 10  | O   | McReynolds   | Puhl         | L    | 271 | 0  | 8   | O   | Puhl      |
| Jeffries     | S    | 258     | 12 | 12  | I   | Jeffries     | Biggio       | R    | 257 | 13 | 13  | C   | Biggio    |
| Strawberry   | L    | 225     | 29 | 9   | I   | Strawberry   | Wilson       | R    | 266 | 11 | 5   | O   | Wilson    |
| Johnson      | S    | 287     | 36 | 5   | I   | Johnson      | Davis        | R    | 269 | 34 | 6   | I   | Davis     |
| Samuel       | R    | 235     | 11 | 16  | O   | Samuel       | Caminiti     | S    | 255 | 10 | 6   | I   | Caminiti  |
| Magadan      | L    | 286     | 4  | 5   | I   | Magadan      | Ramirez      | R    | 246 | 6  | 5   | I   | Ramirez   |
| Lyons        | R    | 247     | 3  | 4   | C   | Lyons        | Young        | S    | 233 | 0  | 15  | O   | Young     |
| Elster       | R    | 231     | 10 | 6   | I   | Elster       | Doran        | S    | 219 | 8  | 12  | I   | Doran     |
| Carreon      | R    | 308     | 6  | 5   | O   | Carreon      | Bass         | S    | 300 | 5  | 9   | O   | Bass      |
| Sasser       | L    | 291     | 1  | 5   | C   | Sasser       | Trevino      | R    | 290 | 2  | 5   | O   | Trevino   |
| Teufel       | R    | 256     | 2  | 5   | I   | Teufel       | Spillman     | R    | 278 | 0  | 6   | O   | Spillman  |
| Hernandez    | L    | 233     | 4  | 4   | I   | K. Hernandez | Yelding      | R    | 233 | 0  | 10  | I   | Yelding   |
| Miller       | R    | 231     | 1  | 7   | I   | Miller       | Reynolds     | L    | 201 | 2  | 6   | I   | Reynolds  |
| Wilson       | S    | 205     | 3  | 7   | O   | Wilson       | Gross        | R    | 200 | 0  | 5   | C   | Gross     |

### PITCHERS

| PLAYER ABBR. | HAND | ERA  | FULL NAME |
|--------------|------|------|-----------|
| Fernandez    | L    | 2.83 | Fernandez |
| Cone         | R    | 3.52 | Cone      |
| Darling      | R    | 3.52 | Darling   |
| Ojeda        | L    | 3.47 | Ojeda     |
| Gooden       | R    | 2.89 | Gooden    |
| Myers        | L    | 2.35 | Myers     |
| Aguilera     | R    | 2.34 | Aguilera  |
| Musselman    | R    | 3.08 | Musselman |
| Innis        | R    | 3.18 | Innis     |
| Aase         | R    | 3.94 | Aase      |

## (HO) HOUSTON

| BATTERS      |      | BATTERS |    |     |     |           |              |      |      |           |      |     |           |
|--------------|------|---------|----|-----|-----|-----------|--------------|------|------|-----------|------|-----|-----------|
| PLAYER ABBR. | HAND | AVG     | HR | SPD | POS | FULL NAME | PLAYER ABBR. | HAND | AVG  | HR        | SPD  | POS | FULL NAME |
| Puhl         | L    | 271     | 0  | 8   | O   | Puhl      | Scott        | R    | 3.10 | Scott     | 3.10 |     | Scott     |
| Biggio       | R    | 257     | 13 | 13  | C   | Biggio    | Deshaies     | L    | 2.91 | Deshaies  | 2.91 |     | Deshaies  |
| Wilson       | R    | 266     | 11 | 5   | O   | Wilson    | Portugal     | R    | 2.75 | Portugal  | 2.75 |     | Portugal  |
| Davis        | R    | 269     | 34 | 6   | I   | Davis     | Clancy       | R    | 5.08 | Clancy    | 5.08 |     | Clancy    |
| Caminiti     | S    | 255     | 10 | 6   | I   | Caminiti  | Darwin       | R    | 2.36 | Darwin    | 2.36 |     | Darwin    |
| Ramirez      | R    | 246     | 6  | 5   | I   | Ramirez   | Anderson     | R    | 1.54 | Anderson  | 1.54 |     | Anderson  |
| Young        | S    | 233     | 0  | 15  | O   | Young     | Agosto       | L    | 2.93 | Agosto    | 2.93 |     | Agosto    |
| Doran        | S    | 219     | 8  | 12  | I   | Doran     | Schatzler    | R    | 4.45 | Schatzler | 4.45 |     | Schatzler |
| Bass         | S    | 300     | 5  | 9   | O   | Bass      | Smith        | R    | 2.64 | Smith     | 2.64 |     | Smith     |
| Trevino      | R    | 290     | 2  | 5   | O   | Trevino   | Forsch       | R    | 5.32 | Forsch    | 5.32 |     | Forsch    |
| Spillman     | R    | 278     | 0  | 6   | O   | Spillman  |              |      |      |           |      |     |           |
| Yelding      | R    | 233     | 0  | 10  | I   | Yelding   |              |      |      |           |      |     |           |
| Reynolds     | L    | 201     | 2  | 6   | I   | Reynolds  |              |      |      |           |      |     |           |
| Gross        | R    | 200     | 0  | 5   | C   | Gross     |              |      |      |           |      |     |           |

### PITCHERS

| PLAYER ABBR. | HAND | ERA  | FULL NAME |
|--------------|------|------|-----------|
| Scott        | R    | 3.10 | Scott     |
| Deshaies     | L    | 2.91 | Deshaies  |
| Portugal     | R    | 2.75 | Portugal  |
| Clancy       | R    | 5.08 | Clancy    |
| Darwin       | R    | 2.36 | Darwin    |
| Anderson     | R    | 1.54 | Anderson  |
| Agosto       | L    | 2.93 | Agosto    |
| Schatzler    | R    | 4.45 | Schatzler |
| Smith        | R    | 2.64 | Smith     |
| Forsch       | R    | 5.32 | Forsch    |

# ★ OFFICIAL PLAYER ROSTERS

## (DT) DETROIT

| BATTERS | PLAYER ABBR. | HAND | AVG | HR | SPD | POS | FULL NAME   |
|---------|--------------|------|-----|----|-----|-----|-------------|
|         | Pettis       | S    | 257 | 1  | 16  | O   | Pettis      |
|         | Bergman      | L    | 268 | 7  | 5   | I   | Bergman     |
|         | Heath        | R    | 263 | 10 | 7   | C   | Heath       |
|         | Whitaker     | L    | 251 | 28 | 7   | I   | Whitaker    |
|         | Ward         | R    | 253 | 9  | 6   | O   | Ward        |
|         | Trammell     | R    | 243 | 5  | 9   | I   | Trammell    |
|         | Jones        | R    | 259 | 3  | 6   | I   | Jones       |
|         | Lynn         | L    | 241 | 11 | 5   | O   | Lynn        |
|         | Lemon        | R    | 237 | 7  | 6   | O   | Lemon       |
|         | Nokes        | L    | 250 | 9  | 4   | C   | Nokes       |
|         | Schu         | R    | 214 | 7  | 5   | I   | Schu        |
|         | Strange      | R    | 214 | 1  | 7   | O   | Strange     |
|         | K Williams   | R    | 205 | 6  | 9   | O   | K. Williams |
|         | Brumley      | S    | 198 | 1  | 9   | I   | Brumley     |

### PITCHERS

| PLAYER ABBR. | HAND | ERA  | FULL NAME   |
|--------------|------|------|-------------|
| Tanana       | L    | 3.58 | Tanana      |
| Morris       | R    | 4.86 | Morris      |
| Alexandr     | R    | 4.44 | Alexander   |
| Robinson     | R    | 4.73 | Robinson    |
| Henneman     | R    | 3.70 | Henneman    |
| Gibson       | L    | 4.64 | Gibson      |
| Williams     | RS   | 3.64 | F. Williams |
| Nunez        | R    | 4.17 | Nunez       |
| Hernandez    | L    | 5.74 | Hernandez   |
| Havens       | R    | 5.00 | Havens      |

## (MN) MINNESOTA

| BATTERS | PLAYER ABBR. | HAND | AVG | HR | SPD | POS | FULL NAME |
|---------|--------------|------|-----|----|-----|-----|-----------|
|         | Gladden      | R    | 295 | 8  | 13  | O   | Gladden   |
|         | Puckett      | R    | 339 | 9  | 8   | O   | Puckett   |
|         | Gaetti       | R    | 251 | 19 | 8   | I   | Gaetti    |
|         | Hrbek        | L    | 272 | 25 | 6   | I   | Hrbek     |
|         | Harper       | R    | 325 | 8  | 5   | C   | Harper    |
|         | Gagne        | R    | 272 | 9  | 9   | I   | Gagne     |
|         | Larkin       | S    | 267 | 6  | 7   | I   | Larkin    |
|         | Bush         | L    | 263 | 14 | 7   | O   | Bush      |
|         | Baker        | S    | 295 | 0  | 6   | I   | Baker     |
|         | Newman       | S    | 233 | 0  | 9   | I   | Newman    |
|         | Moses        | S    | 281 | 1  | 9   | O   | Moses     |
|         | Castillo     | R    | 257 | 8  | 6   | O   | Castillo  |
|         | Backman      | S    | 231 | 1  | 5   | I   | Backman   |
|         | Laudner      | R    | 222 | 6  | 6   | C   | Laudner   |

### PITCHERS

| PLAYER ABBR. | HAND | ERA  | FULL NAME |
|--------------|------|------|-----------|
| Anderson     | L    | 3.80 | Anderson  |
| Smith        | R    | 3.92 | Smith     |
| Viola        | L    | 3.79 | Viola     |
| Aguilera     | R    | 3.21 | Aguilera  |
| Berenguer    | R    | 3.48 | Berenguer |
| Reardon      | R    | 4.07 | Reardon   |
| Rawley       | L    | 5.21 | Rawley    |
| Dyer         | R    | 4.82 | Dyer      |
| Wayne        | L    | 3.30 | Wayne     |
| Gonzalez     | R    | 4.66 | Gonzalez  |

# ★ OFFICIAL PLAYER ROSTERS

## (PH) PHILADELPHIA

| BATTERS      |      |     |    |     |     |           |  |  |
|--------------|------|-----|----|-----|-----|-----------|--|--|
| PLAYER ABBR. | HAND | AVG | HR | SPD | POS | FULL NAME |  |  |
| Dykstra      | L    | 237 | 7  | 14  | 0   | Dykstra   |  |  |
| Herr         | S    | 287 | 2  | 9   | 1   | Herr      |  |  |
| Thon         | R    | 271 | 15 | 7   | 1   | Thon      |  |  |
| V Hayes      | L    | 259 | 26 | 13  | 0   | W Hayes   |  |  |
| Kruk         | L    | 300 | 8  | 6   | 0   | Kruk      |  |  |
| Jordan       | R    | 285 | 12 | 6   | 1   | Jordan    |  |  |
| C Hayes      | R    | 257 | 8  | 6   | 1   | C Hayes   |  |  |
| Daulton      | L    | 201 | 8  | 6   | C   | Daulton   |  |  |
| Ready        | R    | 264 | 8  | 6   | 1   | Ready     |  |  |
| Lake         | R    | 252 | 2  | 5   | C   | Lake      |  |  |
| Jeltz        | S    | 243 | 4  | 7   | 1   | Jeltz     |  |  |
| Ford         | L    | 218 | 1  | 6   | 0   | Ford      |  |  |
| Murphy       | R    | 218 | 9  | 5   | 1   | Murphy    |  |  |
| Demier       | R    | 171 | 1  | 6   | 0   | Demier    |  |  |

### PITCHERS

| PLAYER ABBR. | HAND | ERA  | FULL NAME  |
|--------------|------|------|------------|
| Howell       | R    | 3.44 | Howell     |
| Cook         | R    | 3.72 | Cook       |
| Ruffin       | L    | 4.44 | Ruffin     |
| Mulholland   | R    | 4.92 | Mulholland |
| Parrett      | R    | 2.98 | Parrett    |
| McDowell     | RS   | 1.96 | McDowell   |
| Harris       | R    | 3.58 | Harris     |
| Frothwith    | R    | 3.59 | Frothwith  |
| McWilliams   | R    | 4.10 | McWilliams |
| Carman       | L    | 5.24 | Carman     |

## (LA) LOS ANGELES

| BATTERS      |      |     |    |     |     |           |  |  |
|--------------|------|-----|----|-----|-----|-----------|--|--|
| PLAYER ABBR. | HAND | AVG | HR | SPD | POS | FULL NAME |  |  |
| Randolph     | R    | 282 | 2  | 7   | 1   | Randolph  |  |  |
| Gonzalez     | R    | 268 | 3  | 8   | 0   | Gonzalez  |  |  |
| Marshall     | R    | 260 | 11 | 5   | 0   | Marshall  |  |  |
| Murray       | S    | 247 | 20 | 7   | 1   | Murray    |  |  |
| Hamilton     | R    | 245 | 12 | 4   | 1   | Hamilton  |  |  |
| Sciocchia    | L    | 250 | 10 | 5   | C   | Sciocchia |  |  |
| Griffin      | S    | 247 | 0  | 9   | 1   | Griffin   |  |  |
| Harris       | R    | 236 | 3  | 9   | 0   | Harris    |  |  |
| Hatcher      | R    | 295 | 2  | 6   | 1   | Hatcher   |  |  |
| Stubbs       | L    | 291 | 4  | 6   | 1   | Stubbs    |  |  |
| Anderson     | R    | 229 | 1  | 6   | 1   | Anderson  |  |  |
| Gibson       | L    | 213 | 9  | 9   | 0   | Gibson    |  |  |
| Shelby       | S    | 183 | 1  | 10  | 0   | Shelby    |  |  |
| Dempsey      | R    | 179 | 4  | 5   | C   | Dempsey   |  |  |

### PITCHERS

| PLAYER ABBR. | HAND | ERA  | FULL NAME |
|--------------|------|------|-----------|
| Belcher      | R    | 2.82 | Belcher   |
| Hershiser    | R    | 2.31 | Hershiser |
| Vinzuela     | L    | 3.43 | Valezuela |
| Morgan       | R    | 2.53 | Morgan    |
| Martinez     | R    | 3.19 | Martinez  |
| Howell       | R    | 1.58 | Howell    |
| Pera         | R    | 2.13 | Pera      |
| Wetland      | R    | 3.77 | Wetland   |
| Searge       | L    | 3.53 | Searge    |
| Crews        | R    | 3.21 | Crews     |

# ★ OFFICIAL PLAYER ROSTERS

## (MW) MILWAUKEE

| BATTERS      |      |     |    |     |     |           |
|--------------|------|-----|----|-----|-----|-----------|
| PLAYER ABBR. | HAND | AVG | HR | SPD | POS | FULL NAME |
| Molitor      | R    | 315 | 11 | 13  | I   | Molitor   |
| Gantner      | L    | 274 | 0  | 12  | I   | Gantner   |
| Braggs       | R    | 247 | 15 | 10  | O   | Braggs    |
| Yount        | R    | 318 | 21 | 11  | O   | Yount     |
| Brook        | L    | 265 | 12 | 6   | I   | Brook     |
| Spiers       | R    | 255 | 4  | 9   | O   | Spiers    |
| Surhoff      | L    | 248 | 5  | 9   | C   | Surhoff   |
| Sheffield    | R    | 247 | 5  | 8   | I   | Sheffield |
| Deer         | R    | 210 | 26 | 6   | O   | Deer      |
| Felder       | S    | 241 | 3  | 12  | O   | Felder    |
| O'Brien      | R    | 234 | 6  | 5   | C   | O'Brien   |
| Francona     | R    | 232 | 3  | 6   | O   | Francona  |
| Romero       | R    | 209 | 0  | 6   | I   | Romero    |
| Polidor      | R    | 194 | 0  | 6   | I   | Polidor   |

| PITCHERS     |      |      |           |      |           |  |
|--------------|------|------|-----------|------|-----------|--|
| PLAYER ABBR. | HAND | ERA  | FULL NAME | ERA  | FULL NAME |  |
| Bosio        | R    | 2.95 | Bosio     | 3.32 | Stewart   |  |
| August       | R    | 5.31 | August    | 2.61 | Moore     |  |
| Higuera      | R    | 3.46 | Higuera   | 4.36 | Davis     |  |
| Reuss        | R    | 5.13 | Reuss     | 3.00 | Welch     |  |
| Crim         | R    | 2.83 | Crim      | 2.24 | Burns     |  |
| Knudson      | R    | 3.35 | Knudson   | 1.56 | Eckersly  |  |
| Navarro      | R    | 3.12 | Navarro   | 3.73 | C. Young  |  |
| Plesac       | L    | 2.35 | Plesac    | 3.26 | Nelson    |  |
| Fossas       | R    | 3.54 | Fossas    | 2.35 | Honeycut  |  |
| Krueger      | R    | 3.84 | Krueger   | 1.88 | Corsi     |  |

## (OK) OAKLAND

| BATTERS      |      |     |    |     |     |              |
|--------------|------|-----|----|-----|-----|--------------|
| PLAYER ABBR. | HAND | AVG | HR | SPD | POS | FULL NAME    |
| R. Hinds     | R    | 274 | 12 | 20  | O   | R. Henderson |
| Lansford     | R    | 336 | 2  | 15  | I   | Lansford     |
| Cansaco      | R    | 269 | 17 | 7   | O   | Cansaco      |
| McGwire      | R    | 231 | 33 | 5   | I   | McGwire      |
| Steinbach    | R    | 273 | 7  | 4   | C   | Steinbach    |
| Parker       | L    | 264 | 22 | 3   | O   | Parker       |
| Phillips     | S    | 262 | 4  | 6   | I   | Phillips     |
| Gallego      | R    | 252 | 3  | 7   | I   | Gallego      |
| D. Hinds     | R    | 250 | 15 | 7   | O   | D. Henderson |
| Javier       | S    | 248 | 1  | 9   | O   | Javier       |
| Phelps       | L    | 242 | 7  | 5   | I   | Phelps       |
| Weiss        | S    | 233 | 3  | 8   | I   | Weiss        |
| Blankship    | R    | 232 | 1  | 9   | I   | Blankship    |
| Hassey       | L    | 228 | 5  | 6   | C   | Hassey       |

| PITCHERS     |      |      |           |      |           |  |
|--------------|------|------|-----------|------|-----------|--|
| PLAYER ABBR. | HAND | ERA  | FULL NAME | ERA  | FULL NAME |  |
| Stewart      | R    | 3.32 | Stewart   | 3.32 | Stewart   |  |
| Moore        | R    | 2.61 | Moore     | 2.61 | Moore     |  |
| Davis        | R    | 4.36 | Davis     | 4.36 | Davis     |  |
| Welch        | R    | 3.00 | Welch     | 3.00 | Welch     |  |
| Burns        | R    | 2.24 | Burns     | 2.24 | Burns     |  |
| Eckersly     | RS   | 1.56 | Eckersly  | 1.56 | Eckersly  |  |
| C. Young     | L    | 3.73 | C. Young  | 3.73 | C. Young  |  |
| Nelson       | R    | 3.26 | Nelson    | 3.26 | Nelson    |  |
| Honeycut     | L    | 2.35 | Honeycut  | 2.35 | Honeycut  |  |
| Corsi        | R    | 1.88 | Corsi     | 1.88 | Corsi     |  |

# ★ OFFICIAL PLAYER ROSTERS

## (PI) PITTSBURGH

| BATTERS      |      | BATTERS |    |     |     |           |              |      |      |    |     |     |           |
|--------------|------|---------|----|-----|-----|-----------|--------------|------|------|----|-----|-----|-----------|
| PLAYER ABBR. | HAND | AVG     | HR | SPD | POS | FULL NAME | PLAYER ABBR. | HAND | AVG  | HR | SPD | POS | FULL NAME |
| Reynolds     | S    | .270    | 6  | 12  | 0   | Reynolds  | Gwynn        | L    | .336 | 4  | 16  | 0   | Gwynn     |
| Bell         | R    | .258    | 2  | 6   | 1   | Bell      | Roberts      | S    | .301 | 3  | 12  | 1   | Roberts   |
| Bonds        | L    | .248    | 19 | 14  | 0   | Bonds     | Santiago     | R    | .236 | 16 | 9   | C   | Santiago  |
| Bonilla      | S    | .281    | 24 | 8   | 1   | Bonilla   | J.Clark      | R    | .242 | 26 | 7   | J   | Ja. Clark |
| Van Slyk     | L    | .237    | 9  | 10  | 0   | Van Slyke | R.Alomar     | S    | .295 | 7  | 16  | 1   | R. Alomar |
| Lind         | R    | .232    | 2  | 10  | 1   | Lind      | Templetn     | S    | .255 | 6  | 5   | 1   | Templeton |
| Hatcher      | R    | .231    | 4  | 12  | 1   | Hatcher   | James        | L    | .243 | 13 | 6   | 0   | James     |
| Ortiz        | R    | .217    | 1  | 4   | C   | Ortiz     | Martinez     | R    | .221 | 6  | 4   | 0   | Martinez  |
| LaValier     | L    | .316    | 2  | 6   | C   | LaValier  | Flannery     | L    | .231 | 0  | 6   | 1   | Flannery  |
| Redus        | R    | .283    | 6  | 13  | 0   | Redus     | Jackson      | R    | .218 | 4  | 6   | 0   | Jackson   |
| Dstefano     | L    | .247    | 2  | 4   | 1   | Dstefano  | Pglaturo     | R    | .196 | 3  | 6   | 1   | Paglaturo |
| Canglosi     | S    | .219    | 0  | 10  | 0   | Canglosi  | Nelson       | L    | .195 | 3  | 6   | 1   | Nelson    |
| Quinones     | S    | .209    | 3  | 5   | 1   | Quinones  | Parent       | R    | .191 | 7  | 6   | C   | Parent    |
| King         | R    | .195    | 5  | 6   | 1   | King      | Abner        | R    | .176 | 2  | 6   | 0   | Abner     |

### PITCHERS

| PLAYER ABBR. | HAND | ERA  | FULL NAME |
|--------------|------|------|-----------|
| Drabek       | R    | 2.80 | Drabek    |
| Smiley       | L    | 2.81 | Smiley    |
| Walk         | R    | 4.41 | Walk      |
| Robinson     | R    | 4.58 | Robinson  |
| Heaton       | R    | 3.05 | Heaton    |
| Kramer       | R    | 3.96 | Kramer    |
| Kipper       | R    | 2.93 | Kipper    |
| Landrum      | L    | 1.67 | Landrum   |
| Bair         | R    | 2.27 | Bair      |
| Reed         | R    | 5.60 | Reed      |

## (SD) SAN DIEGO

### BATTERS

| PLAYER ABBR. | HAND | AVG  | HR | SPD | POS | FULL NAME |
|--------------|------|------|----|-----|-----|-----------|
| Gwynn        | L    | .336 | 4  | 16  | 0   | Gwynn     |
| Roberts      | S    | .301 | 3  | 12  | 1   | Roberts   |
| Santiago     | R    | .236 | 16 | 9   | C   | Santiago  |
| J.Clark      | R    | .242 | 26 | 7   | J   | Ja. Clark |
| R.Alomar     | S    | .295 | 7  | 16  | 1   | R. Alomar |
| Templetn     | S    | .255 | 6  | 5   | 1   | Templeton |
| James        | L    | .243 | 13 | 6   | 0   | James     |
| Martinez     | R    | .221 | 6  | 4   | 0   | Martinez  |
| Flannery     | L    | .231 | 0  | 6   | 1   | Flannery  |
| Jackson      | R    | .218 | 4  | 6   | 0   | Jackson   |
| Pglaturo     | R    | .196 | 3  | 6   | 1   | Paglaturo |
| Nelson       | L    | .195 | 3  | 6   | 1   | Nelson    |
| Parent       | R    | .191 | 7  | 6   | C   | Parent    |
| Abner        | R    | .176 | 2  | 6   | 0   | Abner     |

### PITCHERS

| PLAYER ABBR. | HAND | ERA  | FULL NAME |
|--------------|------|------|-----------|
| Whitson      | R    | 2.66 | Whitson   |
| Hurst        | L    | 2.69 | Hurst     |
| Rasmussen    | R    | 4.26 | Rasmussen |
| Terrell      | L    | 4.01 | Terrell   |
| Grant        | R    | 3.33 | Grant     |
| Harris       | R    | 2.80 | Harris    |
| M.Davis      | L    | 1.85 | M. Davis  |
| Show         | R    | 4.23 | Show      |
| Schraich     | R    | 3.51 | Schraich  |
| Benes        | R    | 3.51 | Benes     |



# ★ OFFICIAL PLAYER ROSTERS

## (SE) SEATTLE

| BATTERS      |      | BATTERS |    |     |     |           |
|--------------|------|---------|----|-----|-----|-----------|
| PLAYER ABBR. | HAND | AVG     | HR | SPD | POS | FULL NAME |
| Reynolds     | S    | 300     | 0  | 13  | I   | Reynolds  |
| Griffey      | R    | 264     | 16 | 10  | I   | Griffey   |
| Davis        | L    | 305     | 21 | 5   | I   | Davis     |
| Leonard      | R    | 254     | 24 | 6   | O   | Leonard   |
| Buhrer       | R    | 275     | 9  | 6   | O   | Buhrer    |
| Bradley      | L    | 274     | 3  | 6   | C   | Bradley   |
| Briley       | L    | 266     | 13 | 9   | O   | Briley    |
| Presley      | R    | 236     | 12 | 4   | I   | Presley   |
| Coles        | R    | 252     | 10 | 7   | O   | Coles     |
| Cotto        | R    | 264     | 9  | 9   | O   | Cotto     |
| Martinez     | R    | 240     | 2  | 6   | I   | Martinez  |
| Valle        | R    | 237     | 7  | 6   | C   | Valle     |
| Cochrane     | R    | 235     | 3  | 5   | I   | Cochrane  |
| Vizquel      | R    | 220     | 1  | 5   | O   | Vizquel   |

| PITCHERS     |      | PITCHERS |           |  |  |  |
|--------------|------|----------|-----------|--|--|--|
| PLAYER ABBR. | HAND | ERA      | FULL NAME |  |  |  |
| Bankhead     | R    | 3.34     | Bankhead  |  |  |  |
| Hanson       | R    | 3.18     | Hanson    |  |  |  |
| Holman       | R    | 3.44     | Holman    |  |  |  |
| Johnson      | R    | 4.40     | Johnson   |  |  |  |
| Swift        | R    | 4.43     | Swift     |  |  |  |
| Reed         | R    | 3.19     | Reed      |  |  |  |
| Jackson      | R    | 3.17     | Jackson   |  |  |  |
| Powell       | L    | 5.00     | Powell    |  |  |  |
| Scholler     | R    | 2.81     | Scholler  |  |  |  |
| Trout        | L    | 6.60     | Trout     |  |  |  |

## (SL) ST. LOUIS

| BATTERS      |      | BATTERS |    |     |     |           |
|--------------|------|---------|----|-----|-----|-----------|
| PLAYER ABBR. | HAND | AVG     | HR | SPD | POS | FULL NAME |
| Thompson     | L    | 290     | 4  | 13  | O   | Thompson  |
| Guerrero     | R    | 311     | 17 | 4   | I   | Guerrero  |
| Pendleton    | S    | 264     | 13 | 8   | I   | Pendleton |
| Branansky    | R    | 239     | 20 | 6   | O   | Branansky |
| Oqueudo      | S    | 291     | 1  | 6   | I   | Oqueudo   |
| Smith        | S    | 273     | 2  | 13  | I   | Smith     |
| Pena         | R    | 259     | 4  | 6   | C   | Pena      |
| Coleman      | S    | 254     | 2  | 19  | O   | Coleman   |
| Walling      | L    | 304     | 1  | 4   | O   | Walling   |
| Jones        | L    | 293     | 0  | 5   | I   | Jones     |
| Morris       | L    | 239     | 2  | 5   | O   | Morris    |
| McGee        | S    | 236     | 3  | 8   | O   | McGee     |
| Pagnozzi     | R    | 150     | 0  | 6   | C   | Pagnozzi  |
| Linderman    | R    | 111     | 0  | 6   | O   | Linderman |

| PITCHERS     |      | PITCHERS |             |  |  |  |
|--------------|------|----------|-------------|--|--|--|
| PLAYER ABBR. | HAND | ERA      | FULL NAME   |  |  |  |
| Magrane      | L    | 2.91     | Magrane     |  |  |  |
| DeLeon       | R    | 3.05     | DeLeon      |  |  |  |
| Terry        | R    | 3.57     | Terry       |  |  |  |
| Hill         | R    | 3.80     | Hill        |  |  |  |
| Dipino       | L    | 2.45     | Dipino      |  |  |  |
| Quisenberry  | RS   | 2.64     | Quisenberry |  |  |  |
| Dayley       | L    | 2.87     | Dayley      |  |  |  |
| Costello     | R    | 3.32     | Costello    |  |  |  |
| Carpenter    | R    | 3.18     | Carpenter   |  |  |  |
| Worrell      | R    | 2.96     | Worrell     |  |  |  |

# ★ OFFICIAL PLAYER ROSTERS

## (SF) SAN FRANCISCO

| BATTERS      |      | HR  | SPD | POS | FULL NAME |
|--------------|------|-----|-----|-----|-----------|
| PLAYER ABBR. | HAND | AVG |     |     |           |
| Butler       | L    | 283 | 4   | 14  | Butler    |
| Thompson     | R    | 241 | 13  | 9   | Thompson  |
| Clark        | L    | 333 | 23  | 8   | Clark     |
| Mitchell     | R    | 291 | 47  | 6   | Mitchell  |
| Williams     | R    | 202 | 18  | 5   | Williams  |
| Riles        | L    | 278 | 7   | 6   | Riles     |
| Kennedy      | L    | 239 | 5   | 5   | Kennedy   |
| Mildonado    | R    | 217 | 9   | 6   | Maldonado |
| Oberkfel     | L    | 269 | 2   | 5   | Oberkfell |
| Nixon        | R    | 265 | 1   | 9   | Nixon     |
| Litton       | R    | 252 | 4   | 6   | Litton    |
| Urbe         | S    | 221 | 1   | 7   | Urbe      |
| Minwaring    | R    | 210 | 0   | 6   | Manwaring |
| Sheridan     | L    | 205 | 3   | 7   | Sheridan  |

| PITCHERS     |      | ERA  | FULL NAME |
|--------------|------|------|-----------|
| PLAYER ABBR. | HAND |      |           |
| Reuschel     | R    | 2.94 | Reuschel  |
| Garnells     | R    | 2.28 | Garnells  |
| Robinson     | R    | 3.43 | Robinson  |
| Knepper      | R    | 5.13 | Knepper   |
| Lacoss       | R    | 3.17 | Lacoss    |
| Brantley     | R    | 4.07 | Brantley  |
| Hammaker     | L    | 3.76 | Hammaker  |
| Betrosian    | RS   | 2.87 | Betrosian |
| Dravecky     | L    | 3.46 | Dravecky  |
| Lefters      | LS   | 2.69 | Lefters   |

## (TO) TORONTO

| BATTERS      |      | HR  | SPD | POS | FULL NAME |
|--------------|------|-----|-----|-----|-----------|
| PLAYER ABBR. | HAND | AVG |     |     |           |
| Liriano      | S    | 263 | 5   | 10  | Liriano   |
| Gruber       | R    | 290 | 18  | 9   | Gruber    |
| Bell         | R    | 297 | 18  | 6   | Bell      |
| McGriff      | L    | 269 | 36  | 7   | McGriff   |
| Whitt        | L    | 262 | 11  | 6   | Whitt     |
| Felix        | S    | 258 | 9   | 11  | Felix     |
| Fernandez    | S    | 257 | 11  | 12  | Fernandez |
| Moseby       | L    | 221 | 11  | 12  | Moseby    |
| Wilson       | R    | 298 | 2   | 9   | Wilson    |
| Lee          | S    | 260 | 3   | 6   | Lee       |
| Borders      | R    | 257 | 3   | 5   | Borders   |
| Mulliniks    | L    | 238 | 3   | 5   | Mulliniks |
| Lawless      | R    | 229 | 0   | 10  | Lawless   |
| Brenly       | R    | 170 | 1   | 6   | Brenly    |

| PITCHERS     |      | ERA  | FULL NAME |
|--------------|------|------|-----------|
| PLAYER ABBR. | HAND |      |           |
| Shieb        | R    | 3.35 | Shieb     |
| Key          | L    | 3.88 | Key       |
| Cerutti      | L    | 3.07 | Cerutti   |
| Flanagan     | R    | 3.93 | Flanagan  |
| Henke        | L    | 1.92 | Henke     |
| Wells        | L    | 2.40 | Wells     |
| Wills        | R    | 3.66 | Wills     |
| Stotlmyre    | R    | 3.88 | Stotlmyre |
| Ward         | R    | 3.77 | Ward      |
| Castillo     | L    | 6.11 | Castillo  |

# ★ OFFICIAL PLAYER ROSTERS

## (TX) TEXAS

| BATTERS      |      | BATTERS |    |     |     |            |              |      |     |    |     |     |           |
|--------------|------|---------|----|-----|-----|------------|--------------|------|-----|----|-----|-----|-----------|
| PLAYER ABBR. | HAND | AVG     | HR | SPD | POS | FULL NAME  | PLAYER ABBR. | HAND | AVG | HR | SPD | POS | FULL NAME |
| Espy         | S    | 257     | 3  | 16  | 0   | Espy       | Smith        | S    | 273 | 2  | 13  | I   | Smith     |
| Franco       | R    | 316     | 13 | 12  | I   | Franco     | Gwynn        | L    | 336 | 4  | 16  | O   | Gwynn     |
| Baines       | L    | 309     | 16 | 4   | 0   | Baines     | Clark        | L    | 333 | 23 | 8   | I   | Clark     |
| Sierra       | S    | 306     | 29 | 8   | 0   | Sierra     | Mitchell     | R    | 291 | 47 | 6   | O   | Mitchell  |
| Incavigli    | R    | 236     | 21 | 7   | 0   | Incaviglia | E Davis      | R    | 281 | 34 | 12  | O   | E Davis   |
| Buechele     | R    | 235     | 16 | 5   | I   | Buechele   | Johnson      | S    | 287 | 36 | 5   | I   | Johnson   |
| Palmeiro     | L    | 275     | 8  | 6   | I   | Palmeiro   | Sundberg     | R    | 290 | 30 | 10  | I   | Sundberg  |
| Petralli     | L    | 304     | 4  | 5   | C   | Petralli   | Santiago     | R    | 236 | 16 | 9   | C   | Santiago  |
| Mannique     | L    | 275     | 4  | 6   | I   | Mannique   | Guerro       | R    | 311 | 17 | 4   | I   | Guerrero  |
| Leach        | R    | 272     | 1  | 6   | I   | Leach      | Bonilla      | S    | 281 | 24 | 8   | I   | Bonilla   |
| Kunkel       | R    | 270     | 8  | 6   | I   | Kunkel     | G Davis      | R    | 269 | 34 | 6   | I   | G Davis   |
| Stanley      | R    | 246     | 1  | 6   | O   | Stanley    | V Hayes      | L    | 259 | 26 | 13  | O   | V Hayes   |
| Sundberg     | R    | 197     | 2  | 6   | O   | Sundberg   | Pena         | R    | 259 | 4  | 6   | C   | Pena      |
| Kreuter      | S    | 152     | 5  | 6   | C   | Kreuter    | Dawson       | R    | 252 | 21 | 7   | O   | Dawson    |

| PITCHERS     |      | PITCHERS |           |              |      |      |           |  |
|--------------|------|----------|-----------|--------------|------|------|-----------|--|
| PLAYER ABBR. | HAND | ERA      | FULL NAME | PLAYER ABBR. | HAND | ERA  | FULL NAME |  |
| Ryan         | R    | 3.20     | Ryan      | Smoltz       | R    | 2.94 | Smoltz    |  |
| Brown        | R    | 3.35     | Brown     | Sutcliffe    | R    | 3.66 | Sutcliffe |  |
| Witt         | R    | 5.14     | Witt      | Reuschel     | R    | 2.94 | Reuschel  |  |
| Jeffcoat     | R    | 3.58     | Jeffcoat  | Hershiser    | R    | 2.31 | Hershiser |  |
| Hough        | R    | 4.35     | Hough     | Williams     | L    | 2.76 | Williams  |  |
| Russell      | R    | 1.98     | Russell   | Franco       | L    | 3.12 | Franco    |  |
| Guante       | R    | 3.91     | Guante    | Howell       | R    | 1.58 | Howell    |  |
| Rogers       | R    | 2.93     | Rogers    | Lanardum     | R    | 1.67 | Lanardum  |  |
| Hall         | L    | 3.70     | Hall      | M Davis      | L    | 1.85 | M Davis   |  |
| Mielke       | R    | 3.26     | Mielke    | Burke        | R    | 2.55 | Burke     |  |

## (NA) NATIONAL ALL STARS

| BATTERS      |      | BATTERS |    |     |     |           |              |      |     |    |     |     |           |
|--------------|------|---------|----|-----|-----|-----------|--------------|------|-----|----|-----|-----|-----------|
| PLAYER ABBR. | HAND | AVG     | HR | SPD | POS | FULL NAME | PLAYER ABBR. | HAND | AVG | HR | SPD | POS | FULL NAME |
| Smith        | S    | 273     | 2  | 13  | I   | Smith     | Smith        | S    | 273 | 2  | 13  | I   | Smith     |
| Gwynn        | L    | 336     | 4  | 16  | O   | Gwynn     | Gwynn        | L    | 336 | 4  | 16  | O   | Gwynn     |
| Clark        | L    | 333     | 23 | 8   | I   | Clark     | Clark        | L    | 333 | 23 | 8   | I   | Clark     |
| Mitchell     | R    | 291     | 47 | 6   | O   | Mitchell  | Mitchell     | R    | 291 | 47 | 6   | O   | Mitchell  |
| E Davis      | R    | 281     | 34 | 12  | O   | E Davis   | E Davis      | R    | 281 | 34 | 12  | O   | E Davis   |
| Johnson      | S    | 287     | 36 | 5   | I   | Johnson   | Johnson      | S    | 287 | 36 | 5   | I   | Johnson   |
| Sundberg     | R    | 290     | 30 | 10  | I   | Sundberg  | Sundberg     | R    | 290 | 30 | 10  | I   | Sundberg  |
| Santiago     | R    | 236     | 16 | 9   | C   | Santiago  | Santiago     | R    | 236 | 16 | 9   | C   | Santiago  |
| Guerro       | R    | 311     | 17 | 4   | I   | Guerro    | Guerro       | R    | 311 | 17 | 4   | I   | Guerrero  |
| Bonilla      | S    | 281     | 24 | 8   | I   | Bonilla   | Bonilla      | S    | 281 | 24 | 8   | I   | Bonilla   |
| G Davis      | R    | 269     | 34 | 6   | I   | G Davis   | G Davis      | R    | 269 | 34 | 6   | I   | G Davis   |
| V Hayes      | L    | 259     | 26 | 13  | O   | V Hayes   | V Hayes      | L    | 259 | 26 | 13  | O   | V Hayes   |
| Pena         | R    | 259     | 4  | 6   | C   | Pena      | Pena         | R    | 259 | 4  | 6   | C   | Pena      |
| Dawson       | R    | 252     | 21 | 7   | O   | Dawson    | Dawson       | R    | 252 | 21 | 7   | O   | Dawson    |

| PITCHERS     |      | PITCHERS |           |              |      |      |           |  |
|--------------|------|----------|-----------|--------------|------|------|-----------|--|
| PLAYER ABBR. | HAND | ERA      | FULL NAME | PLAYER ABBR. | HAND | ERA  | FULL NAME |  |
| Smoltz       | R    | 2.94     | Smoltz    | Smoltz       | R    | 2.94 | Smoltz    |  |
| Sutcliffe    | R    | 3.66     | Sutcliffe | Sutcliffe    | R    | 3.66 | Sutcliffe |  |
| Reuschel     | R    | 2.94     | Reuschel  | Reuschel     | R    | 2.94 | Reuschel  |  |
| Hershiser    | R    | 2.31     | Hershiser | Hershiser    | R    | 2.31 | Hershiser |  |
| Williams     | L    | 2.76     | Williams  | Williams     | L    | 2.76 | Williams  |  |
| Franco       | L    | 3.12     | Franco    | Franco       | L    | 3.12 | Franco    |  |
| Howell       | R    | 1.58     | Howell    | Howell       | R    | 1.58 | Howell    |  |
| Lanardum     | R    | 1.67     | Lanardum  | Lanardum     | R    | 1.67 | Lanardum  |  |
| M Davis      | L    | 1.85     | M Davis   | M Davis      | L    | 1.85 | M Davis   |  |
| Burke        | R    | 2.55     | Burke     | Burke        | R    | 2.55 | Burke     |  |

# ★ OFFICIAL PLAYER ROSTERS

## (AM) AMERICAN ALL STARS

| BATTERS      |           | HAND | AVG | HR | SPD | POS | FULL NAME |
|--------------|-----------|------|-----|----|-----|-----|-----------|
| PLAYER ABBR. | Jackson   | R    | 256 | 32 | 13  | 0   | Jackson   |
|              | Boggs     | R    | 330 | 3  | 6   | 1   | Boggs     |
|              | Puckett   | R    | 339 | 9  | 9   | 0   | Puckett   |
|              | Sierra    | S    | 306 | 29 | 8   | 0   | Sierra    |
|              | Franco    | R    | 316 | 13 | 12  | 1   | Franco    |
|              | C.Ripken  | R    | 257 | 21 | 5   | 1   | C.Ripken  |
|              | McGwire   | R    | 231 | 33 | 5   | 1   | McGwire   |
|              | Steinbach | R    | 273 | 7  | 4   | C   | Steinbach |
|              | Baines    | L    | 309 | 16 | 4   | 0   | Baines    |
|              | Sax       | R    | 315 | 5  | 16  | 1   | Sax       |
|              | Mattingly | L    | 303 | 23 | 6   | 1   | Mattingly |
|              | Tettleton | S    | 258 | 26 | 6   | C   | Tettleton |
|              | Leonard   | R    | 254 | 24 | 6   | 0   | Leonard   |
|              | Gaetti    | R    | 251 | 19 | 8   | 1   | Gaetti    |

### PITCHERS

| PLAYER ABBR. | HAND | ERA  | FULL NAME |
|--------------|------|------|-----------|
| Swindell     | L    | 3.37 | Swindell  |
| Ryan         | R    | 3.20 | Ryan      |
| Finley       | L    | 2.57 | Finley    |
| Gubicza      | R    | 3.04 | Gubicza   |
| Stewart      | R    | 3.32 | Stewart   |
| Moore        | R    | 2.61 | Moore     |
| Henneman     | R    | 3.70 | Henneman  |
| D.Jones      | R    | 2.34 | D.Jones   |
| Plesac       | L    | 2.35 | Plesac    |
| Russell      | R    | 1.98 | Russell   |

## (NY) NEW YORK (AMERICAN)

| BATTERS      |            | HAND | AVG | HR | SPD | POS | FULL NAME  |
|--------------|------------|------|-----|----|-----|-----|------------|
| PLAYER ABBR. | Sax        | R    | 315 | 5  | 16  | 1   | Sax        |
|              | Kelly      | R    | 302 | 9  | 14  | 0   | Kelly      |
|              | Barfield   | R    | 234 | 23 | 7   | 0   | Barfield   |
|              | Mattingly  | L    | 303 | 23 | 6   | 1   | Mattingly  |
|              | Polonia    | L    | 300 | 3  | 12  | 0   | Polonia    |
|              | Espinosa   | R    | 282 | 0  | 6   | 1   | Espinosa   |
|              | Hall       | R    | 260 | 17 | 4   | 0   | Hall       |
|              | Slaughter  | R    | 251 | 5  | 5   | C   | Slaughter  |
|              | Balboni    | R    | 237 | 17 | 5   | 1   | Balboni    |
|              | Velarde    | R    | 340 | 2  | 6   | 1   | Velarde    |
|              | Geren      | R    | 288 | 9  | 5   | C   | Geren      |
|              | Brookins   | R    | 226 | 4  | 6   | 1   | Brookins   |
|              | Pagliarulo | L    | 197 | 4  | 5   | 1   | Pagliarulo |
|              | Tollison   | R    | 164 | 1  | 7   | 0   | Tollison   |

### PITCHERS

| PLAYER ABBR. | HAND | ERA  | FULL NAME |
|--------------|------|------|-----------|
| Hawkins      | R    | 4.80 | Hawkins   |
| Cary         | R    | 3.26 | Cary      |
| Parker       | R    | 3.68 | Parker    |
| Lapoint      | L    | 5.62 | Lapoint   |
| Plunk        | R    | 3.28 | Plunk     |
| Guettman     | L    | 2.45 | Guettman  |
| Cadaret      | R    | 4.05 | Cadaret   |
| Ferrell      | R    | 4.01 | Ferrell   |
| McCullers    | R    | 4.57 | McCullers |
| Righetti     | L    | 3.00 | Righetti  |



## ★ I FATTI DEL BASEBALL:

Il Baseball si svolge su un campo composto di due parti - il **Campo Interno/Infield** (il **Diamante**) e quello **Esterno/Outfield**. Assomiglia un po' al gioco della lizza, ma non è proprio così! I lanciatori qui possono tirare la palla a velocità anche di 100 miglia all'ora!, anche se nel corso di più di 162 partite a stagione hanno bisogno di frequenti soste e rotazioni nella posizione di inizio.

Gran parte dell'azione si svolge nel diamante interno. Le basi collocate in vari punti del diamante distano 90 piedi tra di loro e sono dette **Casa Base, Prima, Seconda e Terza**. Quando sei alla battuta, il tuo obiettivo è quello di passare ognuna delle basi fino a che non arrivi a quella di casa - E va bene, assomiglia un po' alla lizza! Se hai tempo disponibile, puoi completare il circuito in una sola volta, conseguendo il punteggio di un giro (Run), sebbene di solito si avanzi solo di una o due basi alla volta. La battuta migliore è quella che manda la palla dritta fuori del perimetro e in mezzo al pubblico - cioè fare un **Home Run (Giro Completo)**, dove ogni base carica (che ha un giocatore) va automaticamente alla casa base, per cui se la prima e la terza sono cariche e il battitore azzecca un home run, tutti vanno alla **Casa Base/Home** totalizzando 3 giri! (cioè il primo, il terzo e ovviamente il battitore). Una palla viene detta **Foul (Fallo)** quando viene colpita da dietro le linee di fallo che vanno dalla casa base, passando per la terza, fino al perimetro e dalla casa base, passando per la prima, fino al perimetro.

Tutto questo presuppone che tu riesca a colpire la palla, il che naturalmente è piuttosto difficile - almeno all'inizio. E allora che succede in questi casi? Beh, se la manchi e la palla ha superato il 'piatto', allora viene detto **Strike!** Confuso? - lo sarai senz'altro.

## ★ SCENARI DI BASEBALL:

Adesso facciamo un giro tra una serie di campi per vedere se riusciamo a chiarire le cose:

1. Il **Pitcher/Lanciatore** (il tizio che tira la palla) avanza verso il **Mound** o Pedana (un rialzo di terra al centro del diamante), si carica, volteggia e la palla schizza via a 90 miglia all'ora verso il Batter/Battitore, situato ad appena 20 yarde di distanza, diretta alla **Zona di Strike** (immagina un riquadro sul piatto, che inizia all'altezza delle ginocchia del battitore e finisce all'altezza del petto), il battitore fa per colpire e manca - è uno strike!

2. Il lanciatore si prepara di nuovo, lancia, ma adesso è un tantino troppo sicuro, dopo aver fatto uno strike, per cui la palla manca la zona di strike e il battitore non si muove (se si fosse mosso e avesse mancato la palla, sarebbe stato ugualmente uno strike), l'arbitro agita le mani - ed è una **Ball/Palla!**

3. Il lanciatore adesso è proprio arrabbiato e lascia partire una palla davvero veloce, dritta verso il piatto, il battitore si muove, impatta e la palla vola sul campo, supera l'arresto corto e si ferma sul perimetro oltre il giocatore piazzato (fielder) sulla **Sinistra del Campo (Left Field)**. Il battitore lascia cadere la mazza e corre all'impazzata verso la prima base. Riesce ad arrivarci con una scivolata appena prima che il **Primo Uomo Base (First Baseman)** acchiappi la palla - **Salvo (Safe)!**

4. Il lanciatore vede un segnale dal proprio **Ricevitore** e tira una **Palla ad Effetto (Curveball)**. Il battitore si muove e impatta, ma la palla si innalza in aria - una **Palla Volante (Fly Ball)**. La palla viene presa al centro del campo - il battitore è fuori ma il giocatore della prima base ha già iniziato la corsa verso la seconda base. Adesso questo deve fare una **Tag Base** (cioè cambiare e correre verso la base da cui è venuto) prima di poter proseguire il giro. Infatti si gira, corre e ce la fa!

5. Il terzo battitore si posiziona, il lanciatore si prepara, si raccoglie, ma proprio adesso il giocatore sulla seconda base è uscito dal bordo e ha cominciato la corsa. La palla va larga, il battitore la lascia andare e prima che il ricevitore possa prenderla, il cursore fa la terza base - questo è uno **Steal! (Rubata!)**

Quindi, ci sono tre modi in cui la squadra in campo può eliminare un battitore o un cursore:

(i) Facendo mancare la palla al battitore con tre strike (il ricevitore deve però prendere queste palle).

(ii) Prendendo la palla colpita dal battitore prima che rimbalzi.

(iii) Con un campista che tocca un cursore con la palla prima che questo arrivi ad una base.

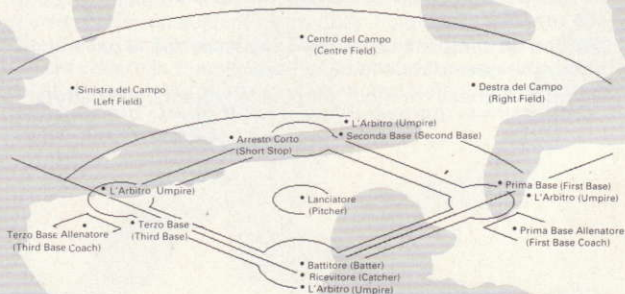
Ognuno di questi tre modi, elimina la squadra alla battuta.



## ★ ALCUNI FATTI ECCEZIONAI:

- Il lancio più veloce mai effettuato, è stato quello di Nolan Ryan nel 1974 - ben 108 miglia orarie!
- Più di 100000 palle vengono impiegate da entrambe le leghe maggiori nel corso di un campionato, al costo di \$3 dollari l'una.
- La prima squadra di baseball professionista è stata quella dei Cincinnati Red Socks nel 1938!
- Ronald Reagan è stato annunciatore di baseball in Chicago prima della Seconda Guerra Mondiale!
- Il numero record di home run in una stagione è detenuto da Babe Ruth con il punteggio di 60 nel 1927.
- Il baseball *forse* si basa sulla lizza!

## ★ CAMPO DA BASEBALL



## ★ INTRODUZIONE

**RBI Baseball** simula il baseball vero. Molte delle regole e delle strategie delle partite vere vengono applicate qui - Devi lanciare, colpire, correre e fare sostituzioni oculate, se vuoi avere successo.

Ogni giocatore ha i suoi punti di forza e le sue debolezze basati sulle statistiche dal vero. Per i battitori, le statistiche includono la sua posizione, l'abilità di battuta, la potenza, la velocità di corsa e la resistenza. Tutti i giocatori di **RBI** sono stati creati con le statistiche del 1989 dei professionisti reali - Un giocatore che ha rubato un sacco di basi e che ha realizzato un'alta media di battute nella vita reale, nel gioco è dotato di alta rapidità. Ugualmente, un giocatore con parecchi home run nella realtà, sarà dotato di un buon grado di potenza nel gioco. Con la pratica, imparerai a gestire al meglio le tue squadre e giocatori preferiti.

Nota: A causa della velocità di esecuzione degli elaboratori a 8 bit, è stata utilizzata una simulazione semplificata delle statistiche reali.

## ★ COME INIZIARE A GIOCARE

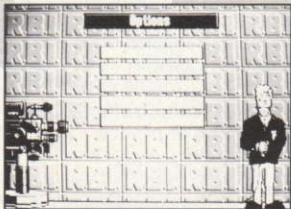
Premi il **BOTTONI #1**:

1P: Giochi contro il computer.

2P: Gioco di competizione.

Guarda: Computer contro Computer  
(Modalità Dimostrazione).

Opzioni: Per selezionare le opzioni.



## Selezione della Squadra:

Muovi il cursore per selezionare la squadra sulla conferenza prescelta. Quando giochi col computer, questo seleziona automaticamente la sua squadra.



## Selezione Lanciatore Iniziale:

Puoi utilizzare fino a 5 lanciatori per partita - 1 iniziatore e 4 di ricambio, oppure 2 iniziatori: Sposta il cursore sul giocatore che vuoi togliere da questo schieramento. Il suo nome apparirà in alto sullo schermo, sotto la parola 'Replace' (Sostituisci). Adesso porta il cursore sul giocatore che vuoi inserire dalla panchina. Il suo nome apparirà sulla destra di quello che va a sostituire. Premi il BOTTONE #1 per sostituire e il BOTTONE #2 per non sostituire.

## Selezione Schieramento di Inizio:

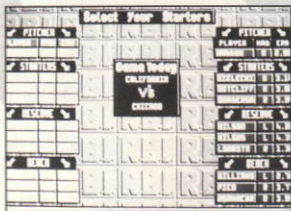
Muovi il cursore con il Joystick/Tastiera.

Premi il BOTTONE #1 per cambiare giocatori.

Premi BOTTONE #2 per accettare lo schieramento corrente.

## OPZIONI DI TIME OUT (SOSPENSIONE)

Muovi il cursore mediante il Joystick/Tastiera.

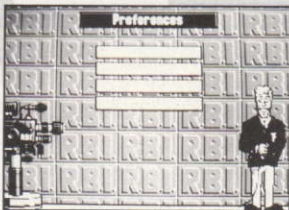


**Instant Replay (Ripetizione Istantanea):** Vedi la ripetizione istantanea dell'ultima giocata. Alcune giocate non possono essere riviste con la ripetizione istantanea.

**Play Ball (Gioca la Palla):** Premi il BOTTONE #1 per tornare a giocare.

**Substitutions (Sostituzioni):** Cambia Battitore/Cursore di Base o Lanciatore.

**Scoreboard (Tabellone):** Premi BOTTONE #1 per vedere il punteggio sul tabellone.



## CONTROLLI D'ATTACCO

### Alla Battuta:

Muovi la posizione del battitore sulla pedana di battuta mediante il Joystick/Tastiera.



**Bottone #1:** Il battitore muove la mazza. Per una mazzata completa, premi e tieni schiacciato. Per vibrare il colpo, premi e rilascia rapidamente.

## **Corsa alla Base:**

Usa il Joystick/Tastiera:

**Su:** Il Corsore avanza da/ritorna alla seconda base.

**Giù:** Il Corsore avanza sulla casa base.

**Sinistra:** Il Corsore avanza da/ritorna alla terza base.

**Destra:** Il Corsore ritorna alla prima base.

**Bottone #1:** Usando il Joystick/Tastiera, seleziona il cursore di base e premi il Bottone #1 per far avanzare il cursore alla base seguente. Quando il cursore si trova a metà strada, lo puoi far tornare indietro selezionando la base da cui è partito mediante il Joystick/Tastiera e premendo il Bottone #1.

**Nota:** I cursori di base cominciano a correre appena la palla viene colpita. Quando c'è una palla volante, sta al giocatore far tornare indietro tutti i cursori per evitare un doppio o triplo gioco (cioè, quando due o tre componenti della squadra in battuta sono impiegati contemporaneamente). Dopo aver effettuato il ritorno, puoi avanzare alla base seguente.

# CONTROLLI DI DIFESA

## Lancio:

Usa il Joystick/Tastiera:

Su: Palla lenta. Giù: Palla veloce.

Sinistra: Effetto a Sinistra. Destra: Effetto a Destra.

Nessuna Direzione: Velocità di lancio normale.

Nota: Il lanciatore può muoversi da un lato all'altro della pedana prima di tirare.

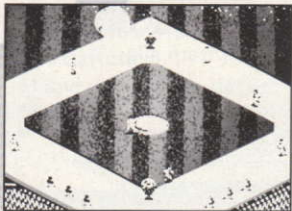
**Bottone #1:** Tira la palla

Premi e tieni schiacciato il Bottone #1, poi mediante il Joystick/Tastiera, premi Su, Giù, Sinistra o Destra per selezionare il tipo di lancio. Rilascia il Bottone #1 per tirare.

**Bottone #2:** Elimina un cursore di base.

Usa questo per prendere un cursore che tenta di scattare dalla base. Puoi scegliere la base su cui far lanciare mediante il Joystick/Tastiera e premendo il Bottone #2.

## Campisti:



Usa il Joystick/Tastiera:

Su: Muove il campista in su/Seleziona la seconda base.

Giù: Muove il campista in giù/Seleziona la casa base.

Sinistra: Muove il campista a sinistra/Seleziona la terza base.

Destra: Muove il campista a destra/Seleziona la prima base.

Dopo che la palla è stata colpita, puoi correre, tuffarti e saltare per la palla. Premi il Bottone #1 quando la palla ti arriva vicino e farai un salto o un tuffo, a seconda che la palla sia in aria o a terra. Premi sinistra o destra per controllare la direzione del tuffo.

Bottone #1: Premi il bottone per lanciare la palla. Questa viene tirata alla base che hai selezionato con il Joystick/Tastiera. Se nessuna base è stata selezionata, la palla viene tirata al lanciatore sulla pedana.

## **Errori:**

Ogni tanto un campista fa una presa difettosa a 'sbalzelli' o un tiro scadente. Quando un campista ha lasciato la sua posizione, evita di tirare la palla su una base.

## **MODALITA' DIMOSTRAZIONE**

In modalità dimostrazione il computer gioca da solo, il che può essere utile per imparare delle tecniche, ecc.

## **PARTITE DI SERIE**

In modalità di gioco a due, esegui una serie di sette partite. In modalità di gioco da solo, puoi eseguire una serie di sette partite scegliendo una squadra dalla Lega Nazionale e una dalla Lega Americana, oppure puoi giocare con tutte le squadre della lega scegliendone due dalla stessa lega.



## ★ **SUGGERIMENTI E CONSIGLI:**

### **Lanci:**

Ricorda che i lanciatori iniziali hanno più resistenza di quelli di riserva. Stai sempre attento all'abilità del tuo lanciatore perché si stanca. Tieni d'occhio le miglia per ora (MPH) e quanto puoi far muovere lateralmente il lanciatore. La palla veloce e la palla pesante consumano più resistenza dei lanci normali. Quando lanci al computer, specialmente quando c'è un battitore potente, cerca di non tirare a metà del piatto. L'utilizzo della palla pesante quando hai conseguito già due strike sul battitore, è spesso una buona tattica.

### **Campisti:**

Devi muovere i tuoi campisti appena la palla viene colpita. Familiarizzati con i punti di partenza di tutti i tuoi campisti, in modo da reagire rapidamente invece di aspettare per vedere tutti i campisti. Quando la palla viene colpita alta (un 'pop fly'), occorre prevedere dove andrà a cadere e spostare il giocatore più vicino su quel punto. Dovrai regolarti sulla base dell'ombra proiettata dalla palla e dal tono che ne indica l'altezza.

Quando rilanci alle basi, in genere è bene cercare di eliminare il cursore più prossimo alla casa base e non il battitore che corre verso la prima, a meno che non hai già due campisti fuori - nel qual caso elimina chiunque sia più distante da una base, dato che qualunque home run eseguito in quel gioco non consegue punti se butti fuori il terzo e finisci l'inning.

### **Battute:**

Non rimanere fermo sulla pedana di battuta. Inganna il lanciatore sulla tua posizione reale al momento del lancio.

Impara a 'rubare' le basi - fai scattare i tuoi cursori appena la palla viene lanciata. Stai attento però a non farti eliminare scattando troppo presto.

Ricorda che una palla presa significa che ogni cursore deve rientrare alla sua base prima di continuare a correre.

Una tattica spesso usata è quella della 'smorzata' (bunt), cioè quando il battitore lascia che la palla impatti soltanto con la mazza, senza colpirla con violenza mandandola più lontano possibile.

### **In Genere:**

Se sostituisci un campista con un giocatore che non è della stessa posizione, ci saranno più possibilità di errore.

Nella modalità di gioco a due, non parlare mai col tuo avversario dell'ultimo lancio. Se lui viene a sapere come la pensi, potrebbe avvantaggiarsene al prossimo lancio.

Quando tiri la palla, scegli la direzione voluta con il Joystick/Tastiera, poi premi il BOTTONE #1. Non selezionare una direzione, lascia andare e poi premi il BOTTONE #1. Devi mantenere il Joystick/Tastiera in quella direzione fino a dopo aver premuto il bottone.

# ★ CONTROLLI

## Controlli Predefiniti IBM:

Giocatore #1

F1 = Time Out

F3 = Vai alle Opzioni

Sinistra = Freccia Sinistra

Destra = Freccia Destra

Su = Freccia Su

Giù = Freccia Giù

Bottone #1 = Invio

Button #2 = <- Indietro

### C64:

Giocatore #1

Run/Stop = Time Out

Tasto C=/ Smorzata

Joystick in Porta #2

Bottone #1 =

Bottone di Fuoco

Button #2 = Maiusc.sinistra

### ST/Amiga

Giocatore #1

F1 = Time Out

F3 = Vai alle Opzioni

Joystick in Porta #2

Bottone #1 =

Bottone di Fuoco

Button #2 = Maiusc.sinsitra

Giocatore #2

F2 = Time Out

F4 = Vai alle Opzioni

Sinistra = A

Destra = D

Su = W

Giù = X

Bottone #1 = S

Bottone #2 = BARRA

Giocatore #2

Run/Stop = Time Out

Tasto C=/Smorzata

Joystick in Porta #1

Button #1 = Bott di Fuoco

Button #2 = Maiusc.Destra

Giocatore #2

F2 = Time Out

F4 = Vai alle Opzioni

Joystick in Porta #1

Bottone #1 = Bott di Fuoco

Bottone #2 = Maiusc.Destra

# ★ **RBI VERSIONE SPECTRUM/AMSTRAD**

## **CARICAMENTO:**

### **Spectrum**

Disco : Inserisci il dischetto, premi INVIO al menu di avvio.

Cassetta : Batti LOAD"" e premi INVIO.

### **Amstrad**

Disco :Inserisci il dischetto, batti RUN"DISC" e premi INVIO.

Cassetta :Tieni schiacciato il tasto CONTR e premi INVIO.  
(Se hai un'unità disco allacciata, batti ITAPE prima).

## **CONTROLLI:**

Segui le istruzioni sullo schermo per la tastiera, oppure usa il joystick.

## **SELEZIONE SQUADRA:**

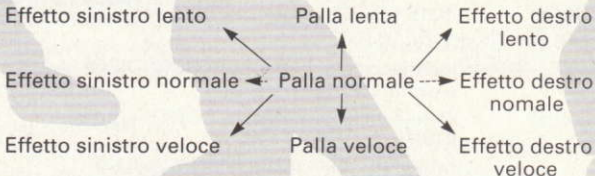
Seleziona la versione a UNO o DUE giocatori, poi seleziona le squadre dalla Lega Americana o Nazionale. I giocatori devono poi scegliere i lanciatori iniziali e l'ordine di battuta.

# VIDEATA BATTITORI:

## Lanci:

Premi FUOCO per lanciare, SINISTRA e DESTRA per far muovere il lanciatore a sinistra e a destra.

Dopo aver premuto FUOCO, il lanciatore impiega alcuni istanti per "caricarsi" prima di tirare. Durante la carica, muovi il joystick/Tastiera per selezionare il tipo di lancio desiderato.



Se vuoi sostituire un lanciatore, premi "CAPS SHIFT C" e segui le indicazioni (F0 sull'Amstrad).

Se vuoi fare la pausa, premi "CAPS SHIFT P" e un tasto qualunque per riprendere (F1 sull'Amstrad).

Se vuoi uscire dal gioco, premi "CAPS SHIFT Q" (F2 sull'Amstrad).

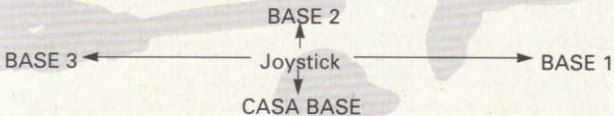
## Battuta:

SINISTRA, DESTRA SU e GIU' muovono il battitore. Più stai basso quando colpisci la palla, maggiore è la sventagliata, ma anche la possibilità di lisciare è maggiore.

## VIDEATA DI LANCIO

Se stai disponendo i campisti, osserva l'analizzatore di campisti (a sinistra in basso sullo schermo) per vedere il campista più vicino alla palla. SINISTRA, DESTRA, SU e GIU' muovono tutti i campisti fino a che non prendi o raccogli la palla.

Premi FUOCO per tirarla, seguito rapidamente da una direzione Joystick/Tastiera per indicare la base su cui vuoi tirarla.



### Cursori

Se hai appena battuto, ogni cursore che hai comincia a correre automaticamente verso la prossima base. Tuttavia, se la palla è troppo vicina a loro per correre con sicurezza, si fermano.

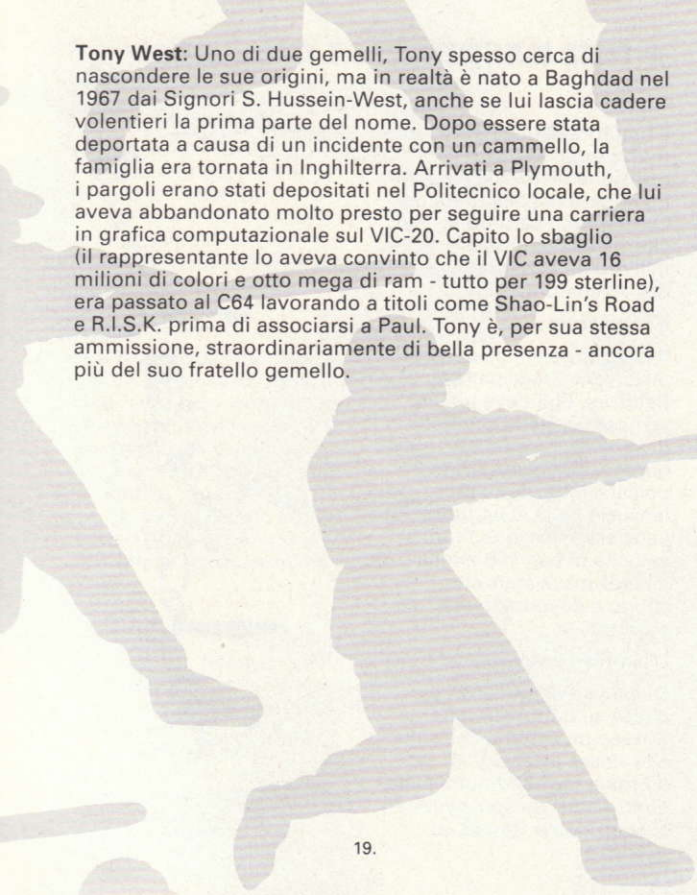
Se vuoi che corrano in ogni modo, premi FUOCO e poi SINISTRA, DESTRA o SU per qualunque base da cui li vuoi far correre.

## ★ LA SQUADRA:

RBI è stato scritto in origine da Tengen sul PC e sul C64 e poi convertito per lo Spectrum, l'Amstrad, ST e Amiga dai Kremlin.

**Andy Taylor:** Nato il 23 febbraio 1968 da genitori stupefatti in Preston nel Lancashire. I suoi avevano quindi traslocato a Evesham, dove Andy li aveva riacchiappati e vi si era stabilito per completare i suoi studi. Durante questo periodo difficile (per i genitori), Andy scrisse diversi giochi sullo ZX81 (per punizione) e con sorpresa di tutti li aveva anche pubblicati. Da allora non si era più voltato indietro (collare di gesso), passando a programmare sullo Spectrum e più tardi sull'Amstrad CPC. Tra i colpi riusciti di Andy ci sono, quello a suo fratello, Judge Dredd, Technocano e St Dragon. Attualmente, sta lavorando a Super Space Invaders per il Sega Master System, che però trova piuttosto difficile dato che il Sega non ha la tastiera!

**Paul Margrave:** E' nato a Nottingham nel 1965 ma non in una miniera di carbone, un fatto questo di adesso si pente veramente. In origine, avrebbe voluto studiare la piegatura delle coppole, ma venne convinto a studiare qualcosa dal nome lungo - un Diploma di Perito Elettrotecnico al Politecnico di Trent era proprio la cosa che ci voleva. Dopo il diploma, Paul aveva intuito l'enorme potenziale dei giochi per computer quando C&VG aveva pubblicato una sua creazione per l'Atari pagando pure 10 sterline intere. Con questo, era saltato sulla C5 turbo personalizzata e si era precipitato a Londra a lavorare a titoli come Bobsleigh (C64), F16 Combat Pilot (ST e PC), Licence to Kill, Cyberball e The Spy Who Loved Me. Tra le sue manie, ci sono la Guinness e le donne con biancheria di pelle.

The background of the page features several dark grey silhouettes of people in various running or athletic poses, scattered across the white space. The silhouettes are of varying sizes and orientations, creating a sense of movement and energy.

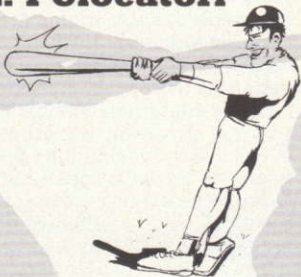
**Tony West:** Uno di due gemelli, Tony spesso cerca di nascondere le sue origini, ma in realtà è nato a Baghdad nel 1967 dai Signori S. Hussein-West, anche se lui lascia cadere volentieri la prima parte del nome. Dopo essere stata deportata a causa di un incidente con un cammello, la famiglia era tornata in Inghilterra. Arrivati a Plymouth, i pargoli erano stati depositati nel Politecnico locale, che lui aveva abbandonato molto presto per seguire una carriera in grafica computazionale sul VIC-20. Capito lo sbaglio (il rappresentante lo aveva convinto che il VIC aveva 16 milioni di colori e otto mega di ram - tutto per 199 sterline), era passato al C64 lavorando a titoli come Shao-Lin's Road e R.I.S.K. prima di associarsi a Paul. Tony è, per sua stessa ammissione, straordinariamente di bella presenza - ancora più del suo fratello gemello.



# ★ RBI BASEBALL: I Giocatori

## Il Battente

Il battitore fa il suo turno alla mazza quando va in posizione dietro al piatto. Egli riceve la palla tirata dal Lanciatore. I battitori si alternano alla mazza nell'ordine assegnato dall'Allenatore.



## Il Lanciatore

Il Lanciatore è il giocatore di difesa che tira la palla al Battitore. Egli deve tenere sempre un piede sul Piatto di Lancio, che è un pezzo di gomma sbiancata lungo 24 pollici e largo 6, quando lancia la palla al battitore. I Lanciatori possono tirare a velocità di ben 100 miglia all'ora! ma si stancano subito e devono essere sostituiti.



## I Campisti Esterni

Questa è l'ultima linea di difesa su battute lunghe. Spesso un esterno che salta alto riesce a salvare la giornata fermando una palla diretta fuori campo, evitando così un Home Run.



## L'Acchiappatore

Questo tipo fa un po' di più che acchiappare le palle che superano il battitore. Egli conduce la squadra di campisti e consiglia dalla sua posizione alle spalle il lanciatore su dove tirare. Su di loro si conta per via della conoscenza enciclopedica dei trascorsi di forma degli avversari.



## Il Basista

Molta dell'eccitazione del baseball risiede nelle basi quando il basista tenta di acchiappare la palla, di solito proprio quando il cursore arriva in scivolata, o saltando o tuffandosi. In più, il basista deve essere un ottimo tattico, spesso tirando la palla sulla base dove si sta dirigendo un basista.



## L'Arbitro

Nel baseball ci sono di solito quattro arbitri, uno per ogni base. Alle volte ne vengono aggiunti altri due a guardia delle linee di fallo. Gli arbitri permettono alle volte qualche protesta, ma la via più breve per gli spogliatoi è quella di recriminare eccessivamente.



# ★ STATISTICHE GIOCATORI

## (BA) BALTIMORE

| BATTERS |  | PLAYER ABBR. | HAND | AVG | HR | SPD | POS | FULL NAME   |
|---------|--|--------------|------|-----|----|-----|-----|-------------|
|         |  | Bradley      | R    | 277 | 11 | 13  | O   | Bradley     |
|         |  | Moreland     | R    | 278 | 6  | 6   | I   | Moreland    |
|         |  | C. Ripken    | R    | 257 | 21 | 5   | I   | C. Ripken   |
|         |  | Tettleton    | S    | 258 | 26 | 6   | C   | Tettleton   |
|         |  | Orsulak      | L    | 265 | 7  | 7   | O   | Orsulak     |
|         |  | Milligan     | R    | 268 | 12 | 8   | I   | Milligan    |
|         |  | Devereaux    | R    | 266 | 8  | 12  | O   | Devereaux   |
|         |  | Worthington  | R    | 247 | 15 | 5   | I   | Worthington |
|         |  | Sheets       | L    | 243 | 7  | 5   | O   | Sheets      |
|         |  | Finley       | R    | 249 | 2  | 13  | C   | Finley      |
|         |  | Melvin       | R    | 241 | 1  | 6   | O   | Melvin      |
|         |  | B. Ripken    | R    | 239 | 2  | 5   | I   | B. Ripken   |
|         |  | Traber       | L    | 209 | 4  | 6   | I   | Traber      |
|         |  | Anderson     | L    | 207 | 4  | 11  | O   | Anderson    |

| PITCHERS |  | PLAYER ABBR. | HAND | ERA  | FULL NAME  |
|----------|--|--------------|------|------|------------|
|          |  | Ballard      | L    | 3.43 | Ballard    |
|          |  | Milacki      | R    | 3.74 | Milacki    |
|          |  | Schmidt      | R    | 5.69 | Schmidt    |
|          |  | Harnisch     | R    | 4.62 | Harnisch   |
|          |  | Olson        | R    | 1.69 | Olson      |
|          |  | Williamson   | R    | 2.93 | Williamson |
|          |  | Holton       | R    | 4.02 | Holton     |
|          |  | Bautista     | R    | 5.31 | Bautista   |
|          |  | Hickey       | R    | 2.92 | Hickey     |
|          |  | Thurmond     | L    | 3.90 | Thurmond   |

## (CA) CALIFORNIA

| BATTERS |  | PLAYER ABBR. | HAND | AVG | HR | SPD | POS | FULL NAME  |
|---------|--|--------------|------|-----|----|-----|-----|------------|
|         |  | Washinth     | L    | 273 | 13 | 9   | O   | Washington |
|         |  | White        | S    | 245 | 12 | 17  | O   | White      |
|         |  | Joyner       | L    | 282 | 16 | 6   | I   | Joyner     |
|         |  | Davis        | S    | 271 | 22 | 6   | O   | Davis      |
|         |  | Ray          | S    | 289 | 5  | 7   | I   | Ray        |
|         |  | Parrish      | R    | 238 | 17 | 5   | C   | Parrish    |
|         |  | Schrold      | R    | 228 | 4  | 8   | I   | Schofield  |
|         |  | Howell       | L    | 228 | 20 | 6   | I   | Howell     |
|         |  | Downing      | R    | 283 | 14 | 5   | O   | Downing    |
|         |  | Armas        | R    | 257 | 11 | 5   | O   | Armas      |
|         |  | Anderson     | R    | 229 | 0  | 6   | I   | Anderson   |
|         |  | Hoffman      | R    | 212 | 1  | 6   | I   | Hoffman    |
|         |  | Bichette     | R    | 210 | 3  | 6   | O   | Bichette   |
|         |  | Schroder     | R    | 203 | 6  | 5   | C   | Schroeder  |

| PITCHERS |  | PLAYER ABBR. | HAND | ERA  | FULL NAME |
|----------|--|--------------|------|------|-----------|
|          |  | Blyleven     | R    | 2.73 | Blyleven  |
|          |  | Finley       | L    | 2.57 | Finley    |
|          |  | McCaskill    | R    | 2.93 | McCaskill |
|          |  | Witt         | R    | 4.54 | Witt      |
|          |  | Abbott       | R    | 3.92 | Abbott    |
|          |  | McClure      | L    | 1.55 | McClure   |
|          |  | Minton       | RS   | 2.20 | Minton    |
|          |  | Fraser       | R    | 3.24 | Fraser    |
|          |  | Harvey       | R    | 3.44 | Harvey    |
|          |  | Petry        | R    | 5.47 | Petry     |

# ★ STATISTICHE GIOCATORI

## (CH) CHICAGO (NATIONAL)

| BATTERS   |   | AVG | HR | SPD | POS | FULL NAME |
|-----------|---|-----|----|-----|-----|-----------|
| Walton    | R | 293 | 5  | 12  | 0   | Walton    |
| Grace     | L | 314 | 13 | 9   | 1   | Grace     |
| Dawson    | R | 252 | 21 | 7   | 0   | Dawson    |
| Sundberg  | R | 290 | 30 | 10  | 1   | Sundberg  |
| D Smith   | L | 324 | 9  | 8   | 0   | D Smith   |
| Dunston   | R | 278 | 9  | 11  | 1   | Dunston   |
| Salazar   | R | 282 | 9  | 5   | 1   | Salazar   |
| Berryhill | S | 257 | 5  | 4   | C   | Berryhill |
| Ramos     | R | 263 | 1  | 6   | 0   | Ramos     |
| McClendon | R | 286 | 12 | 8   | C   | McClendon |
| Webster   | S | 257 | 3  | 10  | 1   | Webster   |
| Wilkinson | S | 244 | 1  | 7   | 1   | Wilkinson |
| Wynne     | L | 243 | 7  | 7   | 0   | Wynne     |
| Law       | R | 235 | 7  | 6   | 1   | Law       |

| PITCHERS    |   | ERA  | FULL NAME   |
|-------------|---|------|-------------|
| Maddux      | R | 2.95 | Maddux      |
| Bielecki    | R | 3.14 | Bielecki    |
| Sutcliffe   | R | 3.66 | Sutcliffe   |
| Sandersn    | R | 3.94 | Sandersn    |
| Wilson      | L | 4.20 | Wilson      |
| Kilgus      | L | 4.39 | Kilgus      |
| Lancaster   | L | 1.36 | Lancaster   |
| Williams    | L | 2.76 | Williams    |
| Pico        | R | 3.77 | Pico        |
| Assenmacher | R | 3.99 | Assenmacher |

## (AT) ATLANTA

| BATTERS  |   | AVG | HR | SPD | POS | FULL NAME |
|----------|---|-----|----|-----|-----|-----------|
| McDowell | L | 304 | 7  | 10  | 0   | McDowell  |
| Treadway | R | 277 | 8  | 6   | 1   | Treadway  |
| Murphy   | R | 228 | 20 | 6   | 0   | Murphy    |
| L Smith  | R | 315 | 21 | 12  | 0   | L Smith   |
| Thomas   | R | 213 | 13 | 6   | 1   | Thomas    |
| Blauser  | R | 270 | 12 | 6   | 1   | Blauser   |
| Perry    | L | 252 | 4  | 9   | 1   | Perry     |
| Davis    | R | 169 | 4  | 4   | C   | Davis     |
| Berroa   | R | 265 | 2  | 6   | 0   | Berroa    |
| James    | L | 259 | 1  | 5   | 0   | James     |
| Gregg    | L | 243 | 6  | 6   | 0   | Gregg     |
| Evans    | R | 207 | 11 | 5   | 1   | Evans     |
| Russell  | R | 182 | 2  | 5   | C   | Russell   |
| Gant     | R | 177 | 9  | 8   | 1   | Gant      |

| PITCHERS  |   | ERA  | FULL NAME |
|-----------|---|------|-----------|
| Glavine   | L | 3.68 | Glavine   |
| Smoltz    | R | 2.94 | Smoltz    |
| Litlquist | R | 3.97 | Litlquist |
| P Smith   | R | 4.75 | P Smith   |
| Eichhorn  | R | 4.35 | Eichhorn  |
| Clary     | R | 3.15 | Clary     |
| Boever    | R | 3.94 | Boever    |
| Alvarez   | R | 2.86 | Alvarez   |
| Stanton   | R | 1.50 | Stanton   |
| Acker     | R | 2.67 | Acker     |

# ★ STATISTICHE GIOCATORI

## (BO) BOSTON

| BATTERS      |      | HR  | SPD | POS | FULL NAME |
|--------------|------|-----|-----|-----|-----------|
| PLAYER ABBR. | HAND | AVG |     |     |           |
| Burks        | R    | 303 | 12  | 0   | Burks     |
| Boggs        | L    | 380 | 3   | 1   | Boggs     |
| Evans        | R    | 285 | 20  | 6   | Evans     |
| Esasky       | R    | 277 | 30  | 5   | Esasky    |
| Greenwell    | L    | 308 | 14  | 9   | Greenwell |
| Reed         | R    | 288 | 3   | 6   | Reed      |
| Heep         | R    | 300 | 5   | 5   | Heep      |
| Cerone       | R    | 243 | 4   | 4   | Cerone    |
| Romine       | R    | 274 | 1   | 5   | Romine    |
| Rivera       | R    | 257 | 5   | 6   | Rivera    |
| Barrett      | R    | 256 | 1   | 6   | Barrett   |
| Rice         | R    | 234 | 3   | 6   | Rice      |
| Kutcher      | R    | 225 | 2   | 6   | Kutcher   |
| Gedman       | L    | 212 | 4   | 6   | Gedman    |

| PITCHERS     |      | ERA  | FULL NAME |
|--------------|------|------|-----------|
| PLAYER ABBR. | HAND |      |           |
| Clemens      | R    | 3.13 | Clemens   |
| Boddicker    | R    | 4.00 | Boddicker |
| Dopson       | R    | 3.99 | Dopson    |
| Smithson     | R    | 4.95 | Smithson  |
| Smith        | R    | 3.57 | Smith     |
| Stanley      | R    | 4.88 | Stanley   |
| Lamp         | R    | 2.32 | Lamp      |
| Murphy       | L    | 2.74 | Murphy    |
| Harris       | R    | 2.57 | Harris    |
| Price        | R    | 4.35 | Price     |

## (CH) CHICAGO (AMERICAN)

| BATTERS      |      | HR  | SPD | POS | FULL NAME |
|--------------|------|-----|-----|-----|-----------|
| PLAYER ABBR. | HAND | AVG |     |     |           |
| Guillen      | L    | 253 | 1   | 14  | Guillen   |
| Martinez     | R    | 300 | 5   | 6   | Martinez  |
| Fisk         | R    | 293 | 13  | 5   | Fisk      |
| Calderon     | R    | 286 | 14  | 7   | Calderon  |
| Johnson      | L    | 300 | 0   | 10  | Johnson   |
| Gallagher    | R    | 266 | 1   | 6   | Gallagher |
| Lyons        | L    | 264 | 2   | 8   | Lyons     |
| Fletcher     | R    | 253 | 1   | 6   | Fletcher  |
| Williams     | R    | 274 | 3   | 6   | Williams  |
| Kukovics     | R    | 264 | 3   | 5   | Kukovics  |
| Sosa         | R    | 257 | 4   | 7   | Sosa      |
| Boston       | L    | 252 | 5   | 7   | Boston    |
| Pasqua       | L    | 248 | 11  | 6   | Pasqua    |
| Walker       | L    | 210 | 5   | 5   | Walker    |

| PITCHERS     |      | ERA  | FULL NAME |
|--------------|------|------|-----------|
| PLAYER ABBR. | HAND |      |           |
| Perez        | R    | 5.01 | Perez     |
| King         | R    | 3.39 | King      |
| Hibbard      | L    | 3.21 | Hibbard   |
| Dotson       | R    | 4.46 | Dotson    |
| Patterson    | R    | 4.52 | Patterson |
| Hillegas     | R    | 4.74 | Hillegas  |
| Long         | R    | 3.92 | Long      |
| Pall         | R    | 3.31 | Pall      |
| Thigpen      | R    | 3.76 | Thigpen   |
| Rosenberg    | R    | 4.94 | Rosenberg |

# ★ STATISTICHE GIOCATORI

## (MT) MONTREAL

| BATTERS    |       | BATTERS |     |    |     | PITCHERS |              |            |       |      |      |            |
|------------|-------|---------|-----|----|-----|----------|--------------|------------|-------|------|------|------------|
| PLAYER     | ABBR. | HAND    | AVG | HR | SPD | POS      | FULL NAME    | PLAYER     | ABBR. | HAND | ERA  | FULL NAME  |
| Raines     | R     | R       | 285 | 9  | 16  | 0        | Raines       | DeMartino  | R     | R    | 3.16 | DeMartino  |
| Wallach    | R     | R       | 277 | 13 | 6   | 1        | Wallach      | B. Smith   | R     | R    | 2.84 | B. Smith   |
| Brooks     | R     | R       | 268 | 14 | 7   | 0        | Brooks       | Gross      | R     | R    | 4.38 | Gross      |
| Galaraga   | R     | R       | 257 | 23 | 9   | 1        | Balaraga     | Perez      | R     | R    | 3.31 | Perez      |
| D. Martnez | L     | L       | 274 | 3  | 12  | 0        | Da. Martinez | Langston   | R     | R    | 2.18 | Langston   |
| Snowveta   | R     | R       | 250 | 5  | 5   | C        | Santovenia   | Burke      | R     | R    | 2.55 | Burke      |
| Owen       | S     | S       | 233 | 6  | 6   | 1        | Owen         | Heskeith   | L     | L    | 5.77 | Heskeith   |
| Foley      | L     | L       | 229 | 7  | 5   | 1        | Foley        | Frey       | R     | R    | 5.48 | Frey       |
| W. Johnson | S     | S       | 272 | 2  | 6   | 1        | W. Johnson   | McGaffigan | R     | R    | 4.68 | McGaffigan |
| Garcia     | R     | R       | 271 | 3  | 6   | 1        | Garcia       | Z. Smith   | R     | R    | 3.49 | Z. Smith   |
| Hudler     | R     | R       | 245 | 6  | 12  | 1        | Hudler       |            |       |      |      |            |
| Fitzgrid   | R     | R       | 238 | 7  | 6   | C        | Fitzgerald   |            |       |      |      |            |
| Aldrete    | L     | L       | 221 | 1  | 5   | 0        | Aldrete      |            |       |      |      |            |
| Nixon      | S     | S       | 217 | 0  | 16  | 0        | Nixon        |            |       |      |      |            |

## (CI) CINCINNATI

| BATTERS   |       | BATTERS |     |    |     | PITCHERS |           |          |       |      |      |           |
|-----------|-------|---------|-----|----|-----|----------|-----------|----------|-------|------|------|-----------|
| PLAYER    | ABBR. | HAND    | AVG | HR | SPD | POS      | FULL NAME | PLAYER   | ABBR. | HAND | ERA  | FULL NAME |
| Larkin    | R     | R       | 342 | 4  | 9   | 1        | Larkin    | Browning | L     | L    | 3.39 | Browning  |
| O'Neill   | L     | L       | 276 | 15 | 12  | 0        | O'Neill   | Mahler   | R     | R    | 3.83 | Mahler    |
| Benzinger | R     | S       | 245 | 17 | 6   | 1        | Benzinger | Leary    | R     | R    | 3.52 | Leary     |
| Davis     | R     | R       | 281 | 34 | 12  | 0        | Davis     | Rijo     | R     | R    | 2.84 | Rijo      |
| Roomees   | R     | R       | 263 | 7  | 9   | 0        | Roomees   | Dibble   | R     | R    | 2.09 | Dibble    |
| Griffey   | R     | R       | 263 | 8  | 6   | C        | Griffey   | Charlton | L     | L    | 2.93 | Charlton  |
| Sabo      | R     | R       | 260 | 6  | 9   | 1        | Sabo      | Jackson  | L     | L    | 5.60 | Jackson   |
| Oester    | S     | S       | 246 | 1  | 4   | 1        | Oester    | Franco   | L     | L    | 3.12 | Franco    |
| Winnigham | L     | L       | 251 | 3  | 9   | 0        | Winnigham | Scudfder | R     | R    | 4.49 | Scudfder  |
| Duncan    | S     | S       | 248 | 3  | 8   | 1        | Duncan    | Birtsas  | R     | R    | 3.75 | Birtsas   |
| Quinones  | S     | S       | 244 | 12 | 5   | 1        | Quinones  |          |       |      |      |           |
| Collins   | S     | S       | 236 | 0  | 7   | 0        | Collins   |          |       |      |      |           |
| Reed      | L     | L       | 223 | 3  | 5   | C        | Reed      |          |       |      |      |           |
| Yingblood | R     | R       | 212 | 3  | 6   | 0        | Yingblood |          |       |      |      |           |

# ★ STATISTICHE GIOCATORI

## (CL) CLEVELAND

| BATTERS  |       | AVG  | HR | SPD | POS | FULL NAME |
|----------|-------|------|----|-----|-----|-----------|
| PLAYER   | ABBR. | HAND | HR | SPD | POS | FULL NAME |
| Browie   | S     | 299  | 5  | 9   | I   | Browie    |
| Jacoby   | R     | 272  | 13 | 6   | I   | Jacoby    |
| Snyder   | R     | 215  | 18 | 7   | 0   | Snyder    |
| Carter   | R     | 243  | 35 | 9   | 0   | Carter    |
| O'Brien  | L     | 259  | 12 | 6   | I   | O'Brien   |
| Fermin   | R     | 238  | 0  | 6   | I   | Fermin    |
| Clark    | L     | 237  | 8  | 5   | 0   | Clark     |
| Allanson | R     | 232  | 3  | 6   | C   | Allanson  |
| James    | R     | 306  | 4  | 6   | 0   | James     |
| Kommirsk | R     | 237  | 8  | 10  | 0   | Kommirsk  |
| Skinner  | R     | 230  | 1  | 5   | C   | Skinner   |
| Belle    | R     | 225  | 7  | 6   | I   | Belle     |
| McDowell | L     | 222  | 3  | 11  | 0   | McDowell  |
| Aguayo   | R     | 175  | 1  | 5   | I   | Aguayo    |

### PITCHERS

| PLAYER   | ABBR. | HAND | ERA      | FULL NAME |
|----------|-------|------|----------|-----------|
| Swindell | L     | 3.37 | Swindell |           |
| Candioli | R     | 3.10 | Candioli |           |
| Black    | L     | 3.36 | Black    |           |
| Farrell  | R     | 3.63 | Farrell  |           |
| D Jones  | R     | 2.34 | D. Jones |           |
| Yett     | R     | 5.00 | Yett     |           |
| Bailes   | L     | 4.28 | Bailes   |           |
| Orosco   | LS    | 2.08 | Orosco   |           |
| Olin     | R     | 3.75 | Olin     |           |
| Atherton | R     | 4.15 | Atherton |           |

## (KC) KANSAS CITY

| BATTERS   |       | AVG  | HR | SPD | POS | FULL NAME  |
|-----------|-------|------|----|-----|-----|------------|
| PLAYER    | ABBR. | HAND | HR | SPD | POS | FULL NAME  |
| Esreich   | L     | 293  | 9  | 43  | 0   | Eisenreich |
| Brett     | L     | 282  | 12 | 9   | I   | Brett      |
| Tartabull | R     | 268  | 18 | 6   | 0   | Tartabull  |
| Jackson   | R     | 256  | 32 | 13  | 0   | Jackson    |
| Stilwell  | S     | 261  | 7  | 8   | I   | Stilwell   |
| Selzer    | R     | 281  | 4  | 10  | I   | Selzer     |
| Boone     | R     | 274  | 1  | 6   | C   | Boone      |
| White     | R     | 256  | 2  | 6   | I   | White      |
| Tabler    | R     | 259  | 2  | 6   | 0   | Tabler     |
| Wilson    | S     | 253  | 3  | 12  | 0   | Wilson     |
| Wellman   | R     | 230  | 2  | 6   | I   | Wellman    |
| MacIarin  | R     | 223  | 2  | 5   | C   | MacIarine  |
| Buckner   | L     | 216  | 1  | 6   | I   | Buckner    |
| Thurman   | R     | 195  | 0  | 14  | 0   | Thurman    |

### PITCHERS

| PLAYER     | ABBR. | HAND | ERA        | FULL NAME |
|------------|-------|------|------------|-----------|
| Sabritsagh | R     | 2.16 | Saberhagen |           |
| Gubicza    | R     | 3.04 | Gubicza    |           |
| Aquino     | R     | 3.50 | Aquino     |           |
| Lebrandt   | L     | 5.14 | Lebrandt   |           |
| Gordon     | R     | 3.64 | Gordon     |           |
| Montgomy   | R     | 1.37 | Montgomery |           |
| Leach      | R     | 4.15 | Leach      |           |
| Crawford   | R     | 2.83 | Crawford   |           |
| Luecken    | R     | 3.42 | Luecken    |           |
| Farr       | R     | 4.12 | Farr       |           |

# ★ STATISTICHE GIOCATORI

## (NY) NEW YORK (NATIONAL)

| BATTERS |  | PLAYER ABBR. | HAND | AVG | HR | SPD | POS | FULL NAME    |
|---------|--|--------------|------|-----|----|-----|-----|--------------|
|         |  | McReynolds   | R    | 272 | 22 | 10  | O   | McReynolds   |
|         |  | Jeffries     | S    | 258 | 12 | 12  | I   | Jeffries     |
|         |  | Strobby      | L    | 225 | 29 | 9   | O   | Strobbery    |
|         |  | Johnson      | S    | 287 | 36 | 5   | I   | Johnson      |
|         |  | Samuel       | R    | 235 | 11 | 16  | O   | Samuel       |
|         |  | Magadan      | L    | 286 | 4  | 5   | I   | Magadan      |
|         |  | Lyons        | R    | 247 | 3  | 4   | C   | Lyons        |
|         |  | Elster       | R    | 231 | 10 | 6   | I   | Elster       |
|         |  | Carreon      | R    | 308 | 6  | 6   | O   | Carreon      |
|         |  | Sasser       | L    | 291 | 1  | 5   | C   | Sasser       |
|         |  | Teufel       | R    | 256 | 2  | 5   | I   | Teufel       |
|         |  | Hernandez    | L    | 233 | 4  | 4   | I   | K. Hernandez |
|         |  | Miller       | R    | 231 | 1  | 7   | I   | Miller       |
|         |  | Wilson       | S    | 205 | 3  | 7   | O   | Wilson       |

### PITCHERS

| PLAYER ABBR. | HAND | ERA  | FULL NAME |
|--------------|------|------|-----------|
| Fernandez    | L    | 2.83 | Fernandez |
| Cone         | R    | 3.52 | Cone      |
| Darling      | R    | 3.52 | Darling   |
| Ojeda        | L    | 3.47 | Ojeda     |
| Gooden       | R    | 2.89 | Gooden    |
| Myers        | L    | 2.35 | Myers     |
| Aguilera     | R    | 2.34 | Aguilera  |
| Musselman    | R    | 3.08 | Musselman |
| Innis        | R    | 3.18 | Innis     |
| Aase         | R    | 3.94 | Aase      |

## (HO) HOUSTON

| BATTERS |  | PLAYER ABBR. | HAND | AVG | HR | SPD | POS | FULL NAME |
|---------|--|--------------|------|-----|----|-----|-----|-----------|
|         |  | Puhl         | L    | 271 | 0  | 8   | O   | Puhl      |
|         |  | Biggio       | R    | 257 | 13 | 13  | C   | Biggio    |
|         |  | Wilson       | R    | 266 | 11 | 5   | O   | Wilson    |
|         |  | Davis        | R    | 269 | 34 | 6   | I   | Davis     |
|         |  | Caminitti    | S    | 255 | 10 | 6   | I   | Caminitti |
|         |  | Ramirez      | R    | 246 | 6  | 5   | I   | Ramirez   |
|         |  | Young        | S    | 233 | 0  | 15  | O   | Young     |
|         |  | Doran        | S    | 219 | 8  | 12  | I   | Doran     |
|         |  | Bass         | S    | 300 | 5  | 9   | O   | Bass      |
|         |  | Trevino      | R    | 290 | 2  | 5   | O   | Trevino   |
|         |  | Spillman     | R    | 278 | 0  | 6   | O   | Spillman  |
|         |  | Yelding      | R    | 233 | 0  | 10  | I   | Yelding   |
|         |  | Reynolds     | L    | 201 | 2  | 6   | I   | Reynolds  |
|         |  | Gross        | R    | 200 | 0  | 5   | C   | Gross     |

### PITCHERS

| PLAYER ABBR. | HAND | ERA  | FULL NAME |
|--------------|------|------|-----------|
| Scott        | R    | 3.10 | Scott     |
| Deshaies     | L    | 2.91 | Deshaies  |
| Portugal     | R    | 2.75 | Portugal  |
| Clancy       | R    | 5.08 | Clancy    |
| Darwin       | R    | 2.36 | Darwin    |
| Anderson     | R    | 1.54 | Anderson  |
| Agosto       | L    | 2.93 | Agosto    |
| Scatzebr     | R    | 4.45 | Scatzebr  |
| Smith        | R    | 2.64 | Smith     |
| Forsch       | R    | 5.32 | Forsch    |



# ★ STATISTICHE GIOCATORI

## (DT) DETROIT

| BATTERS      |      | BATTERS |    |     |     |             |              |      |     |    |     |     |           |
|--------------|------|---------|----|-----|-----|-------------|--------------|------|-----|----|-----|-----|-----------|
| PLAYER ABBR. | HAND | AVG     | HR | SPD | POS | FULL NAME   | PLAYER ABBR. | HAND | AVG | HR | SPD | POS | FULL NAME |
| Pettis       | S    | 257     | 1  | 16  | 0   | Pettis      | Gladden      | R    | 295 | 8  | 13  | 0   | Gladden   |
| Bergman      | L    | 268     | 7  | 5   | I   | Bergman     | Puckett      | R    | 339 | 9  | 9   | 0   | Puckett   |
| Heath        | R    | 263     | 10 | 7   | C   | Heath       | Gaetti       | R    | 251 | 19 | 8   | I   | Gaetti    |
| Whitaker     | L    | 251     | 28 | 7   | I   | Whitaker    | Hrbek        | L    | 272 | 25 | 6   | I   | Hrbek     |
| Ward         | R    | 253     | 9  | 6   | 0   | Ward        | Harper       | R    | 325 | 8  | 5   | C   | Harper    |
| Trammell     | R    | 243     | 5  | 9   | I   | Trammell    | Gagne        | R    | 272 | 9  | 9   | I   | Gagne     |
| Jones        | R    | 259     | 3  | 6   | I   | Jones       | Larkin       | S    | 267 | 6  | 7   | I   | Larkin    |
| Lynn         | L    | 241     | 11 | 5   | 0   | Lynn        | Bush         | L    | 263 | 14 | 7   | 0   | Bush      |
| Lemmon       | R    | 237     | 7  | 6   | 0   | Lemmon      | Baker        | S    | 295 | 0  | 6   | I   | Baker     |
| Nokes        | L    | 250     | 9  | 4   | C   | Nokes       | Newman       | S    | 253 | 0  | 9   | I   | Newman    |
| Schu         | R    | 214     | 7  | 5   | I   | Schu        | Moses        | S    | 281 | 1  | 9   | 0   | Moses     |
| Strange      | R    | 214     | 1  | 7   | 0   | Strange     | Castillo     | R    | 257 | 8  | 6   | 0   | Castillo  |
| K Williams   | R    | 205     | 6  | 9   | 0   | K. Williams | Backman      | S    | 231 | 1  | 5   | I   | Backman   |
| Brumley      | S    | 198     | 1  | 9   | I   | Brumley     | Laudner      | R    | 222 | 6  | 6   | C   | Laudner   |

### PITCHERS

| PLAYER ABBR. | HAND | ERA  | FULL NAME   |
|--------------|------|------|-------------|
| Tanana       | L    | 3.58 | Tanana      |
| Morris       | R    | 4.86 | Morris      |
| Alexandr     | R    | 4.44 | Alexander   |
| Robinson     | R    | 4.73 | Robinson    |
| Henneman     | R    | 3.70 | Henneman    |
| Gibson       | L    | 4.64 | Gibson      |
| Williams     | RS   | 3.64 | F. Williams |
| Nunez        | R    | 4.17 | Nunez       |
| Hraandez     | R    | 5.74 | Hernandez   |
| Havins       | L    | 5.00 | Havins      |

## (MN) MINNESOTA

| BATTERS      |      | BATTERS |    |     |     |           |              |      |      |    |     |     |           |
|--------------|------|---------|----|-----|-----|-----------|--------------|------|------|----|-----|-----|-----------|
| PLAYER ABBR. | HAND | AVG     | HR | SPD | POS | FULL NAME | PLAYER ABBR. | HAND | AVG  | HR | SPD | POS | FULL NAME |
| Gladden      | R    | 295     | 8  | 13  | 0   | Gladden   | Anderson     | L    | 3.80 |    |     |     | Anderson  |
| Puckett      | R    | 339     | 9  | 9   | 0   | Puckett   | Smith        | R    | 3.92 |    |     |     | Smith     |
| Gaetti       | R    | 251     | 19 | 8   | I   | Gaetti    | Viola        | L    | 3.79 |    |     |     | Viola     |
| Hrbek        | L    | 272     | 25 | 6   | I   | Hrbek     | Aguilera     | R    | 3.21 |    |     |     | Aguilera  |
| Harper       | R    | 325     | 8  | 5   | C   | Harper    | Berenguer    | R    | 3.48 |    |     |     | Berenguer |
| Gagne        | R    | 272     | 9  | 9   | I   | Gagne     | Reardon      | R    | 4.07 |    |     |     | Reardon   |
| Larkin       | S    | 267     | 6  | 7   | I   | Larkin    | Rawley       | L    | 5.21 |    |     |     | Rawley    |
| Bush         | L    | 263     | 14 | 7   | 0   | Bush      | Dyer         | R    | 4.82 |    |     |     | Dyer      |
| Baker        | S    | 295     | 0  | 6   | I   | Baker     | Wayne        | L    | 3.30 |    |     |     | Wayne     |
| Newman       | S    | 253     | 0  | 9   | I   | Newman    | Gonzalez     | R    | 4.66 |    |     |     | Gonzalez  |
| Moses        | S    | 281     | 1  | 9   | 0   | Moses     |              |      |      |    |     |     |           |
| Castillo     | R    | 257     | 8  | 6   | 0   | Castillo  |              |      |      |    |     |     |           |
| Backman      | S    | 231     | 1  | 5   | I   | Backman   |              |      |      |    |     |     |           |
| Laudner      | R    | 222     | 6  | 6   | C   | Laudner   |              |      |      |    |     |     |           |

### PITCHERS

| PLAYER ABBR. | HAND | ERA  | FULL NAME |
|--------------|------|------|-----------|
| Anderson     | L    | 3.80 | Anderson  |
| Smith        | R    | 3.92 | Smith     |
| Viola        | L    | 3.79 | Viola     |
| Aguilera     | R    | 3.21 | Aguilera  |
| Berenguer    | R    | 3.48 | Berenguer |
| Reardon      | R    | 4.07 | Reardon   |
| Rawley       | L    | 5.21 | Rawley    |
| Dyer         | R    | 4.82 | Dyer      |
| Wayne        | L    | 3.30 | Wayne     |
| Gonzalez     | R    | 4.66 | Gonzalez  |

# ★ STATISTICHE GIOCATORI

## (PH) PHILADELPHIA

| BATTERS |   | HR  | SPD | POS | FULL NAME |
|---------|---|-----|-----|-----|-----------|
| Dykstra | L | 237 | 14  | 0   | Dykstra   |
| Herr    | S | 287 | 2   | 9   | Herr      |
| Thon    | R | 271 | 15  | 7   | Thon      |
| V.Hayes | R | 259 | 26  | 13  | W Hayes   |
| Kruk    | L | 300 | 8   | 0   | Kruk      |
| Jordan  | R | 285 | 12  | 6   | Jordan    |
| C.Hayes | R | 257 | 8   | 6   | C. Hayes  |
| Daulton | L | 201 | 8   | 6   | Daulton   |
| Ready   | R | 264 | 8   | 6   | Ready     |
| Lake    | R | 252 | 2   | 5   | Lake      |
| Jelitz  | S | 243 | 4   | 6   | Jelitz    |
| Ford    | L | 218 | 1   | 7   | Ford      |
| Murphy  | R | 218 | 9   | 5   | Murphy    |
| Demier  | R | 171 | 1   | 6   | Demier    |

| PITCHERS   |    | ERA  | FULL NAME  |
|------------|----|------|------------|
| Howell     | R  | 3.44 | Howell     |
| Cook       | R  | 3.72 | Cook       |
| Ruffin     | L  | 4.44 | Ruffin     |
| Mulholland | R  | 4.92 | Mulholland |
| Parrett    | R  | 2.98 | Parrett    |
| McDowell   | RS | 1.96 | McDowell   |
| Harris     | R  | 3.58 | Harris     |
| Frothirth  | R  | 3.59 | Frothirth  |
| McWilliams | R  | 4.10 | McWilliams |
| Carman     | L  | 5.24 | Carman     |

## (LA) LOS ANGELES

| BATTERS  |   | HR  | SPD | POS | FULL NAME |
|----------|---|-----|-----|-----|-----------|
| Randolph | R | 282 | 2   | 7   | Randolph  |
| Gonzalez | R | 268 | 3   | 8   | Gonzalez  |
| Marshall | R | 260 | 11  | 5   | Marshall  |
| Murray   | S | 247 | 20  | 7   | Murray    |
| Hamilton | R | 245 | 12  | 4   | Hamilton  |
| Scoscia  | L | 250 | 10  | 5   | Scoscia   |
| Griffin  | S | 247 | 0   | 9   | Griffin   |
| Harris   | R | 236 | 3   | 9   | Harris    |
| Hatcher  | R | 295 | 2   | 6   | Hatcher   |
| Stubbs   | L | 291 | 4   | 6   | Stubbs    |
| Anderson | R | 229 | 1   | 6   | Anderson  |
| Gibson   | L | 213 | 9   | 9   | Gibson    |
| Shelby   | S | 183 | 1   | 10  | Shelby    |
| Dempsey  | R | 179 | 4   | 5   | Dempsey   |

| PITCHERS   |   | ERA  | FULL NAME  |
|------------|---|------|------------|
| Belcher    | R | 2.82 | Belcher    |
| Hershiser  | R | 2.31 | Hershiser  |
| Valenzuela | L | 3.43 | Valenzuela |
| Morgan     | R | 2.53 | Morgan     |
| Martinez   | R | 3.19 | Martinez   |
| Howell     | R | 1.58 | Howell     |
| Pena       | R | 2.13 | Pena       |
| Wetland    | R | 3.77 | Wetland    |
| Searge     | L | 3.53 | Searge     |
| Crews      | R | 3.21 | Crews      |

# ★ STATISTICHE GIOCATORI

## (MW) MILWAUKEE

| BATTERS      |      | AVG | HR | SPD | POS | FULL NAME |
|--------------|------|-----|----|-----|-----|-----------|
| PLAYER ABBR. | HAND | 315 | 11 | 13  | I   | Molitor   |
| Molitor      | R    | 274 | 0  | 12  | I   | Gantner   |
| Gantner      | L    | 247 | 15 | 10  | O   | Briggs    |
| Briggs       | R    | 318 | 21 | 11  | O   | Yount     |
| Yount        | R    | 265 | 12 | 6   | I   | Brock     |
| Brock        | L    | 255 | 4  | 9   | O   | Spiers    |
| Spiers       | R    | 248 | 5  | 9   | C   | Surhoff   |
| Surhoff      | L    | 247 | 5  | 8   | I   | Shelfield |
| Shelfield    | R    | 210 | 26 | 6   | O   | Deer      |
| Deer         | R    | 241 | 3  | 12  | O   | Felder    |
| Felder       | S    | 234 | 6  | 5   | C   | O'Brien   |
| O'Brien      | R    | 232 | 3  | 6   | O   | Francona  |
| Francona     | R    | 209 | 0  | 6   | I   | Romero    |
| Romero       | R    | 194 | 0  | 6   | I   | Pollidor  |
| Pollidor     | R    |     |    |     |     |           |

| PITCHERS     |      | ERA  | FULL NAME |
|--------------|------|------|-----------|
| PLAYER ABBR. | HAND | 2.95 | Bosio     |
| Bosio        | R    | 5.31 | August    |
| August       | R    | 3.46 | Higuera   |
| Higuera      | R    | 5.13 | Reuss     |
| Reuss        | R    | 2.83 | Crim      |
| Crim         | R    | 3.35 | Knudson   |
| Knudson      | R    | 3.12 | Navarro   |
| Navarro      | R    | 2.35 | Plesac    |
| Plesac       | L    | 3.54 | Fossas    |
| Fossas       | R    | 3.84 | Krueger   |
| Krueger      | R    |      |           |

## (OK) OAKLAND

| BATTERS      |      | AVG | HR | SPD | POS | FULL NAME    |
|--------------|------|-----|----|-----|-----|--------------|
| PLAYER ABBR. | HAND | 274 | 12 | 20  | O   | R. Henderson |
| R. Hndrsn    | R    | 336 | 2  | 15  | I   | Lansford     |
| Lansford     | R    | 269 | 17 | 7   | O   | Cansco       |
| Cansco       | R    | 231 | 33 | 5   | I   | McGwire      |
| McGwire      | R    | 273 | 7  | 4   | C   | Steinbach    |
| Steinbach    | R    | 264 | 22 | 3   | O   | Parker       |
| Parker       | L    | 262 | 4  | 6   | I   | Phillips     |
| Phillips     | S    | 252 | 3  | 7   | I   | Gallego      |
| Gallego      | R    | 250 | 15 | 7   | O   | D. Henderson |
| D. Hndrsn    | R    | 248 | 1  | 9   | O   | Javier       |
| Javier       | S    | 242 | 7  | 5   | I   | Phelps       |
| Phelps       | L    | 233 | 3  | 8   | I   | Weiss        |
| Weiss        | S    | 232 | 1  | 9   | I   | Blankenship  |
| Blankenship  | R    | 228 | 5  | 6   | C   | Hassey       |
| Hassey       | L    |     |    |     |     |              |

| PITCHERS     |      | ERA  | FULL NAME |
|--------------|------|------|-----------|
| PLAYER ABBR. | HAND | 3.32 | Stewart   |
| Stewart      | R    | 2.61 | Moore     |
| Moore        | R    | 4.36 | Davis     |
| Davis        | R    | 3.00 | Weich     |
| Weich        | R    | 2.24 | Burns     |
| Burns        | R    | 1.56 | Eckersly  |
| Eckersly     | RS   | 3.73 | C. Young  |
| C. Young     | L    | 3.26 | Nelson    |
| Nelson       | R    | 2.35 | Honeycut  |
| Honeycut     | L    | 1.88 | Corsi     |
| Corsi        | R    |      |           |

# ★ STATISTICHE GIOCATORI

## (PI) PITTSBURGH

| BATTERS | PLAYER ABBR. | HAND | AVG | HR | SPD | POS | FULL NAME |
|---------|--------------|------|-----|----|-----|-----|-----------|
|         | Reynolds     | S    | 270 | 6  | 12  | 0   | Reynolds  |
|         | Bell         | R    | 258 | 2  | 6   | 1   | Bell      |
|         | Bonds        | L    | 248 | 19 | 14  | 0   | Bonds     |
|         | Bonilla      | S    | 281 | 24 | 8   | 1   | Bonilla   |
|         | Van Slyk     | L    | 237 | 9  | 10  | 0   | Van Slyke |
|         | Lind         | R    | 232 | 2  | 10  | 1   | Lind      |
|         | Hatcher      | R    | 231 | 4  | 12  | 1   | Hatcher   |
|         | Ortiz        | R    | 217 | 1  | 4   | C   | Ortiz     |
|         | LaValier     | L    | 316 | 2  | 6   | C   | LaValier  |
|         | Restus       | R    | 283 | 6  | 13  | 0   | Restus    |
|         | Dstefano     | L    | 247 | 2  | 4   | 1   | Dstefano  |
|         | Cangelosi    | S    | 219 | 0  | 10  | 0   | Cangelosi |
|         | Quinones     | S    | 209 | 3  | 5   | 1   | Quinones  |
|         | King         | R    | 195 | 5  | 6   | 1   | King      |

### PITCHERS

| PLAYER ABBR. | HAND | ERA  | FULL NAME |
|--------------|------|------|-----------|
| Drabek       | R    | 2.80 | Drabek    |
| Smiley       | L    | 2.81 | Smiley    |
| Walk         | R    | 4.41 | Walk      |
| Robinson     | R    | 4.58 | Robinson  |
| Heaton       | R    | 3.05 | Heaton    |
| Kramer       | R    | 3.96 | Kramer    |
| Kipper       | R    | 2.93 | Kipper    |
| Landrum      | L    | 1.67 | Landrum   |
| Bair         | R    | 2.27 | Bair      |
| Reed         | R    | 5.60 | Reed      |

## (SD) SAN DIEGO

| BATTERS | PLAYER ABBR. | HAND | AVG | HR | SPD | POS | FULL NAME  |
|---------|--------------|------|-----|----|-----|-----|------------|
|         | Gwynn        | L    | 336 | 4  | 16  | 0   | Gwynn      |
|         | Roberts      | S    | 301 | 3  | 12  | 1   | Roberts    |
|         | Santiago     | R    | 236 | 16 | 9   | C   | Santiago   |
|         | J Clark      | R    | 242 | 26 | 7   | 1   | Ja. Clark  |
|         | R Alomar     | S    | 295 | 7  | 16  | 1   | R. Alomar  |
|         | Templeton    | S    | 255 | 6  | 5   | 1   | Templeton  |
|         | James        | L    | 243 | 13 | 6   | 0   | James      |
|         | Martinez     | R    | 221 | 6  | 4   | 0   | Martinez   |
|         | Flannery     | L    | 231 | 0  | 6   | 1   | Flannery   |
|         | Jackson      | R    | 218 | 4  | 6   | 0   | Jackson    |
|         | Pajarulo     | R    | 196 | 3  | 6   | 1   | Pagliarulo |
|         | Nelson       | L    | 195 | 3  | 6   | 1   | Nelson     |
|         | Parent       | R    | 191 | 7  | 6   | C   | Parent     |
|         | Abner        | R    | 176 | 2  | 6   | 0   | Abner      |

### PITCHERS

| PLAYER ABBR. | HAND | ERA  | FULL NAME |
|--------------|------|------|-----------|
| Whitson      | R    | 2.66 | Whitson   |
| Hurst        | L    | 2.69 | Hurst     |
| Rasmussen    | L    | 4.26 | Rasmussen |
| Terrell      | R    | 4.01 | Terrell   |
| Grant        | R    | 3.33 | Grant     |
| Harris       | R    | 2.60 | Harris    |
| M Davis      | L    | 1.85 | M. Davis  |
| Show         | R    | 4.23 | Show      |
| Schraldi     | R    | 3.51 | Schraldi  |
| Benes        | R    | 3.51 | Benes     |

# ★ STATISTICHE GIOCATORI

## (SE) SEATTLE

| BATTERS | PLAYER ABBR. | HAND | AVG | HR | SPD | POS | FULL NAME |
|---------|--------------|------|-----|----|-----|-----|-----------|
|         | Reynolds     | S    | 300 | 0  | 13  | I   | Reynolds  |
|         | Griffey      | R    | 264 | 16 | 10  | I   | Griffey   |
|         | Davis        | L    | 305 | 21 | 5   | I   | Davis     |
|         | Leonard      | R    | 254 | 24 | 6   | O   | Leonard   |
|         | Buhrer       | R    | 275 | 9  | 6   | O   | Buhrer    |
|         | Bradley      | L    | 274 | 3  | 6   | C   | Bradley   |
|         | Presley      | L    | 266 | 13 | 9   | O   | Briely    |
|         | Coles        | R    | 236 | 12 | 4   | I   | Presley   |
|         | Cotto        | R    | 252 | 10 | 7   | O   | Coles     |
|         | Martinez     | R    | 264 | 9  | 9   | O   | Cotto     |
|         | Valle        | R    | 237 | 7  | 6   | C   | Martinez  |
|         | Cochrane     | R    | 235 | 3  | 5   | I   | Valle     |
|         | Vizquel      | R    | 220 | 1  | 5   | O   | Cochrane  |

### PITCHERS

| PLAYER ABBR. | HAND | ERA  | FULL NAME |
|--------------|------|------|-----------|
| Bankhead     | R    | 3.34 | Bankhead  |
| Harrison     | R    | 3.18 | Harrison  |
| Holman       | R    | 3.44 | Holman    |
| Johnson      | R    | 4.40 | Johnson   |
| Swift        | R    | 4.43 | Swift     |
| Reed         | R    | 3.19 | Reed      |
| Jackson      | R    | 3.17 | Jackson   |
| Powell       | L    | 5.00 | Powell    |
| Scholler     | R    | 2.81 | Scholler  |
| Trout        | L    | 6.60 | Trout     |

## (SL) ST. LOUIS

| BATTERS | PLAYER ABBR. | HAND | AVG | HR | SPD | POS | FULL NAME |
|---------|--------------|------|-----|----|-----|-----|-----------|
|         | Thompson     | L    | 280 | 4  | 13  | O   | Thompson  |
|         | Guerrero     | R    | 311 | 17 | 4   | I   | Guerrero  |
|         | Pardielin    | S    | 264 | 13 | 8   | I   | Pardielin |
|         | Braunsky     | R    | 239 | 20 | 6   | O   | Braunsky  |
|         | Oquendo      | S    | 291 | 1  | 6   | I   | Oquendo   |
|         | Smith        | S    | 273 | 2  | 13  | I   | Smith     |
|         | Pena         | R    | 259 | 4  | 6   | C   | Pena      |
|         | Coleman      | S    | 254 | 2  | 19  | O   | Coleman   |
|         | Walling      | L    | 304 | 1  | 4   | O   | Walling   |
|         | Jones        | L    | 293 | 0  | 5   | I   | Jones     |
|         | Morris       | L    | 239 | 2  | 5   | O   | Morris    |
|         | McGee        | S    | 236 | 3  | 8   | O   | McGee     |
|         | Pagnozzi     | R    | 150 | 0  | 6   | C   | Pagnozzi  |
|         | Lindeman     | R    | 111 | 0  | 6   | O   | Lindeman  |

### PITCHERS

| PLAYER ABBR. | HAND | ERA  | FULL NAME   |
|--------------|------|------|-------------|
| Magrane      | L    | 2.91 | Magrane     |
| DeLeon       | R    | 3.05 | DeLeon      |
| Terry        | R    | 3.57 | Terry       |
| Hill         | R    | 3.80 | Hill        |
| Dipino       | L    | 2.45 | Dipino      |
| Quisenberry  | RS   | 2.64 | Quisenberry |
| Dayley       | L    | 2.87 | Dayley      |
| Costello     | R    | 3.32 | Costello    |
| Carpenter    | R    | 3.18 | Carpenter   |
| Worrell      | R    | 2.96 | Worrell     |

# ★ STATISTICHE GIOCATORI

## (SF) SAN FRANCISCO

| BATTERS |           | PLAYER ABBR. | HAND | AVG | HR | SPD | POS       | FULL NAME |
|---------|-----------|--------------|------|-----|----|-----|-----------|-----------|
|         | Butler    | L            | 283  | 4   | 14 | 0   | Butler    |           |
|         | Thompson  | R            | 241  | 13  | 9  | 1   | Thompson  |           |
|         | Clark     | L            | 333  | 23  | 8  | 1   | Clark     |           |
|         | Mitchell  | R            | 291  | 47  | 6  | 0   | Mitchell  |           |
|         | Williams  | R            | 202  | 18  | 5  | 1   | Williams  |           |
|         | Riles     | L            | 278  | 7   | 6  | 1   | Riles     |           |
|         | Kennedy   | L            | 239  | 5   | 5  | 0   | Kennedy   |           |
|         | Mittonado | R            | 217  | 9   | 6  | 0   | Mittonado |           |
|         | Oberkiel  | L            | 269  | 2   | 5  | 1   | Oberkiel  |           |
|         | Nixon     | R            | 265  | 1   | 9  | 0   | Nixon     |           |
|         | Lifton    | R            | 252  | 4   | 6  | 1   | Lifton    |           |
|         | Uribe     | S            | 221  | 1   | 7  | 1   | Uribe     |           |
|         | Minwaring | R            | 210  | 0   | 6  | 0   | Minwaring |           |
|         | Sheridan  | L            | 205  | 3   | 7  | 0   | Sheridan  |           |

### PITCHERS

| PLAYER ABBR. | HAND | ERA  | FULL NAME |
|--------------|------|------|-----------|
| Reuschel     | R    | 2.94 | Reuschel  |
| Garrells     | R    | 2.28 | Garrells  |
| Robinson     | R    | 3.43 | Robinson  |
| Knepper      | R    | 5.13 | Knepper   |
| Lacoss       | R    | 3.17 | Lacoss    |
| Branley      | R    | 4.07 | Branley   |
| Hammer       | L    | 3.76 | Hammer    |
| Bdrosian     | RS   | 2.87 | Bdrosian  |
| Dravecky     | L    | 3.46 | Dravecky  |
| Lefterts     | LS   | 2.69 | Lefterts  |

## (TO) TORONTO

| BATTERS |           | PLAYER ABBR. | HAND | AVG | HR | SPD | POS       | FULL NAME |
|---------|-----------|--------------|------|-----|----|-----|-----------|-----------|
|         | Liriano   | S            | 263  | 5   | 10 | 1   | Liriano   |           |
|         | Gruber    | R            | 290  | 18  | 9  | 1   | Gruber    |           |
|         | Bell      | R            | 287  | 18  | 6  | 0   | Bell      |           |
|         | McGriff   | L            | 269  | 36  | 7  | 1   | McGriff   |           |
|         | Whitt     | L            | 262  | 11  | 6  | 0   | Whitt     |           |
|         | Felix     | S            | 258  | 9   | 11 | 0   | Felix     |           |
|         | Fernandez | S            | 257  | 11  | 12 | 1   | Fernandez |           |
|         | Moseby    | L            | 221  | 11  | 12 | 0   | Moseby    |           |
|         | Wilson    | R            | 298  | 2   | 9  | 0   | Wilson    |           |
|         | Lee       | S            | 260  | 3   | 6  | 1   | Lee       |           |
|         | Borders   | R            | 257  | 3   | 5  | 0   | Borders   |           |
|         | Mulliniks | L            | 238  | 3   | 5  | 1   | Mulliniks |           |
|         | Lawless   | R            | 229  | 0   | 10 | 0   | Lawless   |           |
|         | Brenly    | R            | 170  | 1   | 6  | 0   | Brenly    |           |

### PITCHERS

| PLAYER ABBR. | HAND | ERA  | FULL NAME |
|--------------|------|------|-----------|
| Siebh        | R    | 3.35 | Siebh     |
| Key          | L    | 3.88 | Key       |
| Cenutti      | L    | 3.07 | Cenutti   |
| Flanagan     | L    | 3.93 | Flanagan  |
| Henke        | R    | 1.92 | Henke     |
| Wells        | L    | 2.40 | Wells     |
| Willis       | R    | 3.66 | Willis    |
| Stollmyre    | R    | 3.88 | Stollmyre |
| Ward         | R    | 3.77 | Ward      |
| Castillo     | L    | 6.11 | Castillo  |

# ★ STATISTICHE GIOCATORI

## (TX) TEXAS

| BATTERS      |      | AVG | HR | SPD | POS | FULL NAME  |
|--------------|------|-----|----|-----|-----|------------|
| PLAYER ABBR. | HAND |     |    |     |     |            |
| Espy         | S    | 257 | 3  | 16  | 0   | Espy       |
| Franco       | R    | 316 | 13 | 12  | 1   | Franco     |
| Baines       | L    | 309 | 16 | 4   | 0   | Baines     |
| Sierra       | S    | 306 | 29 | 8   | 0   | Sierra     |
| Incavigli    | R    | 236 | 21 | 7   | 0   | Incaviglia |
| Buechele     | R    | 235 | 16 | 5   | 1   | Buechele   |
| Palmeiro     | L    | 275 | 8  | 6   | 1   | Palmeiro   |
| Petralli     | L    | 304 | 4  | 5   | C   | Petralli   |
| Manrique     | L    | 275 | 4  | 6   | 1   | Manrique   |
| Leach        | R    | 272 | 1  | 6   | 1   | Leach      |
| Kunkel       | R    | 270 | 8  | 6   | 1   | Kunkel     |
| Stanley      | R    | 246 | 1  | 6   | 0   | Stanley    |
| Sundberg     | R    | 197 | 2  | 6   | 0   | Sundberg   |
| Kreuter      | S    | 152 | 5  | 6   | C   | Kreuter    |

| PITCHERS     |      | ERA  | FULL NAME |
|--------------|------|------|-----------|
| PLAYER ABBR. | HAND |      |           |
| Ryan         | R    | 3.20 | Ryan      |
| Brown        | R    | 3.35 | Brown     |
| Witt         | R    | 5.14 | Witt      |
| Jeffcoat     | R    | 3.58 | Jeffcoat  |
| Hough        | R    | 4.35 | Hough     |
| Russell      | R    | 1.98 | Russell   |
| Guante       | R    | 3.91 | Guante    |
| Rogers       | R    | 2.93 | Rogers    |
| Hall         | L    | 3.70 | Hall      |
| Mielke       | R    | 3.26 | Mielke    |

## (NA) NATIONAL ALL STARS

| BATTERS      |      | AVG | HR | SPD | POS | FULL NAME |
|--------------|------|-----|----|-----|-----|-----------|
| PLAYER ABBR. | HAND |     |    |     |     |           |
| Smith        | S    | 273 | 2  | 13  | 1   | Smith     |
| Gwynn        | L    | 336 | 4  | 16  | 0   | Gwynn     |
| Clark        | L    | 333 | 23 | 8   | 1   | Clark     |
| Mitchell     | R    | 291 | 47 | 6   | 0   | Mitchell  |
| E Davis      | R    | 281 | 34 | 12  | 0   | E. Davis  |
| Johnson      | S    | 287 | 36 | 5   | 1   | Johnson   |
| Sundberg     | R    | 290 | 30 | 10  | 1   | Sundberg  |
| Santiago     | R    | 236 | 16 | 9   | C   | Santiago  |
| Guarro       | R    | 311 | 17 | 4   | 1   | Guerrero  |
| Bonilla      | S    | 281 | 24 | 8   | 1   | Bonilla   |
| G Davis      | R    | 269 | 34 | 6   | 1   | G. Davis  |
| V Hayes      | L    | 259 | 26 | 13  | 0   | V Hayes   |
| Pena         | R    | 259 | 4  | 6   | C   | Pena      |
| Dawson       | R    | 252 | 21 | 7   | 0   | Dawson    |

| PITCHERS     |      | ERA  | FULL NAME |
|--------------|------|------|-----------|
| PLAYER ABBR. | HAND |      |           |
| Smoltz       | R    | 2.94 | Smoltz    |
| Sutcliffe    | R    | 3.66 | Sutcliffe |
| Reuschel     | R    | 2.94 | Reuschel  |
| Hrshiser     | R    | 2.31 | Hershiser |
| Williams     | L    | 2.76 | Williams  |
| Franco       | L    | 3.12 | Franco    |
| Howell       | R    | 1.58 | Howell    |
| Landrum      | R    | 1.67 | Landrum   |
| M Davis      | L    | 1.85 | M. Davis  |
| Burke        | R    | 2.55 | Burke     |

# ★ STATISTICHE GIOCATORI

## (AM) AMERICAN ALL STARS

| BATTERS |  | PLAYER ABBR. | HAND | AVG | HR | SPD | POS | FULL NAME |
|---------|--|--------------|------|-----|----|-----|-----|-----------|
|         |  | Jackson      | R    | 256 | 32 | 13  | 0   | Jackson   |
|         |  | Boggs        | R    | 330 | 3  | 6   | 1   | Boggs     |
|         |  | Puckett      | R    | 339 | 9  | 9   | 0   | Puckett   |
|         |  | Sierra       | S    | 306 | 29 | 8   | 0   | Sierra    |
|         |  | Franco       | R    | 316 | 13 | 12  | 1   | Franco    |
|         |  | C Ripken     | R    | 257 | 21 | 5   | 1   | C. Ripken |
|         |  | McGwire      | R    | 231 | 33 | 5   | 1   | McGwire   |
|         |  | Sternbach    | R    | 273 | 7  | 4   | C   | Sternbach |
|         |  | Baines       | L    | 309 | 16 | 4   | 0   | Baines    |
|         |  | Sax          | R    | 315 | 5  | 16  | 1   | Sax       |
|         |  | Matingly     | L    | 303 | 23 | 6   | 1   | Matingly  |
|         |  | Tefflon      | S    | 258 | 26 | 6   | C   | Tefflon   |
|         |  | Leonard      | R    | 254 | 24 | 6   | 0   | Leonard   |
|         |  | Gaetti       | R    | 251 | 19 | 8   | 1   | Gaetti    |

### PITCHERS

| PLAYER ABBR. | HAND | ERA  | FULL NAME |
|--------------|------|------|-----------|
| Swindell     | L    | 3.37 | Swindell  |
| Ryan         | R    | 3.20 | Ryan      |
| Finley       | L    | 2.57 | Finley    |
| Gubicza      | R    | 3.04 | Gubicza   |
| Stewart      | R    | 3.32 | Stewart   |
| Moore        | R    | 2.61 | Moore     |
| Henneman     | R    | 3.70 | Henneman  |
| D.Jones      | R    | 2.34 | D. Jones  |
| Plesac       | L    | 2.35 | Plesac    |
| Russell      | R    | 1.98 | Russell   |

## (NY) NEW YORK (AMERICAN)

| BATTERS |  | PLAYER ABBR. | HAND | AVG | HR | SPD | POS | FULL NAME  |
|---------|--|--------------|------|-----|----|-----|-----|------------|
|         |  | Sax          | R    | 315 | 5  | 16  | 1   | Sax        |
|         |  | Kelly        | R    | 302 | 9  | 14  | 0   | Kelly      |
|         |  | Barfield     | R    | 234 | 23 | 7   | 0   | Barfield   |
|         |  | Matingly     | L    | 303 | 23 | 6   | 1   | Matingly   |
|         |  | Polonia      | L    | 300 | 3  | 12  | 0   | Polonia    |
|         |  | Espinosa     | R    | 262 | 0  | 6   | 1   | Espinosa   |
|         |  | Hall         | R    | 260 | 17 | 4   | 0   | Hall       |
|         |  | Slaughter    | R    | 251 | 5  | 5   | C   | Slaughter  |
|         |  | Balboni      | R    | 237 | 17 | 5   | 1   | Balboni    |
|         |  | Velarde      | R    | 340 | 2  | 6   | 1   | Velarde    |
|         |  | Gerem        | R    | 288 | 9  | 5   | C   | Gerem      |
|         |  | Brooks       | R    | 226 | 4  | 6   | 1   | Brooks     |
|         |  | Pagliarulo   | L    | 197 | 4  | 5   | 1   | Pagliarulo |
|         |  | Tollerson    | R    | 164 | 1  | 7   | 0   | Tollerson  |

### PITCHERS

| PLAYER ABBR. | HAND | ERA  | FULL NAME |
|--------------|------|------|-----------|
| Hawkins      | R    | 4.80 | Hawkins   |
| Cary         | R    | 3.26 | Cary      |
| Parker       | R    | 3.68 | Parker    |
| Lapoint      | L    | 5.62 | Lapoint   |
| Plunk        | R    | 3.28 | Plunk     |
| Guettman     | L    | 2.45 | Guettman  |
| Cadaret      | R    | 4.05 | Cadaret   |
| Terrell      | R    | 4.01 | Terrell   |
| McCullers    | R    | 4.57 | McCullers |
| Rignetti     | L    | 3.00 | Rignetti  |







**LE PIRATAGE  
C'EST DU VOL**

**AVIS DE COPYRIGHT**

Ce programme est protégé par la législation applicable en matière de copyright et ne peut pas être reproduit pour une copie de sauvegarde, tout ou en partie ou mis en circulation sans le consentement du détenteur du copyright.

Toutes informations relatives au piratage peuvent être obtenues à The Federation Against Software Theft via 02028 860277.



**LE PIRATAGE  
C'EST DU VOL**

**AVERTISSEMENT**

C'est un crime puni par la loi que de vendre, louer, offrir ou exposer pour la vente ou la location, ou distribuer autrement des copies en contrefaçon (illegales) de ce programme informatique et les personnes commettant ce délit seront poursuivies en justice.

Toutes informations relatives au piratage peuvent être obtenues à The Federation Against Software Theft via 02028 860277.



**PIRACY  
IS THEFT**

**COPYRIGHT NOTICE**

This program is protected under UK copyright law and may not be copied, back-up, hired or reproduced or otherwise modified without the consent of the copyright owner.

Any information of piracy should be passed to The Federation Against Software Theft, 02028 860277.



**RAUKOPIEREN  
IST DIEBSTAHL**

**COPYRIGHT-HINWEIS**

Dieses Programm ist urheberrechtlich geschützt (nach englischer geltender Recht) und darf weder kopiert, nachgemacht oder anderweitig reproduziert werden, es sei denn die Zustimmung des Copyright-Inhabers erfolgt schriftlich.

Alle einschlägigen Informationen über Raubkopieren können bei FEDERATION AGAINST SOFTWARE THEFT unter der Nummer 02028 860277 erfragt.



**RAUKOPIEREN  
IST DIEBSTAHL**

**ACHTUNG!**

Es handelt sich um eine kriminelle Handlung, sich dieses Produkt verkauft, anzuhelfen oder in sonstiger Weise anderen davon in Besitz zu verschaffen. Dies gilt insbesondere für Raubkopierer. Man könnte noch nicht weiß, Derartige, die Raubkopierer anrufen, unterstützen und weiterverkaufen sind strafbar.

Informationen und Anzeigen zum Thema Raubkopieren können bei FEDERATION AGAINST SOFTWARE THEFT unter der Nummer 02028 860277 erfragt.



**PIRACY  
IS THEFT**

**WARNING**

It is a criminal offence to sell, hire, offer or expose for sale, or hire or otherwise distribute infringing (illegal) copies of this computer program and persons found doing so will be prosecuted.

Any information of piracy should be passed to The Federation Against Software Theft, 02028 860277.